

LEGEND

- Cx STEEL COLUMN OVER
- Cx (u) STEEL COLUMN UNDER
- Cx (u,o) STEEL COLUMN UNDER AND OVER
- RBx / Lx ROOF BEAM / LINTEL OVER
- RBx(u) / Lx(u) ROOF BEAM / LINTEL UNDER

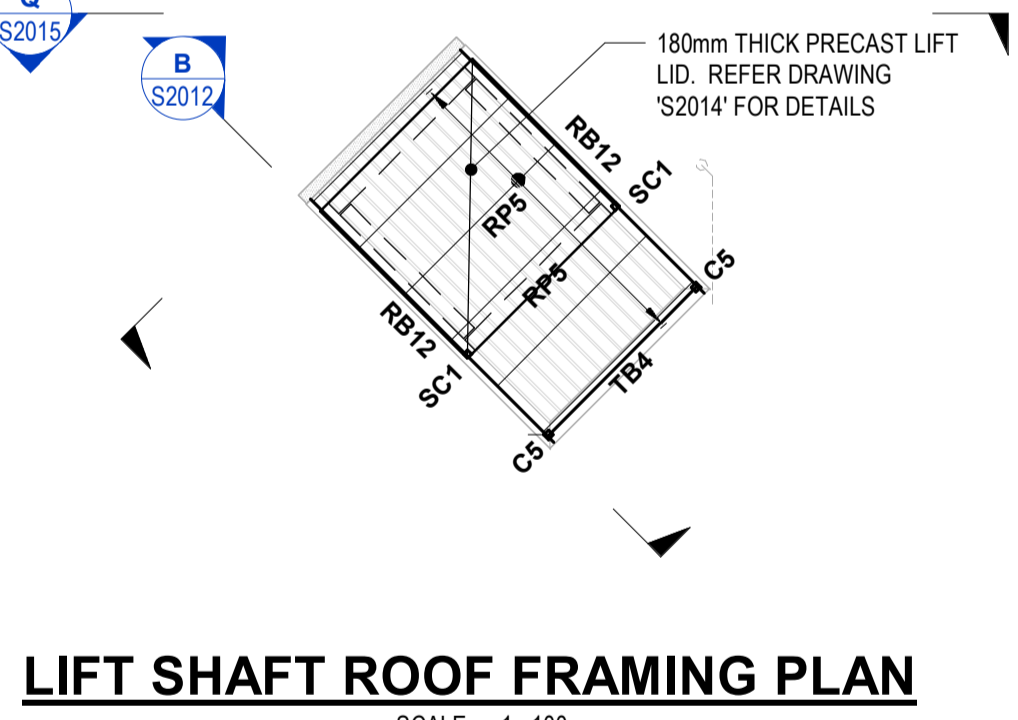
REFER TO DRAWING 'S2011' FOR MEMBER SCHEDULE

NOTE: ROOF FALL ARREST ANCHOR POINTS AND ACCESS LADDERS BETWEEN ADJOINING ROOFS SHALL BE PROVIDED. REFER TO ARCHITECTURAL DOCUMENTS FOR DETAILS. THE CONTRACTOR SHALL PROVIDE ADDITIONAL FRAMING AS REQUIRED FOR FIXING AND SUPPORT OF THESE ELEMENTS

WALL TYPE LEGEND

- WT1 200mm THICK PRECAST CONCRETE REFER WALL TYPE SCHEDULE ON DRAWING 'S2011'
- WT2 160mm THICK PRECAST CONCRETE REFER WALL TYPE SCHEDULE ON DRAWING 'S2011'
- WT3 140mm THICK REINFORCED BLOCKWORK REFER WALL TYPE SCHEDULE ON DRAWING 'S2011'
- WT4 250mm THICK PRECAST CONCRETE REFER WALL TYPE SCHEDULE ON DRAWING 'S2011'

NOTE: SOLAR PANELS AND SUPPORT FRAMES TO BE BY OTHERS AND INSTALLED IN ACCORDANCE WITH THE MANUFACTURERS INSTRUCTIONS



200mm THICK RC SLAB
N40 CONCRETE
N16-200 TOP AND BOTTOM PRIMARY DIRECTION
N12-200 SECONDARY DIRECTION
25mm COVER
REFER TO DRAWING 'S2027' FOR CONNECTION DETAILS TO THE PRECAST LIFT SHAFT

ROOF FRAMING PLAN
SCALE: 1:100

REV	DATE	REVISION DESCRIPTION	DRAWN	CHECKED	APPROVED
A	09/08/2024	PRELIMINARY ISSUE	HB	TL	TL
B	16/08/2024	PRELIMINARY ISSUE	HB	TL	TL
C	22/08/2024	PRELIMINARY ISSUE	HB	TL	TL
D	28/08/2024	PRELIMINARY ISSUE	HB	TL	TL
E	06/09/2024	PRELIMINARY ISSUE	HB	TL	TL
F	12/09/2024	TENDER ISSUE	HB	TL	TL

ds architects
DS Architects Pty Ltd
ABN 59 005 204 679
1/96 Camberwell Road
Hawthorn East Victoria 3123
T: (03) 9818 3555
www.dsarch.com.au

creo STRUCTURES
Level 7, 176 Wellington Parade
East Melbourne, VIC, Australia 3002
Ph: (03) 9417 7393

PROJECT
WODONGA TAFE LOGICAL INNOVATIONS - CLIENT HUB
45 ALBERTSON ROAD
BARNAWARtha NORTH, VICTORIA 3691

DRAWING TITLE
ROOF FRAMING PLAN

STATUS
ISSUED FOR TENDER
NOT FOR CONSTRUCTION

SCALE AT A1 1:100	DRAWN H BYRNES	DESIGNED L BRAIN
PROJECT ENGINEER T LEACH	PROJECT MANAGER A P SPENCER	DATE FIRST ISSUE 09/08/2024
PROJECT No. 230453	DRAWING No. S2010	REVISION F