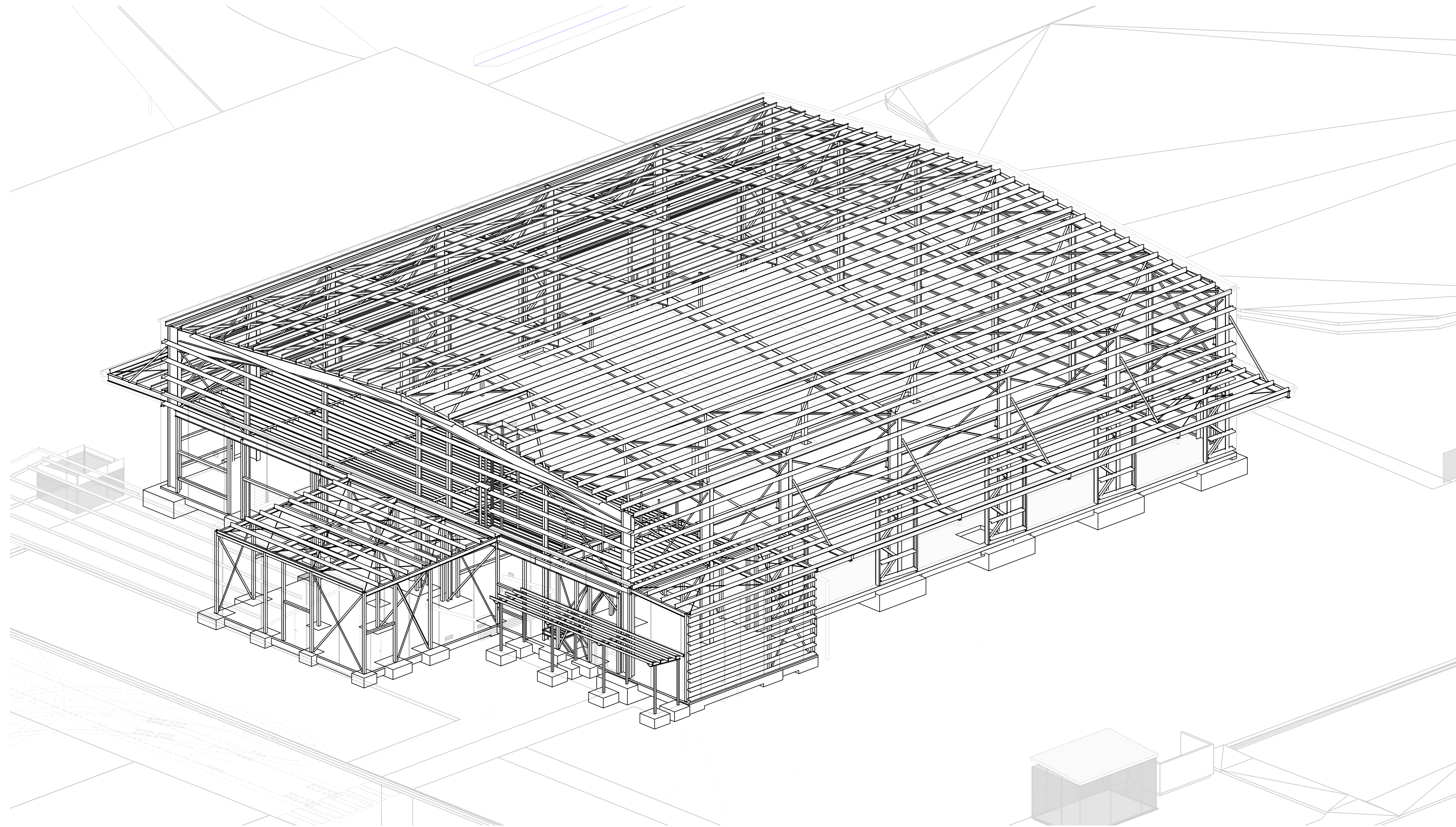


WODONGA TAFE LOGICAL INNOVATIONS
45 ALBERTSON ROAD, BARNAWARTHA NORTH, VIC 3691
STRUCTURAL DRAWINGS



| REV | DATE | REVISION DESCRIPTION | DRAWN | CHECKED | APPROVED |
|-----|----------|----------------------|-------|---------|----------|
| A | 23/05/24 | PRELIMINARY ISSUE | JL | TL | TL |
| B | 06/09/24 | PRELIMINARY ISSUE | JL | TL | TL |
| C | 12/09/24 | TENDER ISSUE | A | TL | TL |
| D | 26/09/24 | TENDER ISSUE | HB | TL | TL |

| | |
|--------|--|
| CLIENT | <p>ds architects</p> <p>DS Architects Pty Ltd ABN 59 005 204 679 170C Cambridge Road Hawthorn East Victoria 3123 T: (03) 9418 9555 www.dsarch.com.au</p> |
|--------|--|



| | |
|---------|---|
| PROJECT | <p>WODONGA TAFE LOGICAL INNOVATIONS 45 ALBERTSON ROAD, BARNAWARTHA NORTH, VIC 3691</p> |
|---------|---|

| | |
|---------------|--|
| DRAWING TITLE | <p>HEAVY VEHICLE WORKSHOP COVER SHEET</p> |
|---------------|--|

| | |
|--------|--|
| STATUS | <p>ISSUED FOR TENDER NOT FOR CONSTRUCTION</p> |
|--------|--|

| | | | | | |
|------------------|----------------------|-----------------|---------------------|------------------|-----------------|
| SCALE AT | <p>A1</p> | DRAWN | <p>JL</p> | DESIGNED | <p>TL</p> |
| PROJECT ENGINEER | <p>TL</p> | PROJECT MANAGER | <p>APS</p> | DATE FIRST ISSUE | <p>-</p> |
| PROJECT No. | <p>230453</p> | DRAWING No. | <p>S0000</p> | REVISION | <p>D</p> |