

# NEW WAREHOUSE

## 36 PLATINUM COURT THRUGOONA NSW 2640

### ELECTRICAL SERVICES

DRAWING SCHEDULE:	
NUMBER	TITLE
E000	COVERSHEET, LEGENDS AND DRAWING LIST
E001	ELECTRICAL SPECIFICATIONS
E002	SITE PLAN
E100	LEVEL G FLOOR PLAN POWER AND COMMUNICATIONS LAYOUT
E101	LEVEL M FLOOR PLAN POWER AND COMMUNICATIONS LAYOUT
E200	LEVEL G FLOOR PLAN LIGHTING LAYOUT
E201	LEVEL M FLOOR PLAN LIGHTING LAYOUT
E300	ELECTRICAL SCHEMATIC

#### EMERGENCY LUMINAIRES

EM1	CLEVERTRONICS RECESSED NON-MAINTAINED ECONOMY LITHIUM LIFE LIGHT. AS2293 CLASSIFICATION; C0=D40; C90=D40
EM2	CLEVERTRONICS SURFACE MOUNTED NON-MAINTAINED ECONOMY LITHIUM LIFE LIGHT. AS2293 CLASSIFICATION; C0=D40; C90=D40
EX1	CLEVERTRONICS MAINTAINED ECONOMY LITHIUM CLEVERFIT EXIT. AS2293 CLASSIFICATION C0=E2 C90=E2. VIEWING DISTANCE 24m. EXIT SIGNS NOT TO BE MOUNTED MORE THAN 2.7m ABOVE FLOOR LEVEL AS PER AS2293. ALLOW TO PROVIDE ALL REQUIRED SUSPENSION ACCESSORIES.
EX1	SAME AS ABOVE SPECIFICATION. DOUBLE SIDED DIRECTIONAL EXIT LIGHT.
EXJ	CLEVERTRONICS MAINTAINED SURFACE MOUNT JUMBO EXIT LIGHT. VIEWING DISTANCE 40m. AS2293 CLASSIFICATION C0 = D6.3, C90 = E3.2. EXIT SIGNS NOT TO BE MOUNTED MORE THAN 2.7m ABOVE FLOOR LEVEL AS PER AS2293. ALLOW TO PROVIDE ALL SUSPENSION ACCESSORIES / UNISTRUT SUPPORTS AS REQUIRED. PROVIDE DIRECTIONAL SIGNAGE AS INDICATED

#### LUMINAIRES

D1	15W DOWNLIGHT RECESSED FIXED, POWDER COATED WHITE. 4000K, IP44, 1163lm. THORN LIGHTING - BASE PRO / BASE PRO OR APPROVED EQUAL
R1	31W ULTRA SLIM RECESSED LED MODULAR LUMINAIRE. 4000K, IP40, 3636lm. THORN LIGHTING - ROYAL PRO LED3500-940 OR APPROVED EQUAL
S1	26W LINEAR, WATER RESISTANT LED LUMINAIRE, 4000K, IP65, 2777lm. THORN LIGHTING - WEATHER FORCE OR APPROVED EQUAL
HB1	110W LED HIGH BAY LUMINAIRE WITH WIDE BEAM OPTIC, 4000K, IP65, 20002lm. THORN LIGHTING - HIPAK GEN4 M LED2 OR APPROVED EQUAL
FL1	120W HIGH POWER LED FLOODLIGHT ASYMMETRIC LIGHT, 4000K, IP66, 15027lm. THORN LIGHTING - LEO FLEX IP66 120W OR APPROVED EQUAL
PL1	51.1W LED ROAD LIGHTING LANTERN WITH EXTRA WIDE ROAD OPTIC, 4000K, IP66, 7751lm. THORN LIGHTING - ISARO PRO OR APPROVED EQUAL

#### LIGHTING CONTROL

#B	LIGHT SWITCH - PUSH BUTTON SWITCH WHITE COLOUR. #B; DENOTES NUMBER OF BUTTONS ON SWITCH PLATE
	INFRA RED / MOTION SENSOR - SURFACE MOUNTED
	MOTION SENSOR, MICROWAVE TYPE, 120° DETECTION PATTERN, WALL MOUNTED, AUTOMATION OR EQUAL. PROGRAM TIME OUT TO 15min.
SM	MOTION SENSOR, PIR TYPE, 360° DETECTION PATTERN; AUTOMATION OR EQUAL. PROGRAM TIME OUT TO 15min. SM: DENOTES SURFACE MOUNTED
P6	WEATHER PROOF IP56, 10A, PHOTO ELECTRIC CELL. FROM HPM
TS	TIMER SWITCH
1B/F	LUMINAIRES SWITCHED & COMBINED WITH FAN SWITCH
LCP	LIGHT SWITCH CONTROL PANEL

#### POWER

KWH	SUPPLY AUTHORITY METER		ELECTRICAL CABLE TRAY LT - DENOTES LADDER TRAY CT - DENOTES CABLE TRAY BT - DENOTES BASKET TRAY SIZES AS NOTED
EM	PRIVATE ENERGY METER		
	SURGE DIVERTER		COMMUNICATIONS CABLE TRAY LT - DENOTES LADDER TRAY CT - DENOTES CABLE TRAY BT - DENOTES BASKET TRAY SIZES AS NOTED
	FUSE		
	EARTH	MSB	MAIN SWITCH BOARD
E	ELECTRICAL DRAINAGE CABLE PIT	DB-X	DISTRIBUTION BOARD
EP	ELECTRICAL PILLAR (LOW VOLTAGE)	DB-X	SWITCHBOARD BY OTHERS HYD - HYDRAULIC (CENTRAL HWU SYSTEM) LIFT - VERTICAL TRANSPORTATION MCC - MECHANICAL CONTROL PANEL
C	COMMUNICATIONS CABLE PIT	PV	PHOTOVOLTAIC PANEL - CONTRACTOR TO SUBMIT DETAILS OF PROPOSED SYSTEM FOR APPROVAL PRIOR TO INSTALL.
PP	WORK STATION POWER POLE	PV	SOLAR INVERTER - CONTRACTOR TO SUBMIT DETAILS OF PROPOSED SYSTEM FOR APPROVAL PRIOR TO INSTALL.
SS	STARTER SOCKET		ISOLATOR
Ø	DIRECT CONNECTION - SINGLE PHASE		CIRCUIT BREAKER
⊗	DIRECT CONNECTION - THREE PHASE		CIRCUIT BREAKER - RCD
●	SINGLE 10A SWITCHED SOCKET - OUTLET WHITE COLOUR.		REMOVABLE LINK
●	DOUBLE 10A SWITCHED SOCKET - OUTLET WHITE COLOUR.		SPARE CIRCUIT BREAKER POLES
			SINGLE PHASE
			THREE PHASE

#### COMMUNICATIONS

	TELECOMMUNICATIONS OUTLET RJ45 (CAT 6), WHITE COLOUR.
TV	COMBINED PAYTV & FTA TELEVISION OUTLET ON ONE PLATE. WHITE COLOUR.
C/R	42RU, 600W X 600D WR SERIES FLOOR MOUNTED COMMUNICATIONS RACK COMPLETE WITH 10WAY POWER DISTRIBUTION UNIT, CAT6 PATCH PANELS, CABLE MANAGERS AND ALL REQUIRED ACCESSORIES.
BUDI M	BUILDING NETWORK BOUNDARY POINT
NTD	NETWORK TERMINATION DEVICE. PROVIDE WITH DOUBLE 10A SOCKET OUTLET FOR POWER SUPPLY.
PCD	PREMISE CONNECTION DEVICE
FDI	FIBRE DISTRIBUTION TERMINAL-12F.
SDI	SPLITTER DISTRIBUTION TERMINAL-1:8.
4G	4G WIFI RADIO MODEM ROUTER UNITS ARE PROVIDED FOR WASTER/GAS METERS, LIFT AND FIP. PROVIDE CAT6 TO CABLE BACK TO THE COMMUNICATION RACK. 4G NETWORK CAPABLE AND 8HR BATTERY LIFE BACK UP.
	MATV AERIAL ANTENNA TO BE MOUNTED ON THE ROOF. THE LOCATION SHOWN IS INDICATIVE AND SUBJECT TO ON SITE SIGNAL STRENGTH TESTING. FROM CLIPSAL.

#### ABBREVIATIONS

3PH	THREE PHASE
AB	ABOVE BENCH
AD	AUTO DOOR (PROVIDE 240V, 10AMP SINGLE GPO AT HIGH LEVEL)
BWU	BOILING/CHILLED WATER UNIT
CL	CLEANERS OUTLET (WIRE ON SAME CIRCUIT)
CM	CEILING MOUNTED
CT	COFFEE MACHINE
CWP	COLD WATER PUMP
DR	CLOTHES DRYER
DW	DISH WASHER
FIP	FIRE INDICATOR PANEL
F	FRIDGE
HD	HEAVY DUTY
HWU	HOT WATER UNIT (CENTRAL ELECTRIC HOT WATER PLANT)
IC	IN CEILING
IJ	IN JOINERY
JP	JACKING PUMP
LO	LOCKER
MDL	METER DATA LOGGER
MW	MICROWAVE
OV	OVEN
RH	RANGEHOOD
RSD	ROLLER SHUTTER DOOR
RWP	RAINWATER PUMP
SM	SURFACE MOUNT
TV	TELEVISION
UB	UNDER BENCH
U/G	UNDERGROUND
USB	SOCKET OUTLET INCORPORATING USB OUTLETS
WM	WASHING MACHINE
WP	WEATHERPROOF

#### LINETYPES

	BUS BAR
	CIRCUIT WIRE
	SWITCH WIRE
	BOARD PANEL OUTLINE
P - P - P - P - P - P -	P - POWER
C - C - C - C - C - C -	C - COMMUNICATIONS
}	CONTINUATION LINE

© CENTRIC BUILDING SERVICES ENGINEERS PTY LTD  
This drawing is the property of Centric Building Services PTY Limited and must not be used, reproduced or copied wholly or in part without the written permission of Centric Building Services Pty Limited. The elements shown on this drawing are prototypical design only. The contractor shall produce workshop drawings for construction purposes. The contractor shall not scale from this drawing and all measurements shall be carried out on site.

P1 30.05.2025 100% FINAL COORDINATION

## ELECTRICAL SERVICES

NEW WAREHOUSE  
36 PLATINUM COURT  
THRUGOONA NSW 2640

Project Number:  
24071

Drawing Number:  
E000

Revision:  
P1

Sydney: (02) 9052 6460  
Newcastle: (02) 9052 6461

Sydney Suite 1, 401 Pacific Hwy  
Artarmon, NSW 2054  
Newcastle Suite 4, 102 Glebe Road  
The Junction, NSW 2291

info@centricengineers.com.au  
www.centricengineers.com





ELECTRICAL SPECIFICATION

GENERAL

CARRY OUT ALL WORK IN ACCORDANCE WITH AS/NZS 3000, THE CURRENT ITERATION OF THE NCC (2022), THE REQUIREMENTS OF THE SUPPLY AUTHORITY, AS WELL AS ALL RELEVANT AUSTRALIAN STANDARDS, AND LICENSING AUTHORITIES.

DRAWINGS TO BE READ IN CONJUNCTION WITH ALL OTHER SERVICES DOCUMENTS, INCLUDING BUT NOT LIMITED TO ARCHITECTURAL, STRUCTURAL, FIRE, HYDRAULICS AND MECHANICAL SERVICES.

CO-ORDINATE ALL WORKS ON SITE WITH ALL OTHER TRADES TO AVOID SITE DIFFICULTIES. CONFIRM EXACT LOCATION AND ELECTRICAL REQUIREMENTS OF ALL EQUIPMENT AND EXACT LOCATIONS PRIOR TO INSTALLATION.

REFER TO ARCHITECT/INTERIOR DESIGNER DRAWINGS FOR MOUNTING HEIGHTS FOR POWER AND DATA OUTLETS.

ANY MATERIALS, APPARATUS ETC., NOT SHOWN ON THE DRAWINGS, BUT WHICH IS MENTIONED IN THIS SPECIFICATION OR VICE VERSA, SHALL BE SUPPLIED AND INSTALLED AT NO EXTRA COST. ANY SERVICES, ITEM OF WORK OR SMALL DETAIL NOT USUALLY SPECIFIED BUT INFERRED AND NECESSARY FOR THE SATISFACTORY OPERATION OF THE SYSTEM OR INSTALLATION, SHALL BE PROVIDED BY THE SUB-CONTRACTOR WITHOUT ANY ADDITIONAL EXPENSE TO THE PROPRIETOR.

IF NEITHER THE SPECIFICATION NOR THE DRAWINGS CONTAIN ANY PARTICULARS OF MINOR PARTS, WHICH ARE NEVERTHELESS CLEARLY TO BE INFERRED OR MINOR PARTS, WHICH ARE NECESSARY FOR THE COMPLETION OF THE WORK UNDER THE SUB-CONTRACT, ALL SUCH PARTS SHALL BE SUPPLIED AND EXECUTED BY THE SUB-CONTRACTOR WITHOUT EXTRA CHARGE.

STANDARDS AND CODES

ALL WORK SHALL BE IN ACCORDANCE WITH THE FOLLOWING:

- NATIONAL CONSTRUCTION CODE AND BUILDING PERMIT CONDITIONS;
- AS 1680 INTERIOR LIGHTING GENERAL PRINCIPLES;
- AS 2293 EMERGENCY ESCAPE LIGHTING AND EXIT SIGNS FOR BUILDINGS;
- AS 3000:2018 WIRING RULES;
- AS 3008 ELECTRICAL INSTALLATION, SELECTION OF CABLES;
- AS 61439 LOW-VOLTAGE SWITCHGEAR AND CONTROL GEAR ASSEMBLIES;
- NSW SERVICES & INSTALLATION RULES;
- LOCAL ELECTRICITY SUPPLY AUTHORITY;
- WORK COVER REQUIREMENTS;
- ALL HEALTH AUTHORITY REQUIREMENTS;
- ALL LOCAL GOVERNMENT REGULATIONS;
- NBN CO DESIGN GUIDELINES;
- PROJECT PPR;
- ENDEAVOUR ENERGY SUPPLY OFFER

DESIGN CHECK

PRIOR TO ORDERING EQUIPMENT, UNDERTAKE A FULL DESIGN CHECK OF ELECTRICAL SERVICES. ENSURE CABLE SIZES ARE SUITABLE FOR THE FULL RATED LOADS AND COMPLY WITH THE VOLTAGE DROP STIPULATIONS OF AS 3000 AND AS 3008, CALCULATED ASSUMING THAT THE CABLES ARE LOADED AT THE RATED CURRENT OF THE CIRCUIT BREAKER PROVIDING PROTECTION. INCLUDE DERATING OF ALL CABLES AS REQUIRED IN THE DESIGN CHECKS. CHECK ALL CIRCUIT BREAKER SIZES ALLOCATED ARE SUITABLE FOR RELEVANT EQUIPMENT.

CHECK THAT THE REQUIREMENTS OF NCC PART J ARE INCLUDED.

CHECK THAT EMERGENCY LIGHTING SPACING COMPLIES WITH AS 2293 AND EXIT LIGHTS ARE PROVIDED IN ALL CHANGES IN THE DIRECTION OF TRAVEL, IN PATHS OF EGRESS.

CHECK THAT THERE ARE ADEQUATE NUMBER OF POLES ON THE SWITCHBOARD FOR THE NUMBER OF CIRCUITS REQUIRED. INCLUDE AN ALLOWANCE OF 25% SPARE CAPACITY FOR FUTURE EXPANSIONS. ENSURE RCDs ARE PROVIDED WHERE REQUIRED BY AS 3000.

CHECK CAPACITY OF CABLE SUPPORTS INCLUDING BUT NOT LIMITED TO CABLE TRAYS, CONDUITS, DUCTING, ETCETERA, TO ENSURE NEW CABLES CAN BE ACCOMMODATED AND INSTALLED IN THE INTENDED RUNS, ENSURING THAT AT COMPLETION OF THE WORKS 10% SPARE CAPACITY IS AVAILABLE.

ADVISE OF ANY ISSUES WITHIN 4 WEEKS OF AWARD OF CONTRACT. REQUEST ANY ADDITIONAL INFORMATION NECESSARY TO UNDERTAKE THE DESIGN CHECKS. BE RESPONSIBLE FOR THE COST OF RECTIFYING ANY ISSUES WITH CABLE SIZES, CIRCUIT BREAKERS, EMERGENCY AND EXIT LIGHTING DESIGNS THAT HAVE NOT BEEN FORMALLY ADVISED IN AN RFI PRIOR TO ORDERING EQUIPMENT AND MATERIAL.

SCOPE OF WORKS

THE WORKS REQUIRED TO FULFIL THIS CONTRACT SHALL INVOLVE THE SUPPLY, INSTALLATION, TESTING, COMMISSIONING, CERTIFICATION MAINTENANCE AND WARRANTIES OF THE ELECTRICAL SERVICES / WORKS LISTED BELOW.

ALL WORK SHALL COMPLY WITH THE REQUIREMENTS OF THIS SPECIFICATION. WORK IS TO BE CARRIED OUT BY ACCREDITED ENGINEERS AND TRADES PEOPLE HAVING AT LEAST FIVE YEARS' EXPERIENCE. THE INSTALLATION QUALITY SHALL BE TO INDUSTRY PRACTICE FIRST CLASS TRADES PRINCIPLES.

ALL WORK SHALL BE EQUAL TO OR BETTER THAN THE APPROPRIATE LATEST REVISION OF THE CURRENT APPLICABLE AUSTRALIAN STANDARD. ANY PROPOSAL TO INSTALL ALTERNATIVE ITEMS TO THOSE NOMINATED IN THE SPECIFICATION AND ON THE DRAWINGS SHALL BE ACCOMPANIED BY A WRITTEN CONFIRMATION BY THE MANUFACTURER THAT THE ALTERNATIVE PRODUCT MEETS THE DESIGN INTENT AND COMPLIES WITH CURRENT AUSTRALIAN STANDARDS.

WHERE DOUBTS EXIST AS TO THE APPROPRIATE STANDARD, A DECISION SHALL BE MADE BY THE PROJECT MANAGER BEFORE COMMENCEMENT OF ANY WORK ON OR OFF THE SITE. IF ANY DOUBT EXISTS AS TO WHETHER A SECTION OF THE DESIGN IS ABLE TO COMPLY WITH THE RELEVANT AUTHORITIES REGULATIONS, THE SUPERINTENDENT SHALL BE NOTIFIED PRIOR TO COMMENCEMENT OF ANY WORK. NO CONSIDERATION OF THE CLAIM FOR REDUNDANT OR ABORTIVE WORK SHALL BE GIVEN IF THE SUPERINTENDENT IS NOT NOTIFIED.

THE SCOPE OF WORK COVERED BY THIS CONTRACT INCLUDES, BUT SHALL NOT BE LIMITED TO THE FOLLOWING:

- MAIN SWITCHBOARD
- CONSUMER MAINS
- DISTRIBUTION BOARDS
- METERING
- EARTHING
- COORDINATION WITH OTHER SERVICES
- SUBMAINS MAINS
- CONDUITS FOR INCOMING POWER AND COMMUNICATIONS CABLING
- CABLE SUPPORT SYSTEMS INCLUDING TRAYS, DUCTS, CONDUITS
- LED NON-MONIORED EMERGENCY AND EXIT LIGHTING SYSTEM
- POWER TO MECHANICAL SERVICES ISOLATORS INCLUDING TERMINATION OF SUBMAINS
- NBN COMMUNICATION SYSTEM
- TESTING, COMMISSIONING, AND PLACING INTO WORKS THE COMPLETE ELECTRICAL INSTALLATION
- PROVISION OF ACCURATELY RECORDED "AS INSTALLED" DRAWINGS AND OPERATION AND MAINTENANCE MANUALS FOR THE COMPLETE WORKS
- PROVISION OF TWELVE (12) MONTHS WARRANTY AND COMPREHENSIVE MAINTENANCE DURING THE DEFECTS LIABILITY PERIOD. THIS INCLUDES FOR THE PROMPT RETURN TO SITE FOR RESOLUTION OF ANY PROBLEMS
- TEMPORARY BUILDER'S SUPPLIES

EARTHING

PROVIDE A COMPLETE ELECTRICAL EARTHING SYSTEM THAT COMPRISES A NETWORK OF BONDING BETWEEN EQUIPMENT, ELECTRODES AND SERVICES MAINS. IT SHALL COMPLY WITH AS 3000 AND THE SUPPLY AUTHORITY'S REQUIREMENTS. INCORPORATE AN ADDITIONAL SEPARATE EARTHING SYSTEM TO THE STRUCTURED CABLING SYSTEM, TELEPHONE DISTRIBUTION FRAMES, ELECTRODES, ETC TO ACA STANDARD TS 009. PROVIDE EARTHING TO:

- EQUIPMENT ENCLOSURES AND DISTRIBUTION BOARD.
- METAL CONDUITS, FRAMES, CABLE TRAYS AND DUCTS.
- CABLE SHEATHS.
- METAL PIPES ENTERING OR LEAVING THE TENANCY.
- INTERNAL METAL PIPING SYSTEMS.
- METALLIC FACADE ELEMENTS.

PROVIDE STRANDED COPPER EARTHING CONDUCTORS OF ADEQUATE CROSS-SECTION, AND CONTINUOUS THROUGHOUT THEIR ENTIRE LENGTH. THEY SHALL BE GREEN/YELLOW, INSULATED TO A MINIMUM V-75 0.6/1KV RATING, AND ENCLOSED WITH A SHEATH.

SELECT ALL EARTHING CONDUCTOR SIZES IN LINE WITH AS 3000 REQUIREMENTS; CARRY OUT FAULT LOOP STUDY FOR THE FINAL CIRCUIT ARRANGEMENTS TO MEET FINAL SUBCIRCUIT AND PROTECTION PARAMETERS. EARTHING CONDUCTORS SHALL BE MINIMUM:

- 2.5mm<sup>2</sup> CROSS-SECTIONAL AREA FOR GENERAL EARTHING.
- 6mm<sup>2</sup> FOR ANY MAINS AND SUBMAINS CABLING TO DISTRIBUTION BOARDS AND CONTROL PANELS.
- 6mm<sup>2</sup> FOR ANY BONDING CONDUCTORS FOR EARTHING.

PROVIDE A MAIN EARTHING CONDUCTOR FOR THE INSTALLATION; CONNECTED TO A BOLTED, LABELLED CONNECTION ON THE EARTH ELECTRODES, AND BONDED TO THE INCOMING METALLIC SERVICES.

ELECTRICAL SUPPLY

PROVIDE CONSUMERS MAINS FROM THE POINT OF SUPPLY TO THE MAIN SWITCHBOARD, INSTALLED IN CONDUITS UNDERGROUND AND ON CABLE TRAYS WITHIN THE BASEMENT. CO-ORDINATE ALL DETAILS OF THE INSTALLATION WITH THE SUPPLY AUTHORITY AT THE MAINS CABLE ORIGIN AND COMMISSION ALL ELECTRICAL EQUIPMENT AS REQUIRED. SUPPLY AUTHORITY IS ENDEAVOUR ENERGY.

COORDINATE ALL ACCESS REQUIREMENTS TO SUPPLY AUTHORITY EQUIPMENT AND INFRASTRUCTURE, AND PROVIDE ALL FACILITIES NECESSARY (INCLUDING ARRANGEMENTS FOR EASEMENTS, RIGHTS OF WAY, COVENANTS, ETC).

OBTAIN ALL INFORMATION FROM THE PRINCIPAL CONCERNING THE APPLICATION TO THE SUPPLY AUTHORITY, AND THE SUPPLY OFFER DETAILS, AND INCORPORATE INTO FUTURE SUBMISSIONS TO THE SUPPLY AUTHORITY; COLLATE ALL INFORMATION AND MAKE ALL APPLICATIONS NECESSARY. ENSURE THAT ELECTRIFICATION WILL BE PROVIDED BY THE SUPPLY AUTHORITY IN TIME TO MEET THE CONSTRUCTION AND COMMISSIONING PROGRAMS OF ALL PARTS OF THE INSTALLATION.

THE ELECTRICAL SUPPLY TO THE INSTALLATION WILL BE 400/230V, 4-WIRE, 3 PHASE AND NEUTRAL AND 50 HZ.

DETERMINE THE PROSPECTIVE FAULT LEVEL CURRENT AT THE INSTALLATIONS POINT OF CONNECTION AND PROVIDE EQUIPMENT AND FACILITIES SELECTED TO WITHSTAND THE FAULT LEVEL AT THE RELEVANT PARTS OF THE INSTALLATION. PROVIDE FAULT LEVEL COORDINATION THROUGHOUT THE INSTALLATION.

PROVIDE ALL METERING, INCLUDING COORDINATION OF LOCATIONS AND ACCESS NECESSARY, IN ACCORDANCE WITH THE NSW SERVICE AND INSTALLATION RULES, AND SUPPLY AUTHORITY REQUIREMENTS. METERS SHALL BE LOCATED EITHER IN THE MAIN SWITCHROOM, OR IN DEDICATED ELECTRICAL CUPBOARDS.

SATISFY ALL SUPPLY AUTHORITY ACCESS AND SIGNAGE REQUIREMENTS (INCLUDING LOCKING FACILITIES) FOR ACCESS TO ALL METERING LOCATIONS THROUGHOUT THE ACCESS ROUTE, FROM THE BUILDING ENTRANCES.

CABLING

PROVIDE WIRING INSTALLATION COMPLETE WITH ALL SUPPORTS AND FIXINGS INCLUDING CABLE TRAYS, CONDUITS ETCETERA. UTILISE THE FOLLOWING CABLE INSTALLATION METHODS:

- GENERALLY INSTALL CABLES FULLY CONCEALED FROM VIEW, ENCLOSED IN CONDUIT CAST INTO FLOOR SLABS OR VERTICALLY IN WALLS; OR CABLES IN FALSE CEILING SPACE AND WITHIN CAVITIES.
- CAR PARKS: CONCEALED FROM VIEW, INSULATED CONDUCTORS ENCLOSED IN CONDUIT CAST INTO CONCRETE FLOOR/CEILING SLABS OR ON CABLE TRAY;
- FACADES: UTILISE BRASS OR COPPER CONDUITS, AND FIXINGS IN METHODS TO APPROVAL, FOR ALL AREAS WHETHER HERITAGE OR NOT.
- STAIRS: FULLY CONCEALED FROM VIEW, INSULATED CONDUCTORS ENCLOSED WITHIN CONDUIT CAST INTO THE WALL/CEILING SLABS.

UTILISE SINGLE INSULATED CONDUCTORS ENCLOSED WITHIN CONDUITS OR WIRING DUCTS, INSTALLED ON THE LOOP-IN SYSTEM WITHOUT THE USE OF CONNECTORS AND JOINTED, ONLY AT OUTLET OR SWITCH POSITIONS.

UTILISE INSULATED AND SHEATHED CONDUCTORS WITHIN CONCEALED CONDUIT WHERE RUN IN RENDERED WALLS OR CONCRETE. INSULATED AND SHEATHED CONDUCTORS SHALL NOT BE INSTALLED IN LOCATIONS WHERE THEY CANNOT EASILY BE WITHDRAWN FOR REWIRING PURPOSES.

CABLING SUPPORT

PROVIDE CABLE TRAYS AND LADDERS TO SUPPORT MULTIPLE RUNS OF CABLING. CABLE SUPPORTS SHALL:

- BE SIZED WITH MINIMUM 25% SPARE CAPACITY SO THAT IT IS LOADED TO NO MORE THAN 75% OF ITS WIDTH (INCLUDING SPACES BETWEEN CABLES FOR DE-RATING PURPOSES).
- HAVE A CORROSION RESISTANT FINISH, PRESSED AND FOLDED ZINCALUME OR GALVANISED SHEET STEEL.
- BE FITTED WITH THE MANUFACTURER'S STANDARD BENDS, RISERS, CURVES, REDUCERS AND FISHLATES.
- BE FIXED TO APPROVED GALVANISED STEEL BRACKETS AND HANGERS, EXCEPT WHERE INSTALLED VERTICALLY ON A CONTINUOUS WALL.
- BE FIXED SUCH THAT THERE IS AN AIR SPACE OF 50mm MINIMUM TO THE STRUCTURE TO WHICH IT IS SECURED.
- BE SUPPORTED SUCH THAT THE MAXIMUM DEFLECTION UNDER BEARING FULL LOAD, BETWEEN SUPPORTS, DOES NOT EXCEED 5mm.
- BE SUPPORTED WITH BOOKER RODS TO MITIGATE TRAY/LADDER DEFLECTION IN ANY PLANE.
- BE INSTALLED PARALLEL OR AT RIGHT ANGLES TO THE BUILDING STRUCTURE AND PLANNING GRIDS.
- HAVE MINIMUM OF 200mm CLEARANCE BETWEEN BOTTOM OF CABLE TRAY SUPPORT BRACKET AND THE TOP OF CEILING TILE.
- BE SECURED TO WALLS AND CEILING WITH BRACKETS OF APPROVED DESIGN, SO AS TO SUPPORT TRAYS IN A STRAIGHT AND TRUE LINE.
- BE EARTHED WITH EQUIPOTENTIAL BONDING ALONG THE LENGTH OF THE CABLE LADDER/TRAY. PROVIDE PLATES AND COMPRESSION BOLTS/WASHERS', OR CABLE STRAPS BETWEEN SECTIONS.
- BE HOT DIPPED GALVANISED, EQUAL TO UNISTRUT OR EQUIVALENT.

MAIN SWITCHBOARD

PROVIDE THE MAIN SWITCHBOARD OUTDOOR, WEATHER PROOF AND FREE STANDING BOARD.

UNLESS DOCUMENTED OTHERWISE ON THE ELECTRICAL SERVICES DRAWINGS, MAIN SWITCHBOARD SHALL BE A MINIMUM OF FORM 2B, 10KA FAULT CURRENT RATING AND IP68 PROTECTION.

PROVIDE THE MAIN SWITCHBOARD SERVICE PROTECTIVE DEVICE WITH ELECTRONIC TRIP UNIT (COMPLETE WITH LOCKING AND SEALING FACILITIES), SUPPLY AUTHORITY METERING EQUIPMENT AND SWITCHGEAR.

THE MAIN SWITCHBOARD SHALL BE FREESTANDING OF UNITARY FOLDED AND WELDED CONSTRUCTION, AND FABRICATED FROM MINIMUM 2mm STEEL. IT SHALL CONTAIN AN OPEN BASE AND A WIRING COMPARTMENT WITH COVER PANE, FOR ACCESS TO CABLES AND CONDUITS WHICH PASS THROUGH THE BASE OF THE SWITCHBOARD.

PROVIDE A SUPPORTING BASE FRAME FORMED FROM GALVANISED CHANNEL SECTIONS, 75mm HIGH, AND A FULL COMPLEMENT OF CONDUIT KNOCKOUTS IN A REMOVABLE COVER PLATE AT THE TOP AND BOTTOM OF THE ENCLOSURE.

DISTRIBUTION BOARDS

UNLESS DOCUMENTED OTHERWISE ON THE ELECTRICAL SERVICES DRAWINGS, DISTRIBUTION BOARDS SHALL BE THREE PHASE, A MINIMUM OF FORM 1, 6KA FAULT CURRENT RATING, 12 POLES, IP42 PROTECTION AND HAVE A CURRENT RATING OF 32 AMPS.

PROVIDE CHASSIS WITH A MINIMUM OF 20% SPARE SPACE REMAINING IN ALL DISTRIBUTION BOARDS AFTER COMPLETION OF THE WORKS.

DISTRIBUTION BOARDS SHALL BE DEAD FRONT TOTALLY ENCLOSED WITH FRONT CONNECTED MINIATURE CIRCUIT BREAKERS AND A MAIN SWITCH. PROVIDE SUITABLE DISCRIMINATION AND CASCADE TO MAIN SWITCH, TO MEET FAULT LEVEL OR PROTECTION REQUIREMENTS.

NBN

GENERAL

PROVIDE A COMPLETE CABLING SYSTEM THROUGHOUT THE BUILDING COMPLIANT TO THE NBN CO STANDARDS. ENSURE NBN CO'S SPATIAL AND ENVIRONMENTAL REQUIREMENTS, FOR EQUIPMENT WITHIN PREMISES, ARE COMPLIED WITH THROUGHOUT THE INSTALLATION.

PROVIDE A MANUFACTURER'S WARRANTY (10 YEARS MINIMUM) FOR THE SYSTEM AND FULLY DETAILED AS INSTALLED DRAWINGS PRIOR TO PRACTICAL COMPLETION.

RESPONSIBILITIES

PROVIDE:

- THE SERVICE DROP CONDUITS (P50 (Ø50mm) WHITE RIGID COMMUNICATIONS CONDUITS) FROM NOMINATED TELECOMMUNICATIONS PIT ON THE STREET TO THE BUILDING FIBRE DEVICE (BFD), IN THIS INSTANCE, A BUDI-M.
- WHITE 25mm RIGID COMMUNICATIONS CONDUIT (CAST IN SLAB AS REQUIRED), COMPLETE WITH DRAWSTRING, FROM THE BFD TO EACH NETWORK TERMINATION DEVICE (NTD).
- DOUBLE 10A SOCKET OUTLET (AT EACH NTD LOCATION), OUTLET TO BE POSITIONED MAXIMUM 200mm AWAY FROM NBN EQUIPMENT.
- 8 PORT PATCH PANEL AT NTD LOCATION.
- SPACE AND SHELF FOR AN ISP ROUTER NTD LOCATION.
- STAR-WIRED CAT 6 STRUCTURED CABLING THAT IS TERMINATED AT THE NTD PATCH PANEL.

CIRCUITING

DETERMINE THE FINAL CIRCUITING AND SUBCIRCUITING ARRANGEMENTS FOR THE INSTALLATION CONSIDERING SITE SPECIFIC CONSTRAINTS FOR WIRING, AND DESIGN DRAWINGS INFORMATION FOR SUBCIRCUITING. ENSURE THAT CIRCUIT NUMBERS ARE CONFIRMED PRIOR TO COMPLETING DESIGN OF DISTRIBUTION BOARDS. ENSURE SWITCHBOARDS ARE CONFIGURED TO ACCOMMODATE FINAL CIRCUITING ARRANGEMENTS.

CONFIRM THE NUMBERS, LOCATIONS, AND DETAILS OF ALL OUTLETS. CONFIRM SUPPLIED EQUIPMENT NAMEPLATE RATINGS, CIRCUIT PHASE REQUIREMENTS, EXACT LOCATIONS AND CONNECTION TYPE, PRIOR TO ARRANGING CIRCUITING. ARRANGE SUBCIRCUITS TO MEET ALL VOLTAGE DROP, FAULT LOOP AND CURRENT CARRYING CAPACITIES AS SPECIFIED BY AS 3000; AND INCORPORATE INTEGRAL EARTH LEAKAGE PROTECTION WHERE REQUIRED. ARRANGE SUBCIRCUITS AS FOLLOWS:

- SEPARATE SUBCIRCUITS FOR LIGHTING AND POWER, AND DEDICATED OR FIXED EQUIPMENT.
- PROVIDE 20A RATED CIRCUIT BREAKER FOR LIGHTING SUBCIRCUITS WITH NUMBER OF FITTINGS LIMITED TO NOT EXCEED CONNECTED LOAD UTILISATION OF 60% (BASED ON FULL CONNECTED LIGHTING LOAD) OR MAXIMUM 50% LEAKAGE CURRENT.
- PROVIDE NO MORE THAN 20 LUMINAIRES PER CIRCUIT.
- 20A RATED CIRCUIT BREAKERS FOR GENERAL PURPOSE POWER SUBCIRCUITS.
- ARRANGE CIRCUITS AS PER THE DETAILS ON THE SINGLE LINE DIAGRAMS.
- PROVIDE NO MORE THAN EIGHT DOUBLE 10A SWITCHED SOCKET OUTLETS PER CIRCUIT.
- PROVIDE A DEDICATED CIRCUIT FOR EACH 15A OR 20A OUTLET.
- PROVIDE A DEDICATED CIRCUIT FOR EACH 3 PHASE OUTLET OR PERMANENTLY CONNECTED EQUIPMENT.
- ARRANGE CIRCUITS TO AVOID CONNECTED EQUIPMENT INTERFERENCE BETWEEN APPLIANCES DUE TO FIXED WIRING INSTALLATION.
- ARRANGE NUMBERS OF FIXINGS/OUTLETS/EQUIPMENT CIRCUITED TO NOT CAUSE SPURIOUS TRIPPING WITH USAGE UNDER LOADS.
- PROVIDE DEDICATED CIRCUIT FOR GAS AND WATER METERING OUTLETS.
- PROVIDE CIRCUITS FOR NBN, MATV AND COMMUNICATIONS EQUIPMENT, AS REQUIRED.
- SELECT CONDUCTOR SIZE TO SUIT LOAD, VOLTAGE DROP AND FAULT LOOP IMPEDANCE FOR PROTECTIVE CIRCUIT.

SELECT ALL CONDUCTORS TO LIMIT VOLTAGE DROP TO A MAXIMUM OF 5% OF THE DESIGNATED SUPPLY VOLTAGE TO ANY FINAL OUTLET ON THE SYSTEM, UNDER CALCULATED MAXIMUM DEMAND LOAD CONDITIONS; WITH AN ALLOWANCE OF MAXIMUM 1.5% OF THE TOTAL VOLTAGE DROP THROUGH THE FINAL SUBCIRCUIT TO THE FARTHEST CONNECTED OUTLET.

EMERGENCY AND EXIT LIGHTING

PROVIDE A COMPLETE EMERGENCY AND EXIT LIGHTING SYSTEM THROUGHOUT THE DEVELOPMENT AS PER THE REQUIREMENTS OF THE NCC AND AS 2293, USING EMERGENCY LUMINAIRES AND EXIT SIGNS WITH INTEGRAL BATTERIES AND CHARGERS.

ALL EMERGENCY LUMINAIRES AND ILLUMINATED EXIT SIGNS SHALL BE:

- LED.
- OF THE SELF-CONTAINED TYPE.
- CLASSIFIED IN ACCORDANCE WITH AS 2293, WITH THE CLASSIFICATION MARKED ON THE LUMINAIRE LABEL.
- WITH LITHIUM TECHNOLOGY BATTERIES.

DETERMINE THE FINAL LOCATION, DIRECTIONAL INDICATION, AND QUANTITY OF EMERGENCY LUMINAIRES AND EXIT SIGNS IN CONJUNCTION WITH THE PRINCIPAL CERTIFYING AUTHORITIES' (PCA) REQUIREMENTS. PROVIDE AN ADDITIONAL 10% OF EMERGENCY LUMINAIRES AND EXIT SIGNS (ROUND UP TO THE NEAREST NUMBER) OVER THE QUANTITY INDICATED, TO SATISFY CERTIFIER REQUIREMENTS. PLACE ALL REMAINING FITTINGS INTO STORAGE ON SITE WITH ALL OTHER SPARES SUPPLIED.

ALL EMERGENCY LUMINAIRES AND ILLUMINATED EXIT SIGNS SHALL:

- BE OF THE SELF-CONTAINED NON-MAINTAINED TYPE.
- CONTAIN A MAINS FAILURE RELAY.
- SECURELY FASTENED IN POSITION WITH PURPOSE MADE CLAMPS SEPARATELY HOUSED IN A BATTERY PACK.
- BE LOCATED CLEAR OF ANY HEAT SOURCE.
- BE POSITIONED TO PERMIT REMOVAL AND REPLACEMENT WITHOUT REMOVING OTHER COMPONENTS, AND WITH THE LUMINAIRE MOUNTED IN POSITION.
- HAVE REVERSE BATTERY POLARITY PROTECTION.
- BE PROVIDED WITH AN INTEGRAL TEST SWITCH TO SIMULATE MAINS FAILURE.
- HAVE A CHARGE INDICATOR LED SHOWING MAINS SUPPLY AVAILABLE AND CHARGING CIRCUIT STATUS.
- BE ADEQUATELY VENTILATED.
- INCLUDE INTEGRAL BATTERIES, INVERTER, CHARGER AND CHANGE-OVER DEVICE.
- BE DESIGNED FOR A 10 YEAR EXPECTED LIFETIME INCLUDING THE DRIVER AND THE LEDS.
- HAVE A GUARANTEED LIFE OF 4 YEARS WHEN OPERATED IN ACCORDANCE WITH MANUFACTURER'S DIRECTIONS.
- BE CLASSIFIED IN ACCORDANCE WITH AS 2293. THE CLASSIFICATION SHALL BE CLEARLY MARKED ON THE LUMINAIRE LABEL.
- BE TESTED IN ACCORDANCE WITH AS 2293 WITH RESPECT TO THERMAL/DURATION, AND PHOTOMETRY RESULTING IN A CLASSIFICATION.



CENTRIC  
Building Services Engineers

© CENTRIC BUILDING SERVICES ENGINEERS PTY LTD  
This drawing is the property of Centric Building Services PTY Limited and must not be used, reproduced or copied wholly or in part without the written permission of Centric Building Services PTY Limited. The elements shown on this drawing are prototypical design only. The contractor shall produce workshop drawings for construction purposes. The contractor shall not scale from this drawing and all measurements shall be carried out on site.

P1 30.05.2025 100% FINAL COORDINATION

100%  
ISSUE

ELECTRICAL  
SERVICES

Project North

Client:  
Architect: VINCENT JARVIS

Project Number: 24071  
Drawing Number: E001  
Revision: P1

Drawn by: HR  
Designed by: GA  
Approved by: LR  
Scale: NTS

NEW WAREHOUSE, 36 PLATINUM  
COURT, THRUOGOONA, NSW,2640

ELECTRICAL SPECIFICATIONS



Sydney: (02) 9052 6460  
Newcastle: (02) 9052 6461



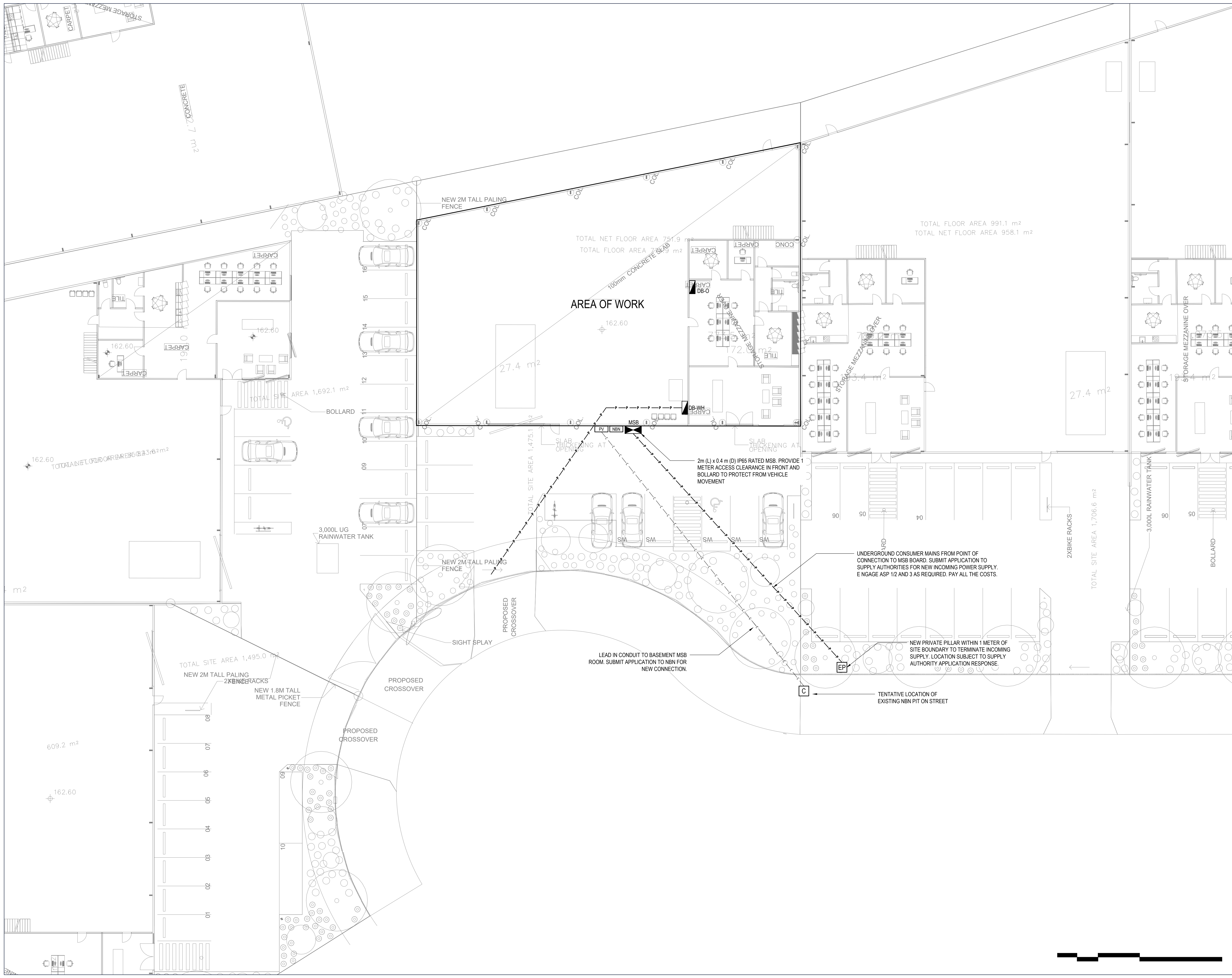
Sydney: Suite 1, 401 Pacific Hwy  
Artarmon, NSW 2064  
Newcastle: Suite 4, 102 Glebe Road  
The Junction, NSW 2291



info@centricengineers.com.au  
www.centricengineers.com







**CENTRIC**  
Building Services Engineers

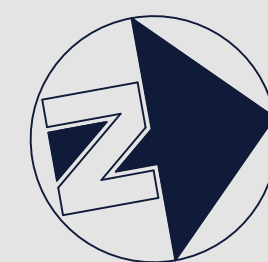
© **CENTRIC BUILDING SERVICES ENGINEERS PTY LTD**  
This drawing is the property of Centric Building Services PTY Limited and must not be used, reproduced or copied wholly or in part without the written permission of Centric Building Services PTY Limited. The elements shown on this drawing are prototypical design only. The contractor shall produce workshop drawings for construction purposes. The contractor shall not scale from this drawing and all measurements shall be carried out on site.

P1 30.05.2025 100% FINAL COORDINATION

**100%  
ISSUE**

**ELECTRICAL  
SERVICES**

Project North



Client: VINCENT JARVIS  
Architect:

Project Number: 24071  
Drawing Number: E002  
Revision: P1

Drawn by: HR  
Designed by: GA  
Approved by: LR  
Scale: 1:150 @ A1

NEW WAREHOUSE, 36 PLATINUM  
COURT, THRUGOONA, NSW.2640

SITE SERVICES



Sydney: (02) 9052 6460  
Newcastle: (02) 9052 6461



**Sydney:** Suite 1, 401 Pacific Hwy  
Artarmon, NSW 2064  
**Newcastle:** Suite 4, 102 Glebe Road  
The Junction, NSW 2291



info@centricengineers.com.au  
www.centricengineers.com







**CENTRIC**  
Building Services Engineers

© CENTRIC BUILDING SERVICES ENGINEERS PTY LTD  
This drawing is the property of Centric Building Services PTY Limited and must not be used, reproduced or copied wholly or in part without the written permission of Centric Building Services PTY Limited. The elements shown on this drawing are prototypical design only. The contractor shall produce workshop drawings for construction purposes. The contractor shall not scale from this drawing and all measurements shall be carried out on site.

P1 30.05.2025 100% FINAL COORDINATION

**100%  
ISSUE**

**ELECTRICAL  
SERVICES**

Project North



Client: VINCENT JARVIS  
Architect:

Project Number: 24071  
Drawing Number: E100  
Revision: P1

Drawn by: HR  
Designed by: GA  
Approved by: LR  
Scale: 1:100 @ A1

NEW WAREHOUSE, 36 PLATINUM  
COURT, THRUGOONA, NSW,2640

LEVEL G FLOOR PLAN POWER &  
COMMUNICATIONS LAYOUT



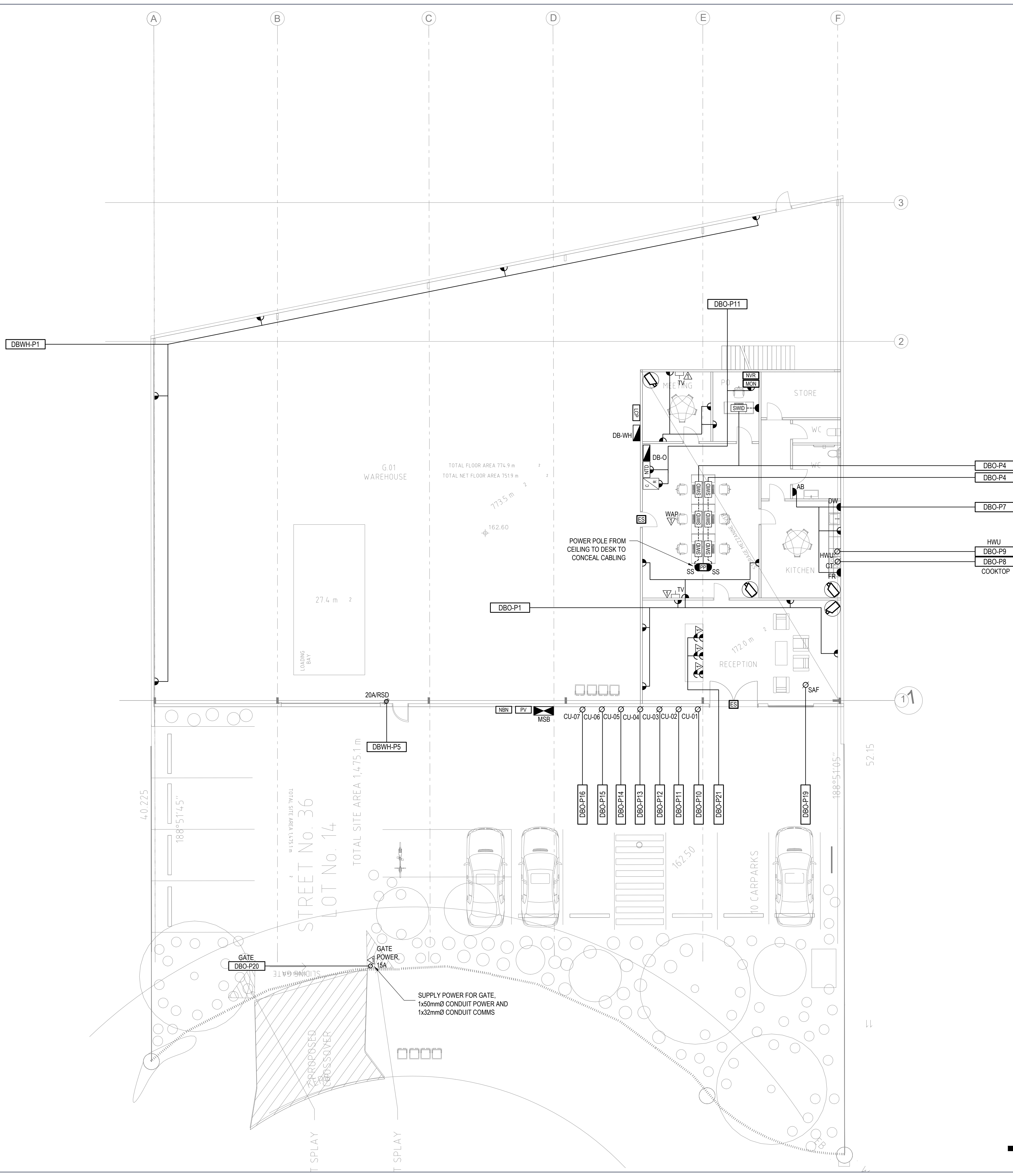
Sydney: (02) 9052 6460  
Newcastle: (02) 9052 6461

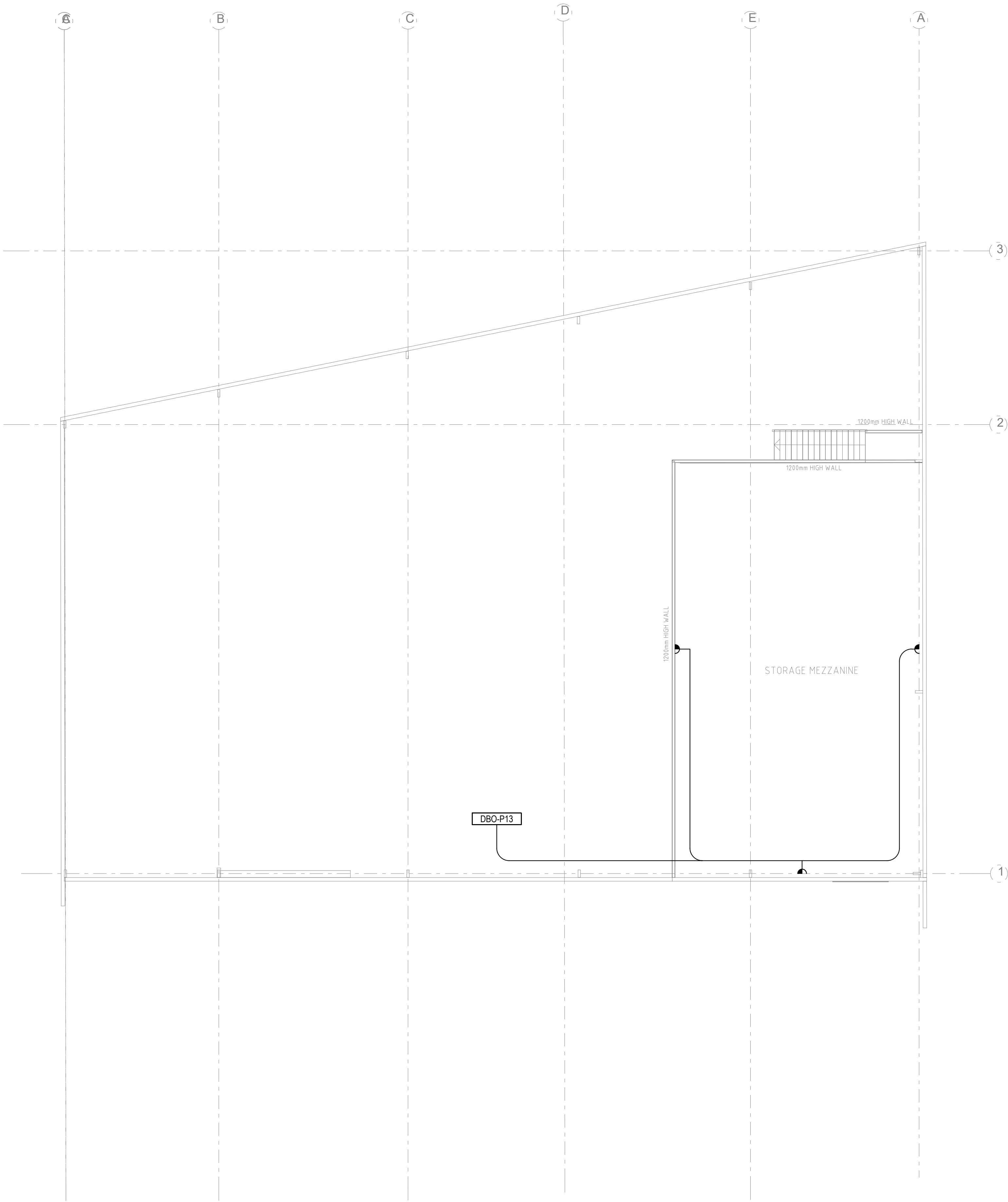


**Sydney:** Suite 1, 401 Pacific Hwy  
Artarmon, NSW 2064  
**Newcastle:** Suite 4, 102 Glebe Road  
The Junction, NSW 2291



info@centricengineers.com.au  
www.centricengineers.com





- GENERAL NOTES:
1. REFER TO DRAWING WH-E000 FOR THE LEGEND.
  2. ALL EQUIPMENT AND ACCESSORIES SHALL BE NEW UNLESS NOTED OTHERWISE.
  3. FINAL POSITION OF ALL EQUIPMENT TO BE DETERMINED ON SITE PRIOR TO INSTALLATION.
  4. REFER TO ARCHITECTURAL DRAWINGS FOR FINAL LOCATIONS AND MOUNTING HEIGHTS.



**CENTRIC**  
Building Services Engineers

© **CENTRIC BUILDING SERVICES ENGINEERS PTY LTD**  
This drawing is the property of Centric Building Services PTY Limited and must not be used, reproduced or copied wholly or in part without the written permission of Centric Building Services PTY Limited. The elements shown on this drawing are prototypical design only. The contractor shall produce workshop drawings for construction purposes. The contractor shall not scale from this drawing and all measurements shall be carried out on site.

P1 30.05.2025 100% FINAL COORDINATION

**100%  
ISSUE**

**ELECTRICAL  
SERVICES**

Project North



Client:  
Architect: VINCENT JARVIS

Project Number: 24071  
Drawing Number: E101  
Revision: P1

Drawn by: HR  
Designed by: GA  
Approved by: LR  
Scale: 1:100 @ A1

NEW WAREHOUSE, 36 PLATINUM  
COURT, THRUGOONA, NSW,2640

LEVEL M FLOOR PLAN  
POWER LAYOUT



Sydney: (02) 9052 6460  
Newcastle: (02) 9052 6461

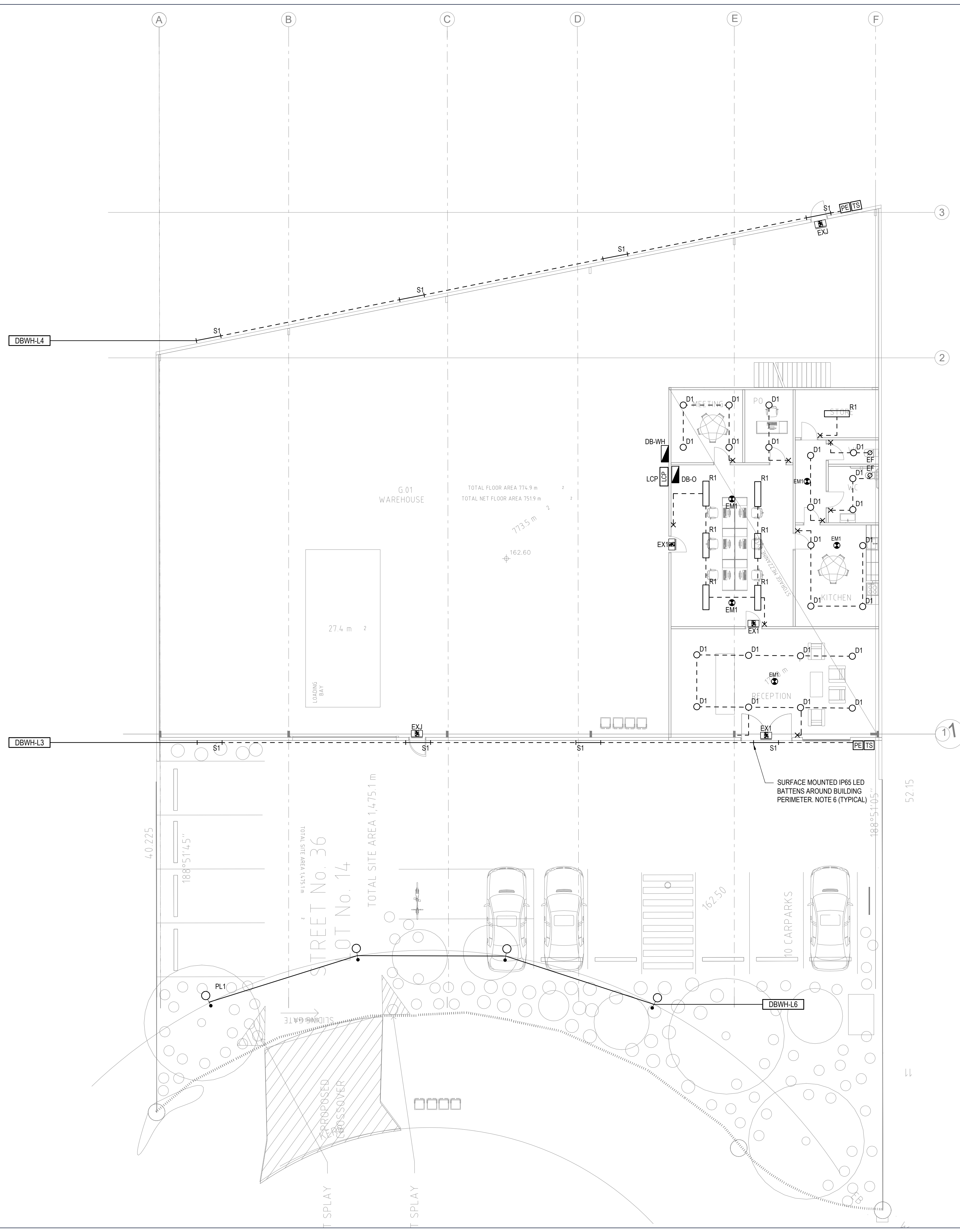


**Sydney:** Suite 1, 401 Pacific Hwy  
Artarmon, NSW 2064  
**Newcastle:** Suite 4, 102 Glebe Road  
The Junction, NSW 2291



info@centricengineers.com.au  
www.centricengineers.com





GENERAL NOTES:

1. REFER TO DRAWING E000 FOR THE LEGEND.
2. ALL EQUIPMENT AND ACCESSORIES SHALL BE NEW UNLESS NOTED OTHERWISE.
3. FINAL POSITION OF ALL EQUIPMENT TO BE DETERMINED ON SITE PRIOR TO INSTALLATION.
4. ALL SWITCHES SHALL BE INSTALLED AT 1000mm AFFL.
5. PROVIDE EXIT AND EMERGENCY LIGHTING IN ACCORDANCE WITH NCC REQUIREMENTS AND AS:2293.1.
6. EXTERNAL LIGHTING TO CONTROLLED VIA PE CELL AND TIMECLOCK ARRANGEMENT WITH MANUAL OVERRIDE SWITCH PROVIDED ADJACENT TO DB.
7. PROVIDE TRENCHING, INSTALLATION OF Ø60mm HD-uPVC CONDUIT (ORANGE) AND BACKFILLING BETWEEN LIGHT POLES.



**CENTRIC**  
Building Services Engineers

© **CENTRIC BUILDING SERVICES ENGINEERS PTY LTD**  
This drawing is the property of Centric Building Services PTY Limited and must not be used, reproduced or copied wholly or in part without the written permission of Centric Building Services PTY Limited. The elements shown on this drawing are prototypical design only. The contractor shall produce workshop drawings for construction purposes. The contractor shall not scale from this drawing and all measurements shall be carried out on site.

P1 30.05.2025 100% FINAL COORDINATION

**100%  
ISSUE**

**ELECTRICAL  
SERVICES**

Project North



Client: VINCENT JARVIS  
Architect:

Project Number: 24071  
Drawing Number: E200  
Revision: P1

Drawn by: HR  
Designed by: GA  
Approved by: LR  
Scale: 1:100 @ A1

NEW WAREHOUSE, 36 PLATINUM  
COURT, THRUGOONA, NSW,2640

LEVEL G FLOOR PLAN  
LIGHTING LAYOUT



Sydney: (02) 9052 6460  
Newcastle: (02) 9052 6461



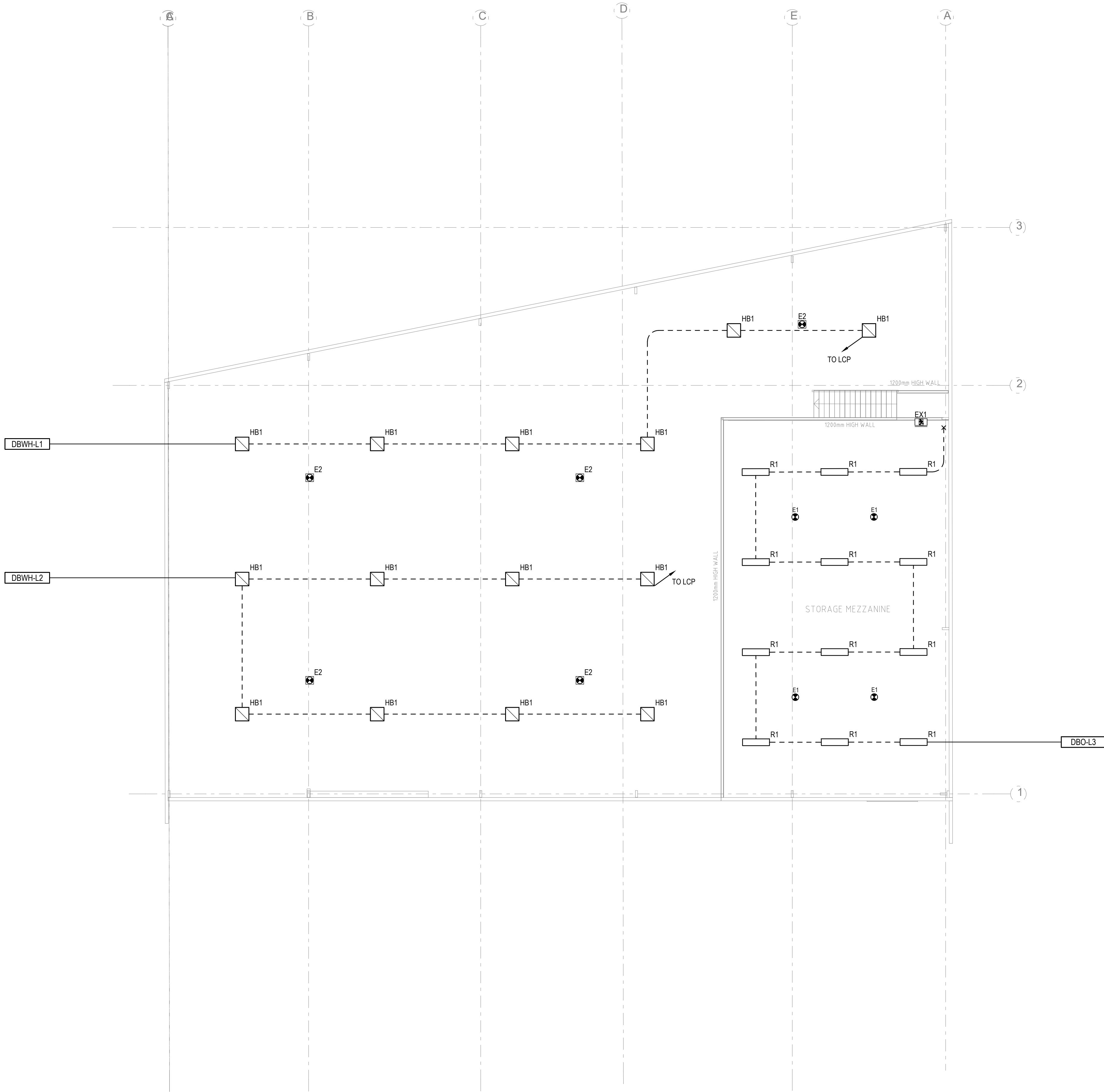
**Sydney:** Suite 1, 401 Pacific Hwy  
Artarmon, NSW 2064  
**Newcastle:** Suite 4, 102 Glebe Road  
The Junction, NSW 2291



info@centricengineers.com.au  
www.centricengineers.com







- GENERAL NOTES:
1. REFER TO DRAWING WH-E000 FOR THE LEGEND.
  2. ALL EQUIPMENT AND ACCESSORIES SHALL BE NEW UNLESS NOTED OTHERWISE.
  3. FINAL POSITION OF ALL EQUIPMENT TO BE DETERMINED ON SITE PRIOR TO INSTALLATION.
  4. ALL SWITCHES SHALL BE INSTALLED AT 1000mm AFFL.
  5. PROVIDE EXIT AND EMERGENCY LIGHTING IN ACCORDANCE WITH NCC REQUIREMENTS AND AS-2293.1.

© CENTRIC BUILDING SERVICES ENGINEERS PTY LTD  
This drawing is the property of Centric Building Services PTY Limited and must not be used, reproduced or copied wholly or in part without the written permission of Centric Building Services PTY Limited. The elements shown on this drawing are prototypical design only. The contractor shall produce workshop drawings for construction purposes. The contractor shall not scale from this drawing and all measurements shall be carried out on site.

P1 30.05.2025 100% FINAL COORDINATION

100%  
ISSUE

ELECTRICAL  
SERVICES

Project North



Client: VINCENT JARVIS

Project Number: 24071  
Drawing Number: E201  
Revision: P1

Drawn by: HR  
Designed by: GA  
Approved by: LR  
Scale: 1:100 @ A1

NEW WAREHOUSE, 36 PLATINUM  
COURT, THRUGOONA, NSW,2640

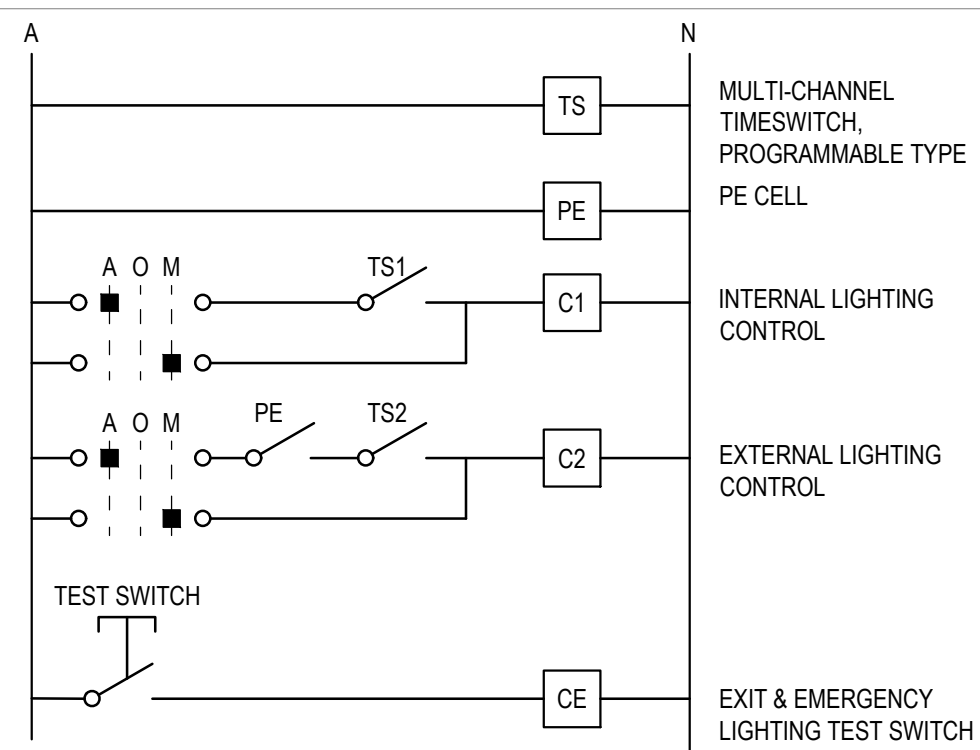
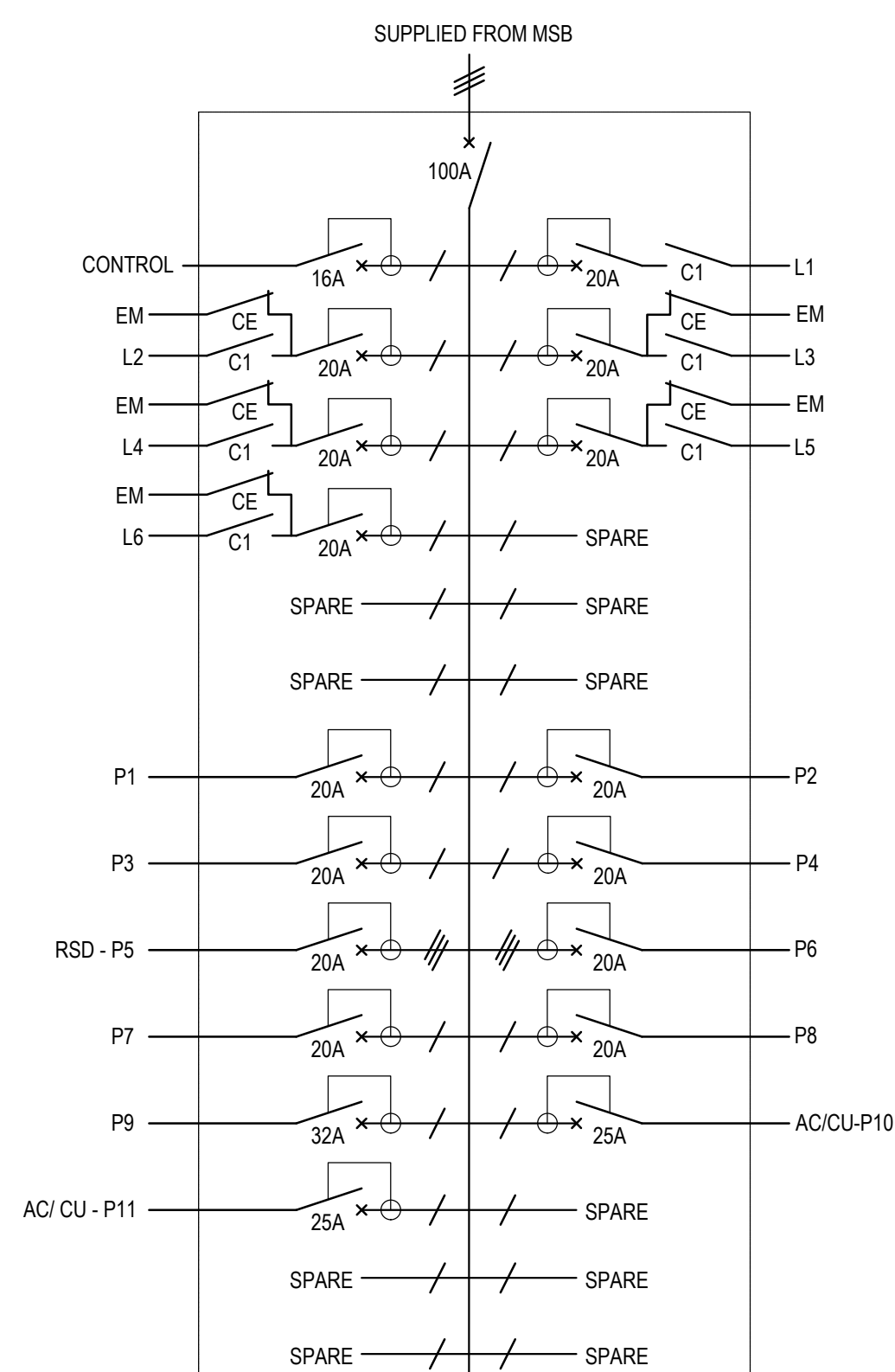
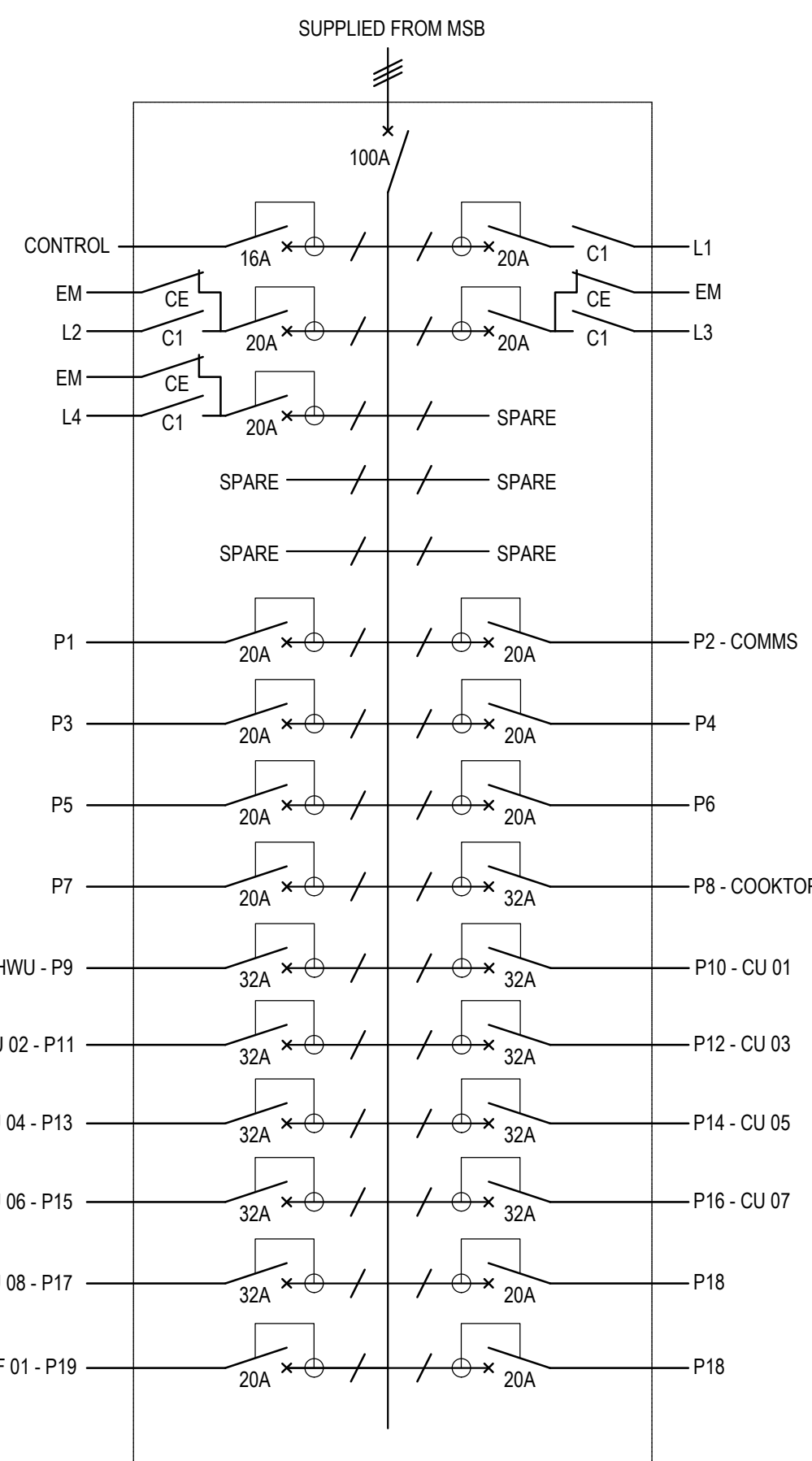
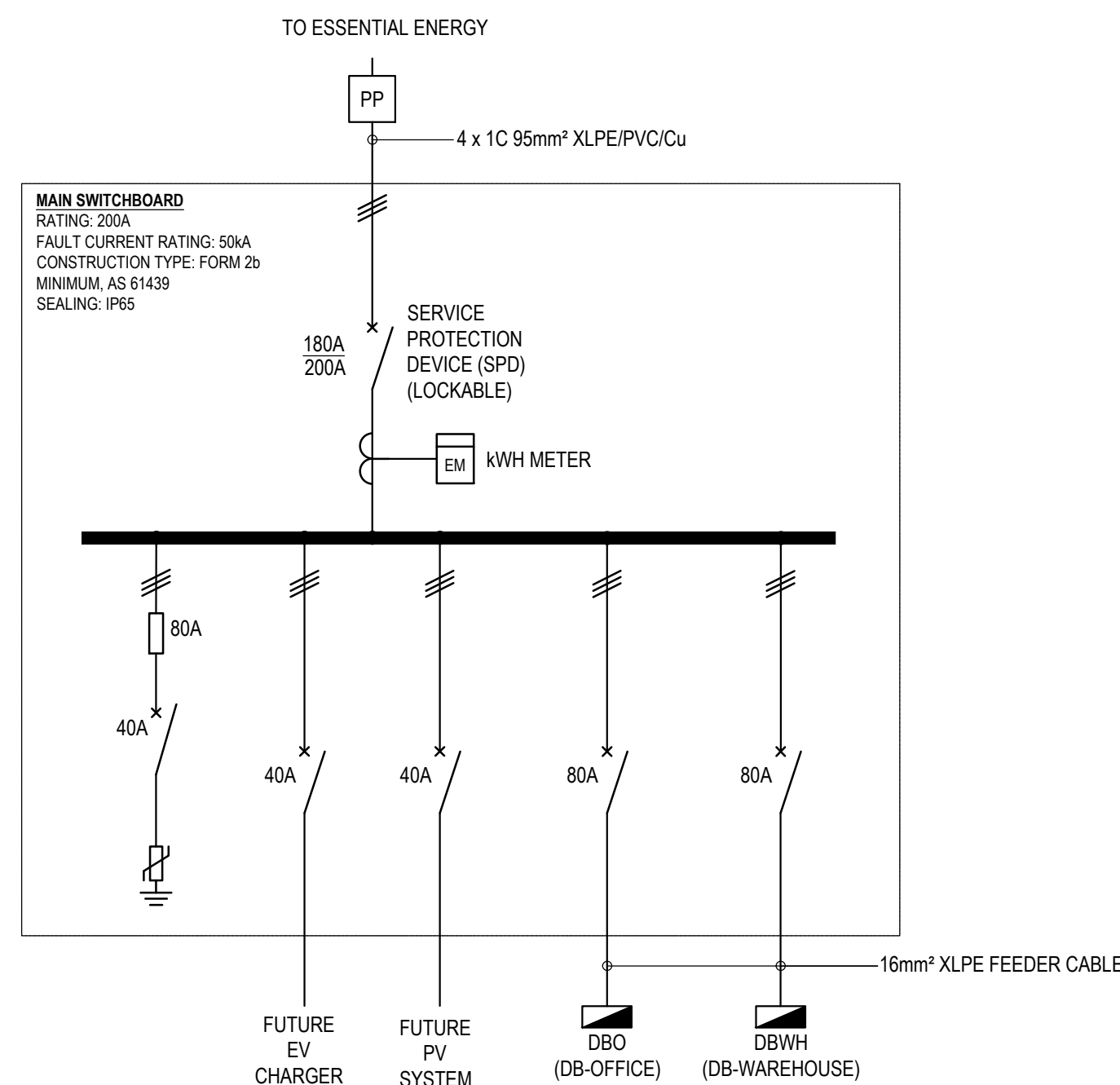
LEVEL M FLOOR PLAN  
LIGHTING LAYOUT

Sydney: (02) 9052 6460  
Newcastle: (02) 9052 6461

Sydney: Suite 1, 401 Pacific Hwy  
Artarmon, NSW 2064  
Newcastle: Suite 4, 102 Glebe Road  
The Junction, NSW 2291

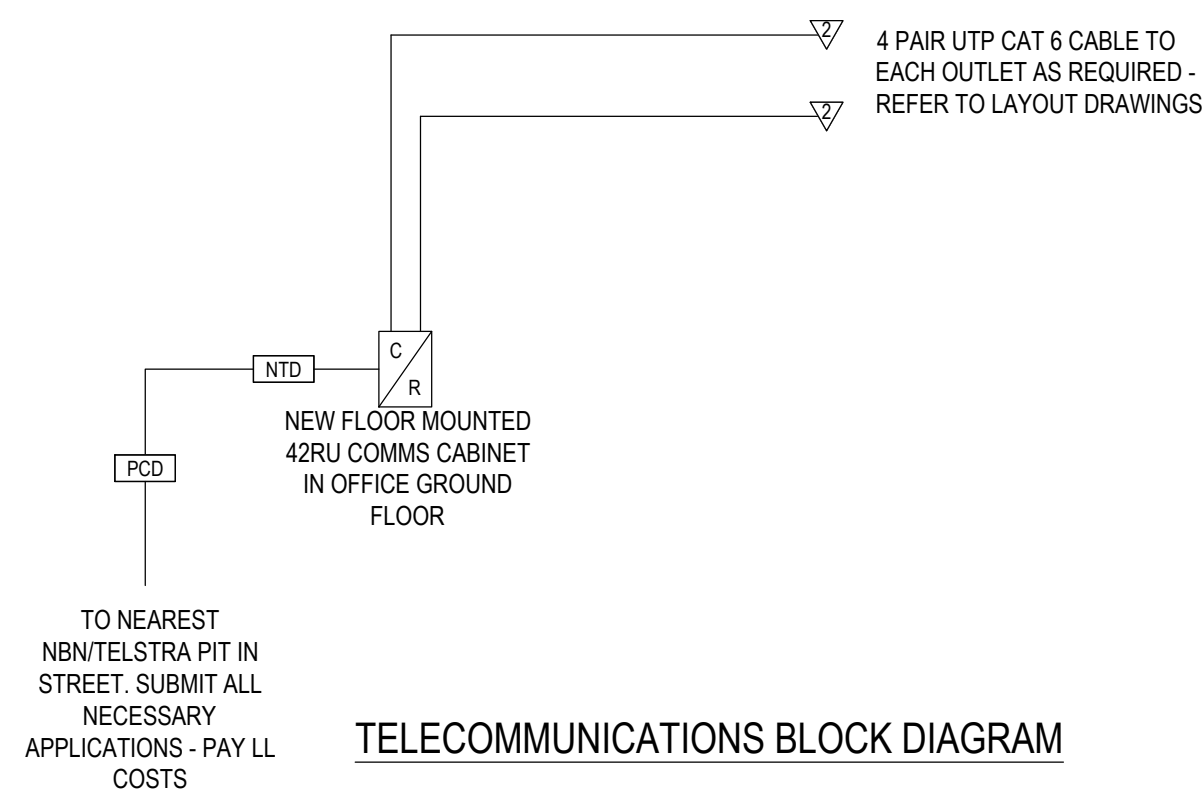
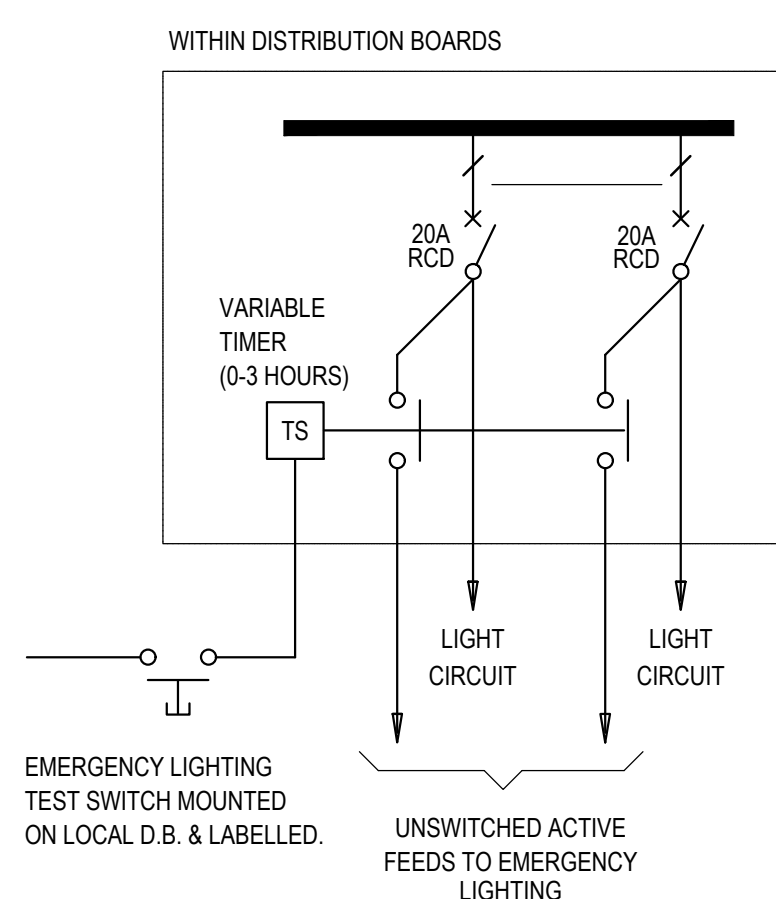
info@centricengineers.com.au  
www.centricengineers.com



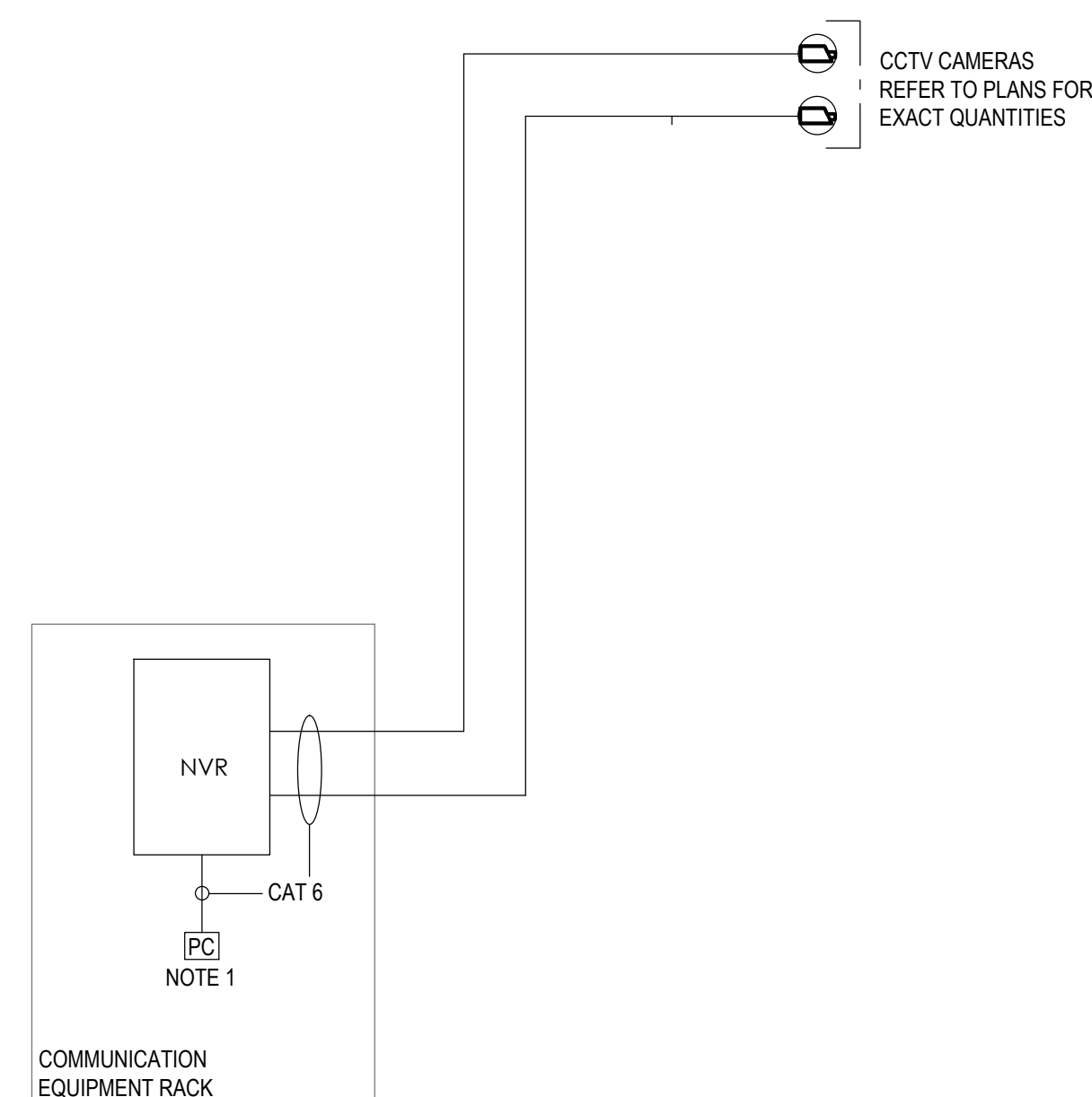


### TYPICAL LIGHTING CONTROL SCHEMATIC

- NOTE:
1. PROVIDE INTERNAL LIGHTING MASTER CONTROL SWITCHES AT ADJACENT TO LOCAL DB.
  2. PROVIDE EXTERNAL LIGHTING MASTER CONTROL SWITCHES AT ADJACENT TO LOCAL DB.
  3. PROVIDE 10 CORE CONTROL CABLING BETWEEN EACH DB FOR LIGHTING CONTROL.



1. PROVIDE A 4 PAIR CAT6 CABLE TO EACH COMMUNICATION OUTLET AS SHOWN ON LAYOUT DRAWINGS.
2. THE SYSTEM SHALL BE INSTALLED BY A CERTIFIED SPECIALIST AND BE IN ACCORDANCE WITH ACMA AUSTRALIAN STANDARDS.
3. PROVIDE COMMUNICATION PATCH PANELS, PATCH LEADS AND ALL ASSOCIATED ACCESSORIES FOR A FULLY FUNCTIONAL SYSTEM,
4. TEST & CERTIFY SYSTEM FOR REQUIRED COMPLIANCE.



## SWITCHBOARD NOTES

1. PROVIDE ALL NEW MAIN AND SUB DISTRIBUTION BOARDS IN ACCORDANCE WITH THE CONTRACT DOCUMENTATION AND AS/NZS 61439.
2. SUBMIT WORKSHOP DRAWINGS OF MAIN SWITCHBOARD AND ALL DISTRIBUTION BOARDS FOR APPROVAL TO PROJECT MANAGEMENT AND SUPPLY AUTHORITY PRIOR TO MANUFACTURING.
3. SWITCHBOARD TO BE SIZED AND CO-ORDINATED TO ENSURE CLEARANCES ARE ACHIEVED IN ACCORDANCE WITH AS3000:2018
4. SWITCHBOARDS ARE TO BE OF FOLDED AND WELDED CONSTRUCTION OF 1.6mm ZINC-ANNEALED STEEL IN THE NOMINATED FORM AND IP RATING. SWITCHBOARD TO BE ELECTRIC ORANGE FINISH - FINAL COLOURS TO BE AGREED WITH ARCHITECT / PROJECT MANAGEMENT.
5. AUTOMATIC PROTECTION DEVICES SHALL BE CO-ORDINATED SO AS THAT A FAULT APPEARING AT A GIVEN POINT IN THE NETWORK IS CLEARED BY THE PROTECTIVE DEVICE INSTALLED IMMEDIATELY UPSTREAM OF THE FAULT AND BY THAT DEVICE ALONE.
6. WHERE BREAKING CAPACITY OF THE DEVICE IS LESS THAN THE PROSPECTIVE SHORT CIRCUIT CURRENT AT THAT POINT THEN THE LET THROUGH ENERGY OF THE UPSTREAM DEVICE SHALL NOT BE GREATER THAN THAT WHICH CAN BE WITHSTOOD BY THE DOWNSTREAM DEVICE.
7. SWITCHBOARDS SHALL BE CONFIGURED SO AS TO BE ACCOMMODATE WITH SPACES ALLOCATED. THE CONTRACTOR SHALL FAMILIARISE THEMSELF WITH ALL SPACES AVAILABLE AND MAKE ALLOWANCES IN HIS TENDER TO CUSTOM MANUFACTURE SWITCHBOARDS SO AS THEY CAN BE ACCOMMODATED WITHIN SPACES AVAILABLE.
8. PROVIDE TRAFFOYLTIE IDENTIFICATION LABELS DISPLAYING THE FOLLOWING INFORMATION IN BLACK LETTERS ON WHITE BACKGROUND.
  - FAULT RATING AND PROSPECTIVE FAULT LEVEL
  - SUPPLY SIZE, LENGTH AND ORIGIN
  - IP AND CURRENT RATING
  - MANUFACTURER DETAILS
9. PROVIDE SUITABLE LABELING TO COMPLY WITH THE NSW SERVICES AND INSTALLATION RULES AND SUPPLY AUTHORITY ENERGY REQUIREMENTS.
10. CO-ORDINATE LOCATION OF CONDUITS AND SWITCHBOARD WITH STRUCTURE, STORMWATER, HYDRAULIC AND MAIN SWITCHBOARD LAYOUT.
11. MUST PROVIDE AUTHORITY DIGITAL METERING SYSTEM TO MEASURE AND DISPLAYING CURRENT, CURRENT DEMAND, MAXIMUM DEMAND AND VOLTAGE. ALLOW FOR NECESSARY POWER SUPPLY TO DIGITAL METER.
12. ALL CABLES INSTALLED NO CABLE GROUPING DERATING CAN BE AVOIDED TO AS3008.
13. ENSURE THE ENTIRE BUILDING LOAD IS EVENLY BALANCED OVER THE THREE PHASES. CIRCUIT SCHEDULES INCLUDED ARE INDICATIVE ONLY AND DO NOT ACCOUNT FOR BALANCING OF THE SITE/BUILDING LOAD.

## GENERAL NOTES DB SLD'S

1. DISTRIBUTION BOARD TO BE PROVIDED COMPLETE WITH ALL NECESSARY CONTROL/SUBMIT SHOP DRAWINGS FOR REVIEW PRIOR TO MANUFACTURING.
2. UNLESS NOTED OTHERWISE DISTRIBUTION BOARDS ARE TO BE WALL MOUNTED AND SHALL BE SIZED TO ENSURE ARE CLEARANCES ARE ACHIEVED AS PER AS/NZS3000:2018.
3. CIRCUITS ARE SHOWN INDICATIVE ONLY - FINAL CIRCUIT ARRANGEMENT TO BE DOCUMENTED IN AS-BUILT DRAWINGS.
4. PROVIDE ISOLATORS FOR OTHER TRADES SUCH AS HYDRAULIC AND MECHANICAL, CO-ORDINATE FINAL EQUIPMENT LOCATIONS PRIOR TO INSTALLATION.
5. DISTRIBUTION BOARDS ARE TO BE PROVIDED WITH A MINIMUM 30% SPARE CAPACITY FOR FUTURE USE.
6. PROVIDE ALL NECESSARY LABELING AND CIRCUIT SCHEDULES AS PER AS/NZS3000:2018.
7. DISTRIBUTION BOARD TO BE INSTALLED IN ACCORDANCE WITH AS 3000 CLAUSE 2.10, AS 61439 & AS 3013.



**CENTRIC**  
Building Services Engineers

**© CENTRIC BUILDING SERVICES ENGINEERS PTY LTD**  
This drawing is the property of Centric Building Services PTY Limited and must not be used, reproduced or copied wholly or in part without the written permission of Centric Building Services PTY Limited. The elements shown on this drawing are prototypical design only. The contractor shall produce workshop drawings for construction purposes. The contractor shall not scale from this drawing and all measurements shall be carried out on site.

P1 30.05.2025 100% FINAL COORDINATION

**100%  
ISSUE**

## ELECTRICAL SERVICES

## Project North

Client:  
Architect: VINCENT JARVIS

Project Number: 24071  
Drawing Number: E300  
Revision: P1

Drawn by: HR  
Designed by: GA  
Approved by: LR  
Scale: NTS @ A1

NEW WAREHOUSE, 36 PLATINUM COURT, THRUGOONA, NSW, 2640

ELECTRICAL SCHEMATIC

## ELECTRICAL SCHEMATIC

Sydney: (02) 9052 6460  
Newcastle: (02) 9052 6461

**Sydney:** Suite 1, 401 Pacific Hwy  
Artarmon, NSW 2064  
**Newcastle:** Suite 4, 102 Glebe Road  
The Junction, NSW 2291

  
info@centricengineers.com.au  
www.centricengineers.com





## DOCUMENT REGISTER & TRANSMITTAL NOTICE



Sydney: Suite 1, 401 Pacific Hwy, Artarmon, NSW 2064  
Newcastle: Suite 4, 102 Glebe Road, The Junction, NSW, 2291  
Sydney: +61 - (02) 9052 6460 | Newcastle: +61 - (02) 9052 6461

[info@centricengineers.com.au](mailto:info@centricengineers.com.au)  
[www.centricengineers.com.au](http://www.centricengineers.com.au)

**Address: 36 PLATINUM COURT THRUGOONA NSW 2640**

**Discipline: Electrical**

[illegible]

**Job Title: NEW WAREHOUSE**

**Address: 36 PLATINUM COURT THRU GOONA NSW 2640**

**Job No: 24071**

## Discipline: Electrical

[illegible]