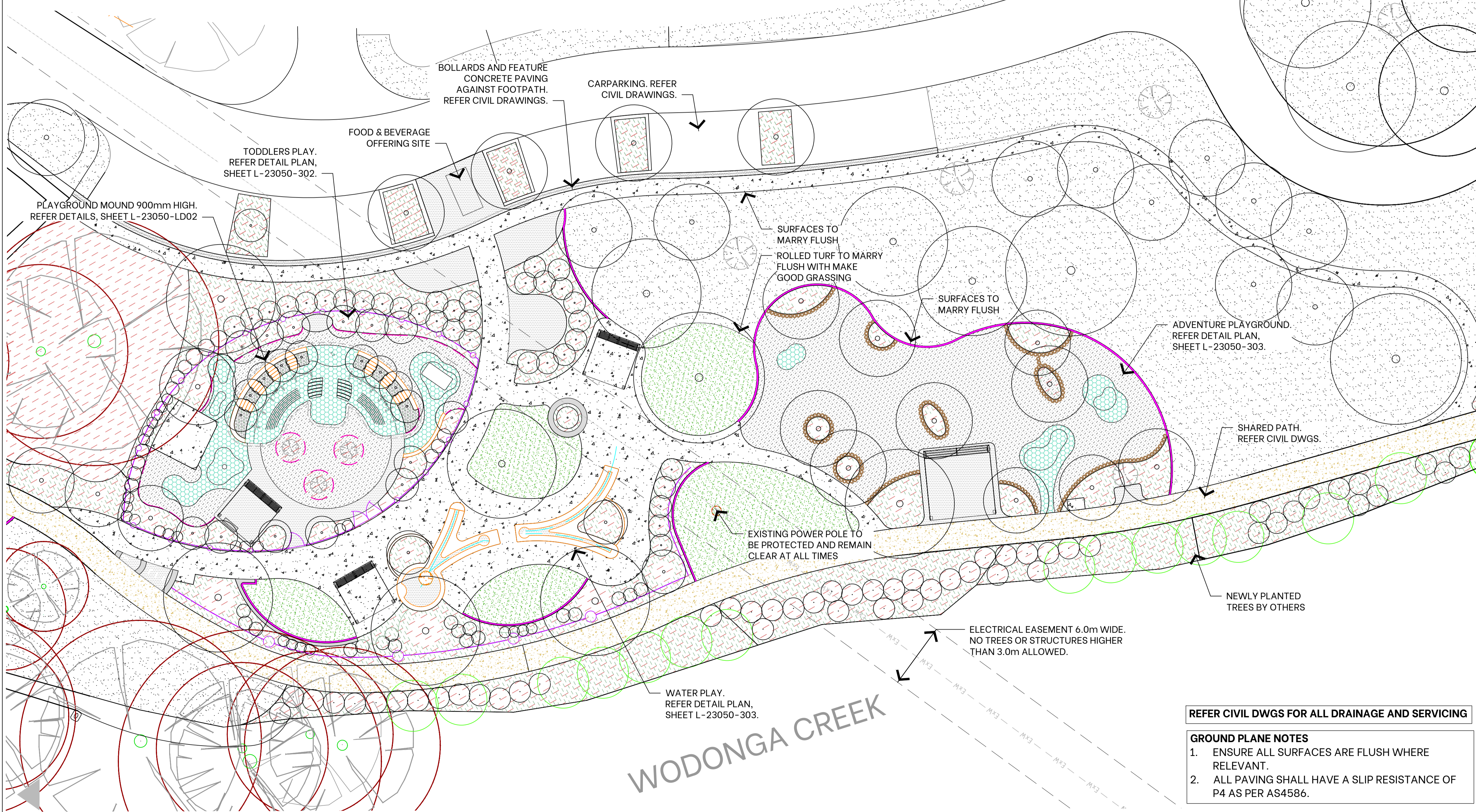


1 LINCOLN CAUSEWAY / DIAMOND PARK - KEY PLAN
1:1,500 @ A1



2 PLAYGROUND LANDSCAPE PLAN
1:200 @ A1

LEGEND

EXISTING

- TREES to be protected and retained
- TREE PROTECTION ZONE (TPZ) Refer Tree Protection Notes on Cover Page

PROPOSED

- TREES Refer Planting Plan
- MULCHED GARDEN BEDS Refer Details and Specification
- MULCH ONLY - NO EXCAVATION UNLESS APPROVED Refer Details and Specification
- IRRIGATED ROLLED TURF Refer Details and Specification
- MAKE GOOD GRASS (SEEDING) Refer Details and Specification
- ROOT BARRIER (900mm deep) Refer Specification
- PLAYGROUND FENCE Refer Details and Specification
- ORGANIC PLAYGROUND SOFTFALL Refer Details and Specification
- CUT LOG STEPPERS (customised) Refer Playground Details
- RUBBER PLAYGROUND SURFACING Refer Details and Specification
- JUTE MAT ON PLAYGROUND BANK Refer Details and Specification
- CONCRETE EDGING Refer Civil Drawings
- CONCRETE PAVING Refer Civil Drawings
- FEATURE CONCRETE PAVING Refer Civil Drawings
- CONCRETE WALLS - IN SITU 450mmH Refer Civil Drawings
- MUDSTONE EDGING Refer Civil Drawings

C:\Users\Fiona\Documents\2023\23050 Wodonga Creek Activation\LAND - 23050_PLAYGROUND.Mxd 2024-11-28 AM

| Revision | Revision Date | Revision Description | Issued By |
|----------|---------------|-------------------------------------------|-----------|
| A | 25/11/2025 | PRELIMINARY DRAFT TENDER ISSUE FOR REVIEW | TMW |
| B | 01/05/2026 | ISSUE FOR TENDER | TMW |
| C | 18/05/2026 | REISSUE FOR TENDER | FIS |

yonder.

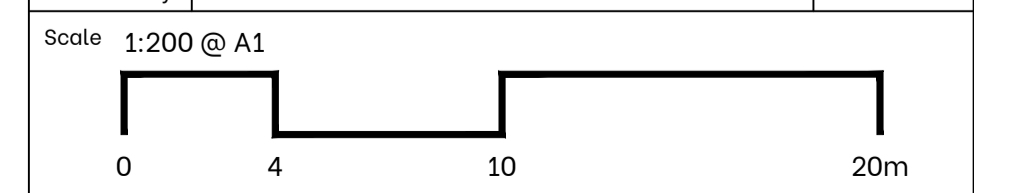
PO Box 1198 Albury NSW 2640
M 0423 811308
E fiona@yonderstudio.com.au
www.yonderstudio.com.au
ABN 68 437 343 209

Client **WOODWARD LAND AND CIVIL**
Project **WODONGA CREEK ACTIVATION PROJECT LANDSCAPE WORKS**

Sheet Title **SURFACES AND FINISHES - PLAYGROUND**

Drawing No **L-23050-201** **C**

Designed By FS/TW
Drawn By TMW
Reviewed By FS

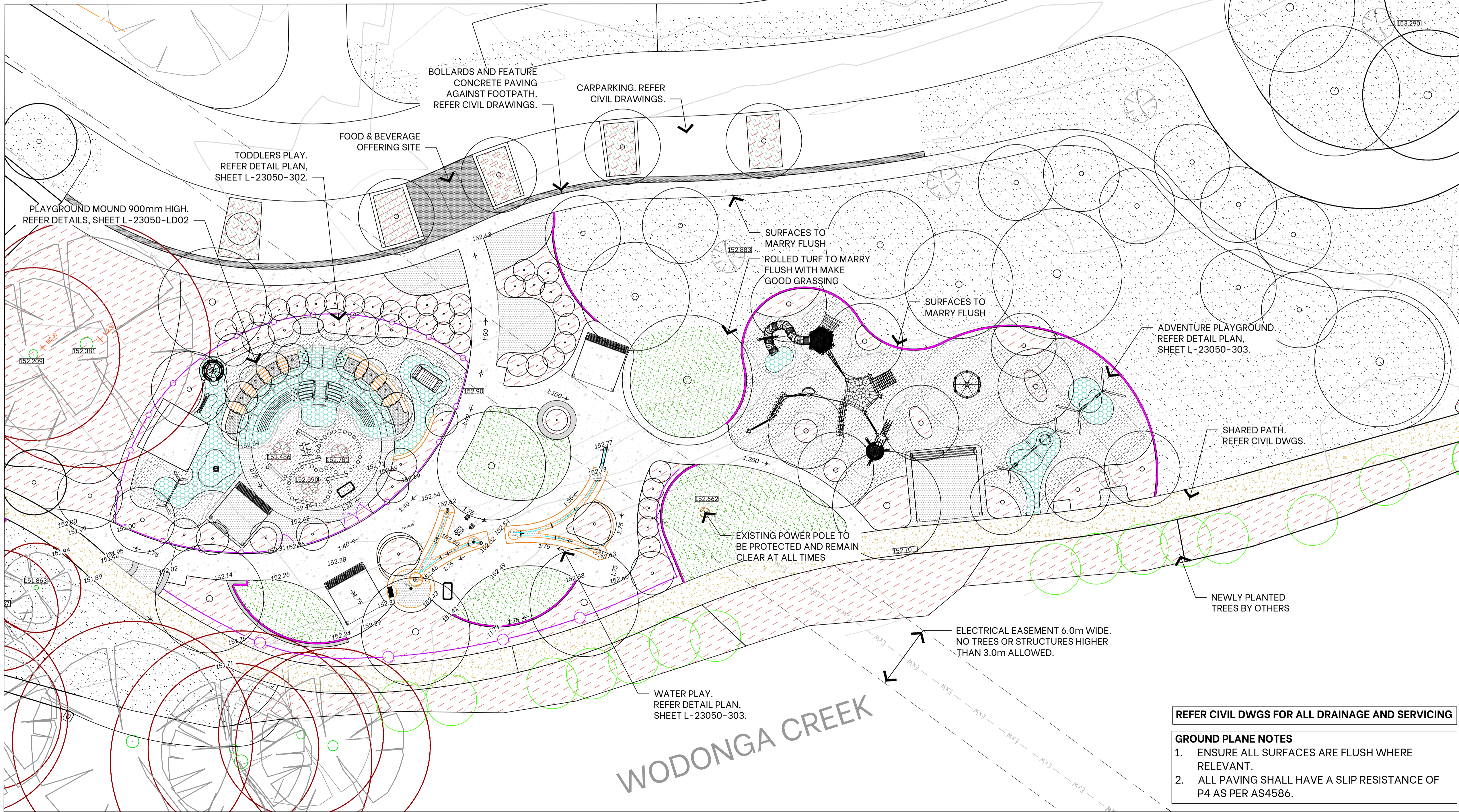


REFER CIVIL DWGS FOR ALL DRAINAGE AND SERVICING

- GROUND PLANE NOTES**
- ENSURE ALL SURFACES ARE FLUSH WHERE RELEVANT.
 - ALL PAVING SHALL HAVE A SLIP RESISTANCE OF P4 AS PER AS4586.



1 LINCOLN CAUSEWAY / DIAMOND PARK - KEY PLAN
1:1,500 @ A1



2 PLAYGROUND LANDSCAPE PLAN
1:200 @ A1

LEGEND

EXISTING

- TREES to be protected and retained
- TREE PROTECTION ZONE (TPZ) Refer Tree Protection Notes on Cover Page
- LEVELS TO BE RETAINED
- CONTOURS

PROPOSED

- LEVELS
- GRADES
- FENCE Refer Details and Specification
- ORGANIC PLAYGROUND SOFTFALL Refer Details and Specification
- RUBBER PLAYGROUND SURFACING Refer Details and Specification
- JUTE MAT ON PLAYGROUND BANK Refer Details and Specification
- MULCHED GARDEN BEDS Refer Details and Specification
- CONCRETE EDGING Refer Civil Drawings
- CONCRETE PAVING Refer Civil Drawings
- FEATURE CONCRETE PAVING Refer Civil Drawings
- CONCRETE WALLS - INSITU 450mmH Refer Civil Drawings
- MUDSTONE EDGING Refer Civil Drawings

| Revision | Revision Date | Revision Description | Issued By |
|----------|---------------|-------------------------------------------|-----------|
| A | 25/11/2025 | PRELIMINARY DRAFT TENDER ISSUE FOR REVIEW | TMW |
| B | 01/05/2026 | ISSUE FOR TENDER | TMW |
| C | 18/05/2026 | REISSUE FOR TENDER | FIS |

yonder.

PO Box 1198 Albury NSW 2640
M 0423 811306
E fiona@yonderstudio.com.au
www.yonderstudio.com.au
ABN 68 437 343 209

Client: **WOODWARD LAND AND CIVIL**

Project: **WODONGA CREEK ACTIVATION PROJECT LANDSCAPE WORKS**

Sheet Title: **GRADING AND LEVELS PLAN - PLAYGROUND**

Drawing No: **L-23050-202** **C**

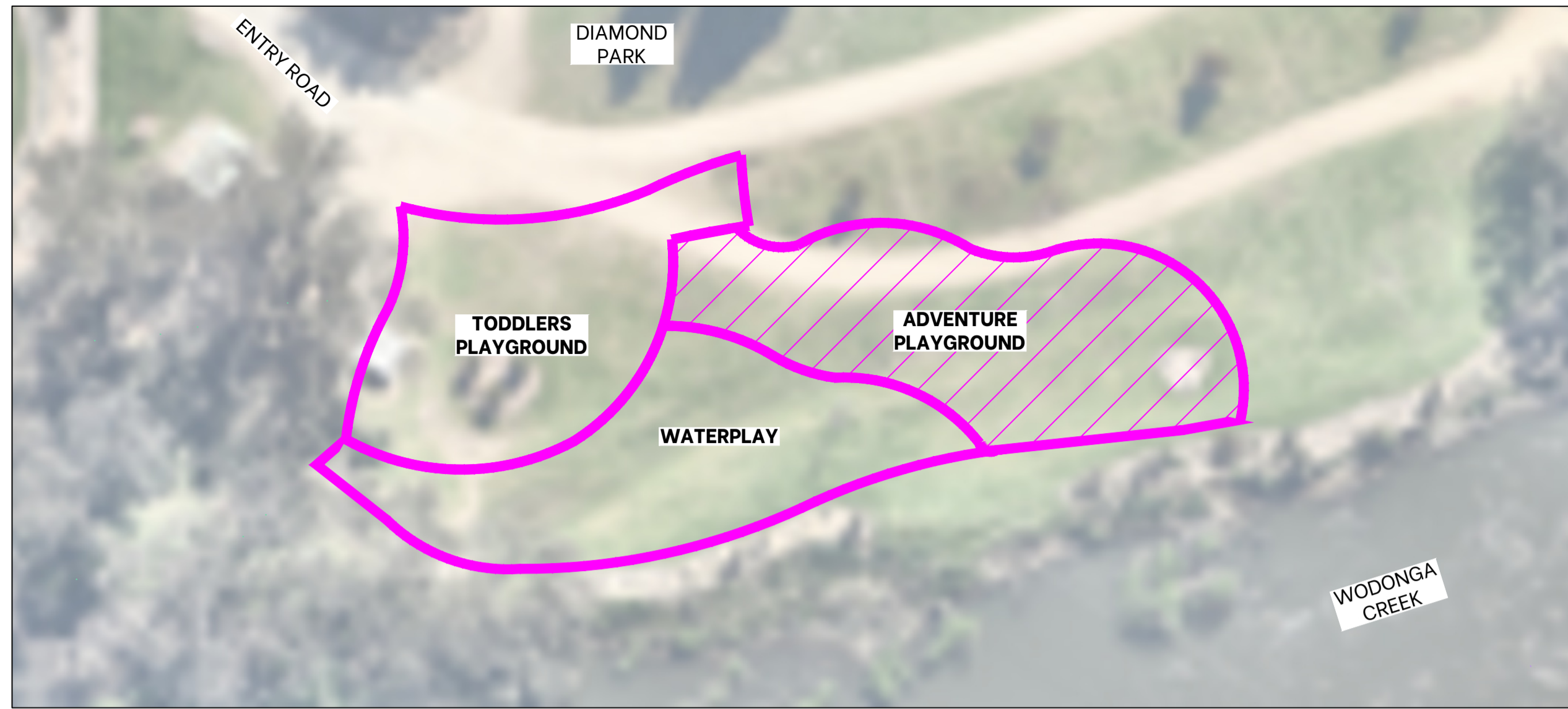
Designed By: FS/TW
Drawn By: TMW
Reviewed By: FS

Scale: 1:200 @ A1

REFER CIVIL DWGS FOR ALL DRAINAGE AND SERVICING

GROUND PLANE NOTES

- ENSURE ALL SURFACES ARE FLUSH WHERE RELEVANT.
- ALL PAVING SHALL HAVE A SLIP RESISTANCE OF P4 AS PER AS4586.



ADVENTURE PLAY - FURNITURE SCHEDULE

| # | EQUIPMENT TYPE | SUGGESTED SUPPLIER | MODEL / CODE | FINISH | DIMENSIONS | QTY |
|-----|-----------------------------------------------------------------------------|--------------------|----------------------------------------|---------------------------------------------------------------------------|----------------------------------|-----|
| F1 | LONG PICNIC TABLE SETTING WHEELCHAIR ACCESSIBLE ONE END | GX OUTDOORS | MODA TABLE SETTING | FRAME: PC COLOUR Mamba BATTENS: White Ash Silver | TABLE 3.0mL WITH BENCH 2.8mL | 1 |
| F2 | LONG PICNIC TABLE SETTING WITH WHEELCHAIR ACCESS ONE END AND ONE SIDE | GX OUTDOORS | MODA TABLE SETTING | FRAME: PC COLOUR Mamba BATTENS: White Ash Silver | TABLE 3.0mL, WITH BENCH 2.8mL | 1 |
| F3 | SEAT WITH BACK-REST AND ARM- REST | GX OUTDOORS | MODA PARK SEAT | FRAME: PC COLOUR Mamba BATTENS: White Ash Silver | 2m LONG | 2 |
| F4 | SHORT PICNIC TABLE SETTING WHEELCHAIR ACCESSIBLE ONE END | GX OUTDOORS | MODA TABLE SETTING | FRAME: PC COLOUR Mamba BATTENS: White Ash Silver | TABLE 2.0mL, WITH BENCH 1.8mL | 3 |
| F5 | PLATFORM SEAT | GX OUTDOORS | CITISTYLE PLATFORM SEAT | FRAME: PC COLOUR Mamba BATTENS: White Ash Silver | 2.0 x 2.0 x 0.45H | 1 |
| F8 | ELECTRIC BARBECUE | GX OUTDOORS | ELITE BBQ | PC COLOUR Mamba | SINGLE 1180mm x 950mm | 1 |
| F9 | BIN ENCLOSURE | GX OUTDOORS | INTEGRA EX BIN ENCLOSURE | HOOD + LID FINISH: PC COLOUR Mamba BODY FINISH: PC COLOUR Sable Silver | DOUBLE | 2 |
| F10 | BENCH SEAT | GX OUTDOORS | MODA PARK SEAT | FRAME: PC COLOUR Mamba BATTENS: White Ash Silver | 1.8m LONG | 4 |
| S3 | SHELTER | GX OUTDOORS | REDGUM with guttering + solar light | FRAME: PC COLOUR Sable Silver FRONTSLATS PC COLOUR Serpentine | 4.0m | 1 |
| S4 | SHELTER | GX OUTDOORS | REDGUM with guttering + solar light | FRAME: PC COLOUR Sable Silver FRONTSLATS PC COLOUR Serpentine | 6.0m | 1 |

1 KEY PLAN

1:2000 @ A1

| # | EQUIPMENT TYPE | COLOUR/MODIFICATIONS | SUGGESTED SUPPLIER | MODEL / CODE | QTY |
|----|----------------------------|------------------------------------------------------------------------|-------------------------------|--------------|-----|
| P1 | POSSUMS' HANGOUT | GREEN SLIDE/GREY+GREEN PANELS MODIFIED DESIGN. Refer Specification. | LYPA | L025907 | 1 |
| P2 | EXTRA HIGH SWING SPECIAL | | URBANIA (RICHTER SPIELGERATE) | 7.14020 | 1 |
| P3 | MULTI SURFACE TRIPLE SWING | | URBANIA (RICHTER SPIELGERATE) | 6.14820 | 1 |
| P4 | RING SCALES | | URBANIA (RICHTER SPIELGERATE) | 6.10300 | 1 |

SET OUT OF PLAYGROUND EQUIPMENT

SET OUT OF THE PLAYGROUND EQUIPMENT SHALL BE CARRIED IN ACCORDANCE WITH THE DRAWINGS AND THE PLAYGROUND MANUFACTURER'S REQUIREMENTS AND BE APPROVED BY THE PROJECT MANAGER/CLIENT PRIOR TO INSTALLATION.

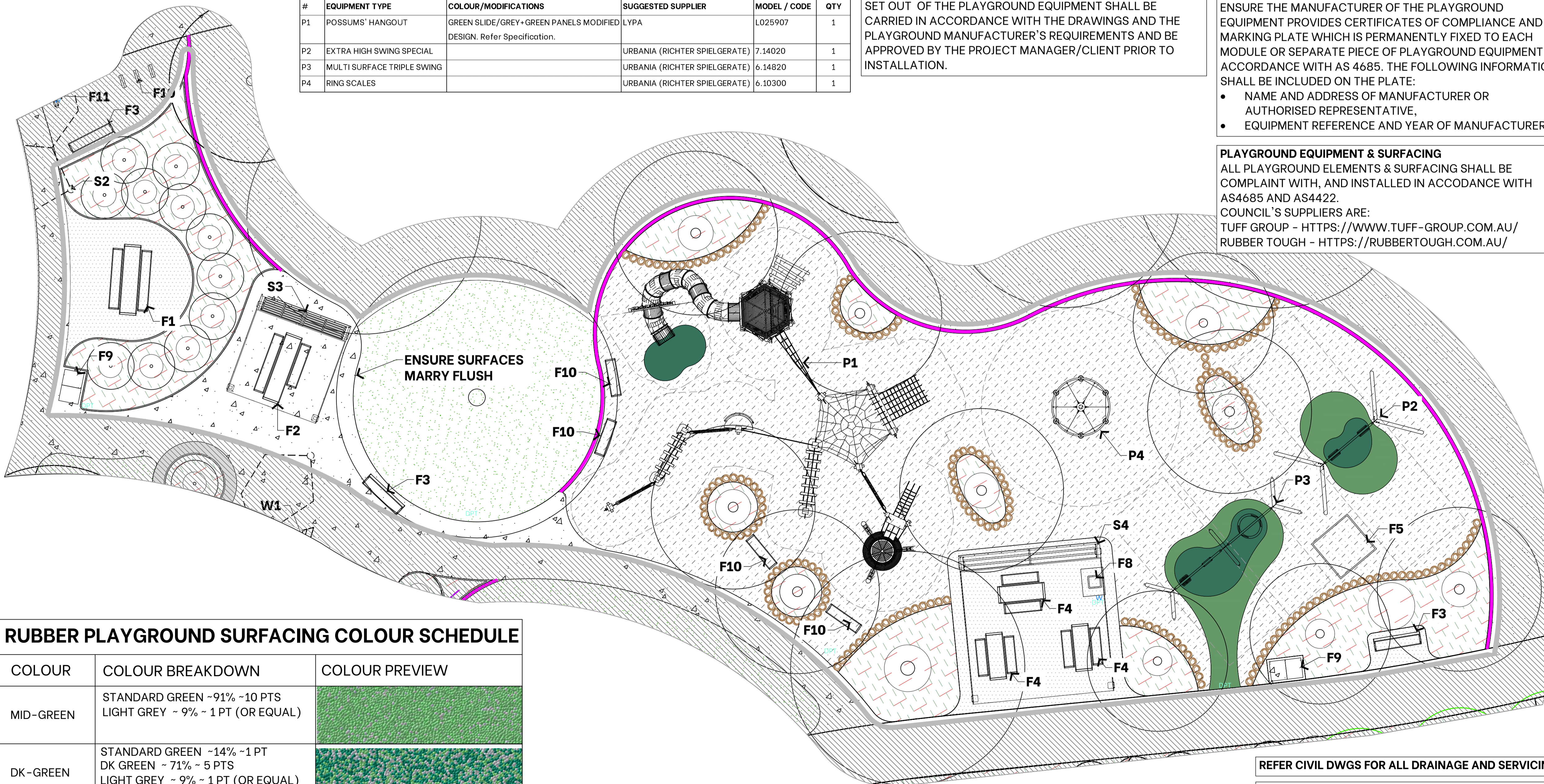
PLAYGROUND EQUIPMENT MARKING NOTES

ENSURE THE MANUFACTURER OF THE PLAYGROUND EQUIPMENT PROVIDES CERTIFICATES OF COMPLIANCE AND A MARKING PLATE WHICH IS PERMANENTLY FIXED TO EACH MODULE OR SEPARATE PIECE OF PLAYGROUND EQUIPMENT IN ACCORDANCE WITH AS 4685. THE FOLLOWING INFORMATION SHALL BE INCLUDED ON THE PLATE:

- NAME AND ADDRESS OF MANUFACTURER OR AUTHORISED REPRESENTATIVE,
- EQUIPMENT REFERENCE AND YEAR OF MANUFACTURER.

PLAYGROUND EQUIPMENT & SURFACING

ALL PLAYGROUND ELEMENTS & SURFACING SHALL BE COMPLAINT WITH, AND INSTALLED IN ACCORDANCE WITH AS4685 AND AS4422.
COUNCIL'S SUPPLIERS ARE:
TUFF GROUP - [HTTPS://WWW.TUFF-GROUP.COM.AU/](https://www.tuff-group.com.au/)
RUBBER TOUGH - [HTTPS://RUBBERTOUGH.COM.AU/](https://rubbertough.com.au/)



RUBBER PLAYGROUND SURFACING COLOUR SCHEDULE

| COLOUR | COLOUR BREAKDOWN | COLOUR PREVIEW |
|-----------|------------------------------------------------------------------------------------------|----------------|
| MID-GREEN | STANDARD GREEN ~91% ~10 PTS LIGHT GREY ~ 9% ~ 1 PT (OR EQUAL) | |
| DK-GREEN | STANDARD GREEN ~14% ~1 PT DK GREEN ~ 71% ~ 5 PTS LIGHT GREY ~ 9% ~ 1 PT (OR EQUAL) | |

RUBBER WEAR LAYER SHALL CONSIST OF AUSTRALIAN MADE EPDM. CERTIFICATE OF AUTHENTICITY REQUIRED.

2 ADVENTURE PLAY PLAYGROUND
LANDSCAPE PLAN 1:100 @ A1

REFER CIVIL DWGS FOR ALL DRAINAGE AND SERVICING

GROUND PLANE NOTES

- ENSURE ALL SURFACES ARE FLUSH WHERE RELEVANT.
- ALL PAVING SHALL HAVE A SLIP RESISTANCE OF P4 AS PER AS4586.

LEGEND

EXISTING

- TREES to be protected and retained
- TREE PROTECTION ZONE (TPZ) Refer Tree Protection Notes on Cover Page

PROPOSED

- TREES Refer plant schedule
- MULCHED GARDEN BEDS Refer Details and Specification
- MULCH ONLY - NO EXCAVATION UNLESS APPROVED. Refer Details and Specification
- IRRIGATED ROLLED TURF (pop-up sprinklers) Refer Details and Specification
- ORGANIC PLAYGROUND SOFTFALL Refer Details and Specification
- RUBBER PLAYGROUND SURFACING Refer Details and Specification
- PLAYGROUND EQUIPMENT with free space/fall zone areas. Refer Manufacturer's installation requirements for dimensions
- PLAYGROUND EQUIPMENT Refer Adventure Play Playground Equipment Schedule
- FURNITURE Refer Furniture Schedule
- CUT LOG STEPPERS (customised) Refer Playground Details
- CONCRETE EDGING Refer Civil Drawings
- CONCRETE PAVING Refer Civil Drawings
- FEATURE CONCRETE PAVING Refer Civil Drawings

| Revision | Revision Date | Revision Description | Issued By |
|----------|---------------|-------------------------------------------|-----------|
| A | 25/11/2025 | PRELIMINARY DRAFT TENDER ISSUE FOR REVIEW | TMW |
| B | 01/05/2026 | ISSUE FOR TENDER | TMW |
| C | 18/05/2026 | REISSUE FOR TENDER | FIS |

yonder.

PO Box 1198 Albury NSW 2640
M 0423 811308
E fiona@yonderstudio.com.au
www.yonderstudio.com.au
ABN 68 437 343 209

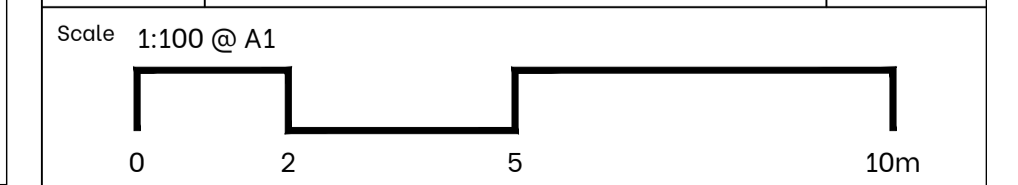
Client: WOODWARD LAND AND CIVIL

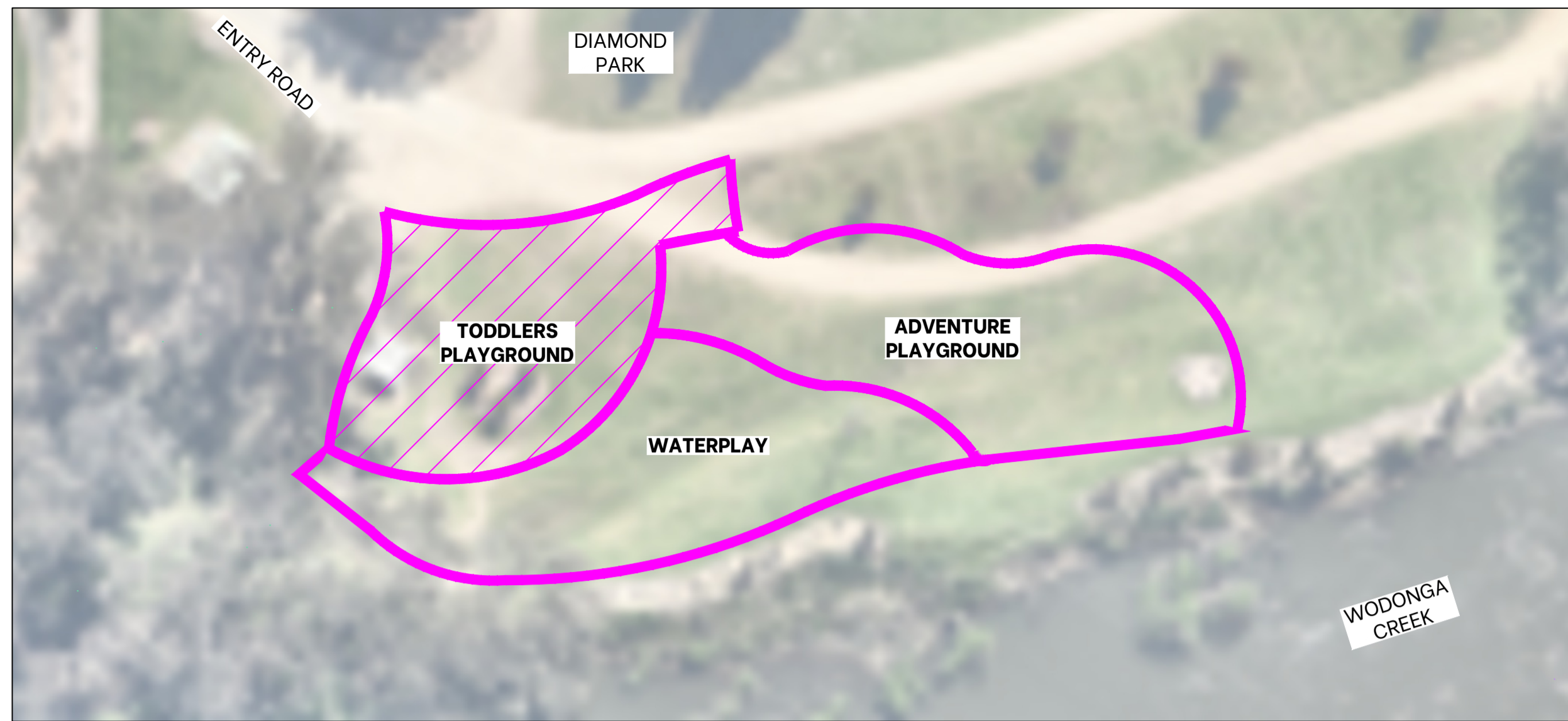
Project: WODONGA CREEK ACTIVATION PROJECT
LANDSCAPE WORKS

Sheet Title: **DETAIL PLAN - ADVENTURE PLAYGROUND**

Drawing No: L-23050-301 C

Designed By: FS/TW
Drawn By: TMW
Reviewed By: FS





1 KEY PLAN

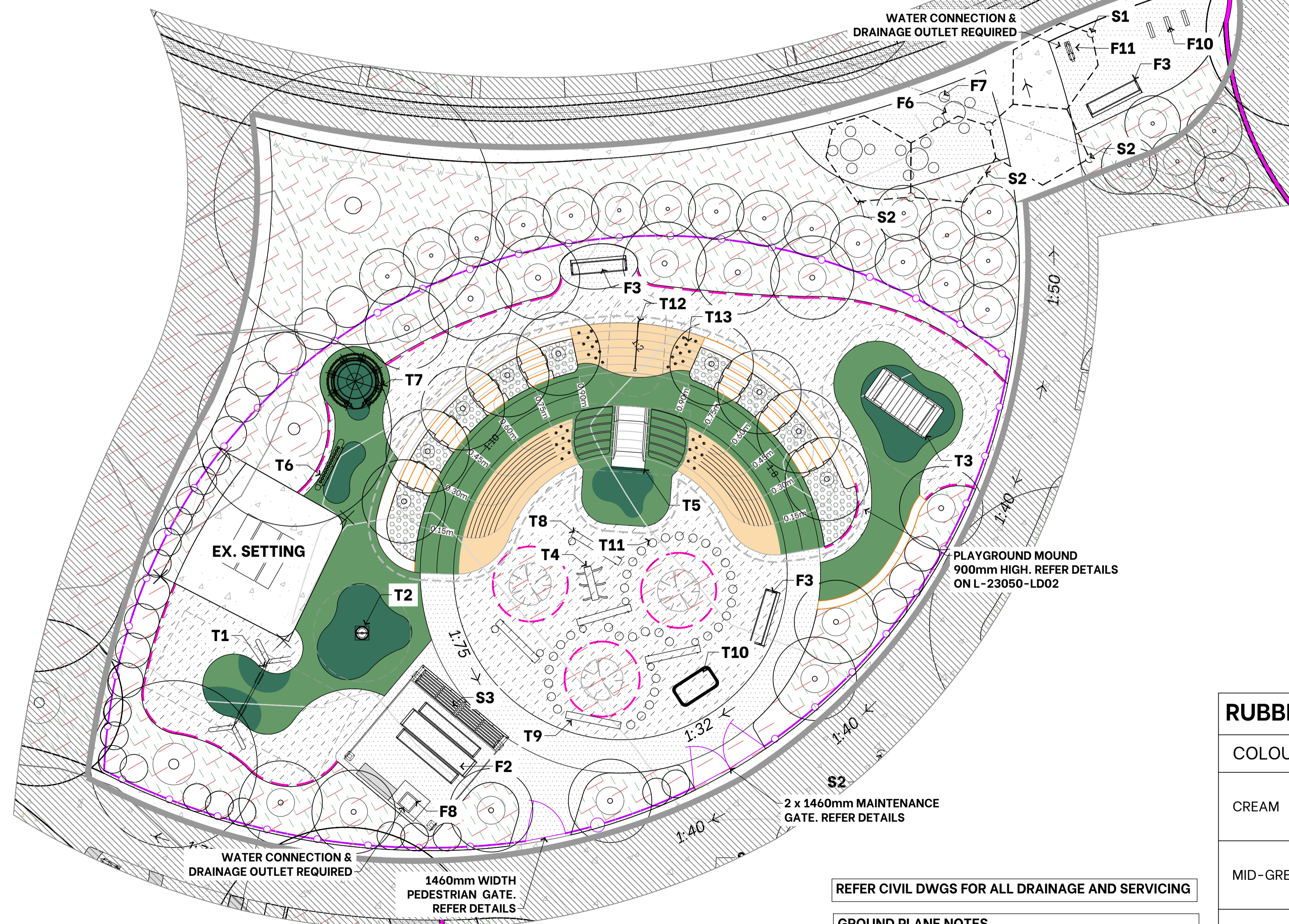
1:2000 @ A1

TODDLERS' PLAYGROUND - FURNITURE SCHEDULE

| # | EQUIPMENT TYPE | SUGGESTED SUPPLIER | MODEL / CODE | FINISH | DIMENSIONS | QTY |
|-----|----------------------------------------------------------|--------------------|-------------------------------------|-------------------------------------------------------------------------------------|---------------------------------|-----|
| F2 | LONG PICNIC TABLE SETTING WITH WHEELCHAIR ACCESS ONE END | GX OUTDOORS | MODA TABLE SETTING | FRAME: PC COLOUR Mamba BATTENS: White Ash Silver | TABLE 3.0mL, WITH BENCHES 2.8mL | 1 |
| F3 | SEAT WITH BACK-REST AND ARM-REST | GX OUTDOORS | MODA PARK SEAT | FRAME: PC COLOUR Mamba BATTENS: White Ash Silver | 2m LONG | 3 |
| F8 | ELECTRIC BARBECUE | GX OUTDOORS | ELITE BBQ | PC COLOUR Mamba | SINGLE 1180mm x 950mm | 1 |
| F6 | ROUND TABLE | GX OUTDOORS | RT-SM-DEL-002 | PC COLOUR Mamba | 800mm DIA | 3 |
| F7 | SINGLE STOOL | GX OUTDOORS | RS-SM-DEL-001 | PC COLOUR 4xMamba, 4xSerpentine, 4xMistletoe | 380mm DIA | 12 |
| F10 | BIKE RACK | GX OUTDOORS | MODA BIKE RACK | FRAME: PC COLOUR Sable Silver INFILL PANEL: Mamba' | | 3 |
| F11 | DRINKING FOUNTAIN | GX OUTDOORS | AKUNA DRINKING FOUNTAIN | BODY+BASE PLATE+ARM: PC COLOUR Sable Silver FRONT+REAR FASCIA: Mamba | INCLUDES WATER FILL FACILITY | 1 |
| S1 | SHELTER | GX OUTDOORS | PANDANUS | FRAME: PC COLOUR Sable Silver ROOF: PC COLOUR Mamba | LONG ARM | 1 |
| S2 | SHELTER | GX OUTDOORS | PANDANUS | FRAME: PC COLOUR Sable Silver ROOF: PC COLOUR 1xMamba, 1xSerpentine, 1xMistletoe | SHORT ARM | 3 |
| S3 | SHELTER | GX OUTDOORS | REDGUM with guttering + solar light | FRAME: PC COLOUR Sable Silver FRONTSLATS PC COLOUR Serpentine | 4.0m | 1 |

TODDLERS' PLAYGROUND - PLAYGROUND EQUIPMENT SCHEDULE

| # | EQUIPMENT TYPE | SUGGESTED SUPPLIER | MODEL / CODE | QTY |
|-----|--------------------------------------------------------|-------------------------------|--------------|-----|
| T1 | TODDLER TWIN SWINGS incl 1xbaby swing | URBANIA (RICHTER SPIELGERATE) | 6.12720 | 1 |
| T2 | SMALL SPINNER | URBANIA (RICHTER SPIELGERATE) | 6.26400 | 1 |
| T3 | DUAL ROCKER | LYPA | L013210 | 1 |
| T4 | BEASTIE | LYPA | L014100 | 1 |
| T5 | SINGLE CONCRETE SLIDE (900mm) | LYPA | L000203 | 1 |
| T6 | THONGAPHONE | LYPA | L007901 | 1 |
| T7 | GUMNUT CUBBY W CLADDING | LYPA | L025912 | 1 |
| T8 | ELEVATED BALANCE LOG 2m | PLAYCO | A-NAT-2019 | 4 |
| T9 | BALANCE LOG 2m | PLAYCO | A-NAT-2020 | 1 |
| T10 | CREO SHAPE - BLUE TONGUE LIZARD | SURFACE DESIGNS | NOP10797 | 1 |
| T11 | LOG STEPPERS - 200mm HIGH | PLAYCO | A-NAT-2217 | 20 |
| T11 | LOG STEPPERS - 400mm HIGH | PLAYCO | A-NAT-2258 | 15 |
| T12 | MOUND SCALING ROPE PULL 1.7m long (PowderCoat-Doeskin) | ADVENTURE+ | S0305U | 1 |
| T13 | ROCKHOLDS (blue,green,yellow) | MODUPLAY | ACCX 0006 | 38 |



SET OUT OF PLAYGROUND EQUIPMENT

SET OUT OF THE PLAYGROUND EQUIPMENT SHALL BE CARRIED IN ACCORDANCE WITH THE DRAWINGS AND THE PLAYGROUND MANUFACTURER'S REQUIREMENTS AND BE APPROVED BY THE PROJECT MANAGER/CLIENT PRIOR TO INSTALLATION.

PLAYGROUND EQUIPMENT MARKING NOTES

ENSURE THE MANUFACTURER OF THE PLAYGROUND EQUIPMENT PROVIDES CERTIFICATES OF COMPLIANCE AND A MARKING PLATE WHICH IS PERMANENTLY FIXED TO EACH MODULE OR SEPARATE PIECE OF PLAYGROUND EQUIPMENT IN ACCORDANCE WITH AS 4685. THE FOLLOWING INFORMATION SHALL BE INCLUDED ON THE PLATE:

- NAME AND ADDRESS OF MANUFACTURER OR AUTHORISED REPRESENTATIVE,
- EQUIPMENT REFERENCE AND YEAR OF MANUFACTURER.

PLAYGROUND EQUIPMENT & SURFACING

ALL PLAYGROUND ELEMENTS & SURFACING SHALL BE COMPLAINT WITH, AND INSTALLED IN ACCORDANCE WITH AS4685 AND AS4422. COUNCIL'S SUPPLIERS ARE: TUFF GROUP - [HTTPS://WWW.TUFF-GROUP.COM.AU/](https://www.tuff-group.com.au/) RUBBER TOUGH - [HTTPS://RUBBERTOUGH.COM.AU/](https://rubbertough.com.au/)

RUBBER PLAYGROUND SURFACING COLOUR SCHEDULE

| COLOUR | COLOUR BREAKDOWN | COLOUR PREVIEW |
|-----------|------------------------------------------------------------------------------------------|----------------|
| CREAM | BEIGE ~75% ~6 PTS PALE GREY ~ 13% ~ 1 PT CREAM ~ 13% ~ 1 PT (OR EQUAL) | |
| MID-GREEN | STANDARD GREEN ~91% ~10 PTS LIGHT GREY ~ 9% ~ 1 PT (OR EQUAL) | |
| DK-GREEN | STANDARD GREEN ~14% ~1 PT DK GREEN ~ 71% ~ 5 PTS LIGHT GREY ~ 9% ~ 1 PT (OR EQUAL) | |

RUBBER WEAR LAYER SHALL CONSIST OF AUSTRALIAN MADE EPDM. CERTIFICATE OF AUTHENTICITY REQUIRED.

REFER CIVIL DWGS FOR ALL DRAINAGE AND SERVICING

GROUND PLANE NOTES

- ENSURE ALL SURFACES ARE FLUSH WHERE RELEVANT.
- ALL PAVING SHALL HAVE A SLIP RESISTANCE OF P4 AS PER AS4586.

LEGEND

EXISTING

- TREES to be protected and retained
- TREE PROTECTION ZONE (TPZ) Refer Tree Protection Notes on Cover Page

PROPOSED

- TREES Refer plant schedule
- SHRUBS Refer plant schedule
- MULCHED GARDEN BEDS Refer Details and Specification
- MULCH ONLY - NO EXCAVATION UNLESS Refer Details and Specification
- ORGANIC PLAYGROUND SOFTFALL Refer Details and Specification
- RUBBER PLAYGROUND SURFACING Refer Details and Specification
- PLAYGROUND EQUIPMENT with free space/fall zone areas. Refer Manufacturer's installation requirements for dimensions
- PLAYGROUND EQUIPMENT Refer Toddlers Playground Equipment Schedule
- FURNITURE Refer Furniture Schedule
- INDICATIVE CONTOURS & VALUES ON PLAYGROUND MOUND
- FENCE Refer Details and Specification
- ROOT BARRIER (900mm deep) Refer Specification
- CONCRETE PAVING Refer Civil Drawings
- FEATURE CONCRETE PAVING Refer Civil Drawings
- CONCRETE WALLS - INSITU 450mmH Refer Civil Drawings
- MUDSTONE EDGING Refer Civil Drawings

C:\Users\Fiona\Bibli\Info.com.au\Yonder - Documents\2023\23050 Wodonga Creek Activation\CAD\L-23050_PLAYGROUND.Mxd 2023/11/29 AM

| Revision | Revision Date | Revision Description | Issued By |
|----------|---------------|-------------------------------------------|-----------|
| A | 25/11/2025 | PRELIMINARY DRAFT TENDER ISSUE FOR REVIEW | TMW |
| B | 01/05/2026 | ISSUE FOR TENDER | TMW |
| C | 18/05/2026 | REISSUE FOR TENDER | FIS |

yonder.

PO Box 1198 Albury NSW 2640
M 0423 811308
E fiona@yonderstudio.com.au
www.yonderstudio.com.au
ABN 68 437 343 209

Client: WOODWARD LAND AND CIVIL

Project: WODONGA CREEK ACTIVATION PROJECT
LANDSCAPE WORKS

Sheet Title: **DETAIL PLAN - TODDLERS' PLAYGROUND**

Drawing No: **L-23050-302** **C**

Designed By: FS/TW
Drawn By: TMW
Reviewed By: FS

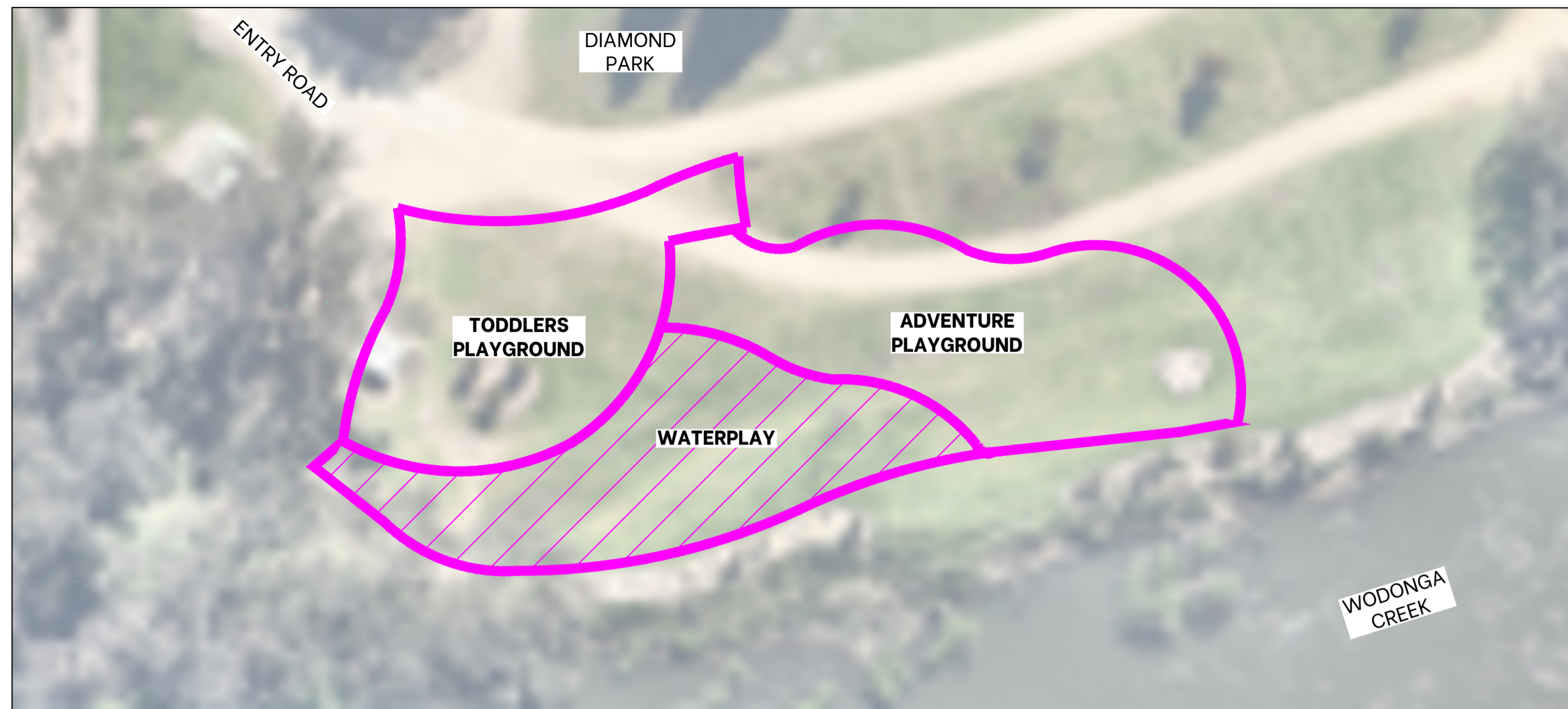
Scale: 1:100 @ A1



© 2022 Copyright. Copyright of designs is retained by Yonder Landscape Architecture. Written approval is required for reproduction.

2 TODDLERS' PLAYGROUND

LANDSCAPE PLAN 1:100 @ A1



FURNITURE SCHEDULE

| # | EQUIPMENT TYPE | SUGGESTED SUPPLIER | MODEL / CODE | FINISH | DIMENSIONS | QTY |
|-----|-----------------------------------------------------|--------------------|-------------------------------------|-------------------------------------------------------------------------------------|-------------------------------|-----|
| F1 | PICNIC TABLE SETTING WITH WHEELCHAIR ACCESS ONE END | GX OUTDOORS | MODA TABLE SETTING | FRAME: PC COLOUR Mamba BATTENS: White Ash Silver | TABLE 3.0mL, WITH BENCH 2.8mL | 1 |
| F3 | SEAT WITH BACK-REST AND ARM-REST | GX OUTDOORS | MODA PARK SEAT | FRAME: PC COLOUR Mamba BATTENS: White Ash Silver | 2m LONG | 2 |
| F5 | SUN-LOUNGER | GX OUTDOORS | MODA LOUNGE | FRAME: PC COLOUR Mamba BATTENS: White Ash Silver | | 3 |
| F6 | ROUND TABLE | GX OUTDOORS | RT-SM-DEL-002 | PC COLOUR Mamba | 800mm DIA | 1 |
| F7 | SINGLE STOOL | GX OUTDOORS | RS-SM-DEL-001 | PC COLOUR 1xMamba, 2xSerpentine, 1xMistletoe | 380mm DIA | 4 |
| F9 | BIN ENCLOSURE | GX OUTDOORS | INTEGRA EX BIN ENCLOSURE | HOOD + LID FINISH: PC COLOUR Mamba BODY FINISH: PC COLOUR Sable Silver | DOUBLE | 1 |
| F10 | BIKE RACK | GX OUTDOORS | MODA BIKE RACK | FRAME: PC COLOUR Sable Silver INFILL PANEL: Mamba | | 3 |
| F11 | DRINKING FOUNTAIN | GX OUTDOORS | AKUNA DRINKING FOUNTAIN | BODY+BASE PLATE+ARM: PC COLOUR Sable Silver FRONT+REAR FASCIA: Mamba | INCLUDES WATER FILL FACILITY | 1 |
| S2 | SHELTER | GX OUTDOORS | PANDANUS | FRAME: PC COLOUR Sable Silver ROOF: PC COLOUR 2xMamba, 2xSerpentine, 2xMistletoe | SHORT ARM | 8 |
| S3 | SHELTER | GX OUTDOORS | REDGUM with guttering + solar light | FRAME: PC COLOUR Sable Silver FRONTSLATS PC COLOUR Serpentine | 4.0m | 1 |

1 KEY PLAN

1:2000 @ A1

WATER PLAY SCHEDULE

SUGGESTED SUPPLIER: URBANIA (RICHTER SPIELGERATE)

| # | EQUIPMENT TYPE | MODEL / CODE | QTY |
|-----------------------|----------------------------------------|--------------|-----|
| PUMPS | | | |
| W1 | CRANK HANDLE PUMP | 5.17638 | 1 |
| W2 | LEVER PUMP | 5.28000 | 1 |
| W3 | MUSHROOM SPRING | 5.18000 | 1 |
| W4 | PLAYGROUND PUMP | 5.17500 | 1 |
| W5 | SEE-SAW PUMP | 5.18600 | 1 |
| GATES | | | |
| W6 | WATER FLAP | 5.20905 | 1 |
| W7 | SICKLE GATE | 5.28032 | 2 |
| W8 | RECTANGULAR FLAP | 5.28034 | 2 |
| W9 | ROTATING GATE | 5.28035 | 1 |
| OTHER | | | |
| W10 | BALL VALVE | 5.20950 | 3 |
| ACCESS FOR ALL | | | |
| W11 | WATER FLOODER W LOCKING ELEMENT | 5.13004 | 2 |
| WHEELS | | | |
| W12 | SMALL BUCKET WHEEL | 5.15910 | 2 |
| SPRAYS | | | |
| W13 | SPRAY HEAD | 5.18815 | 1 |
| | Install in 500mm high mudstone boulder | | |

SUGGESTED SUPPLIER: SURFACE DESIGNS

| | | | |
|-----|-----------------------|----------|---|
| W14 | CREO SHAPE - PLATYPUS | NOP10797 | 1 |
|-----|-----------------------|----------|---|

SUGGESTED SUPPLIER: LYPA

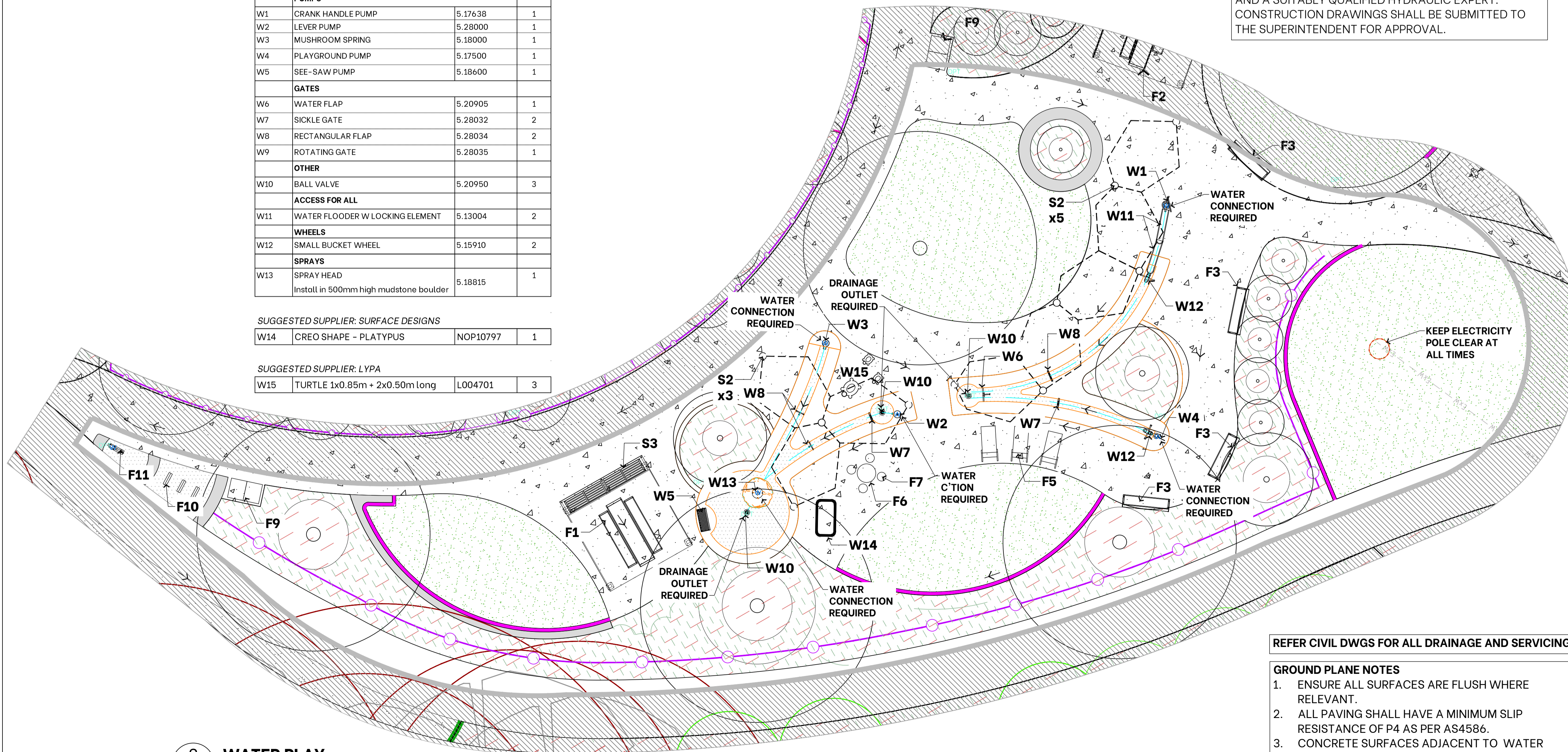
| | | | |
|-----|-------------------------------|---------|---|
| W15 | TURTLE 1x0.85m + 2x0.50m long | L004701 | 3 |
|-----|-------------------------------|---------|---|

WATER SOURCE

WATER PLAY IS A SINGLE USE POTABLE WATER SYSTEM CONNECTED TO MAINS.

WATERPLAY DESIGN & CONSTRUCT

THE DETAIL DESIGN FOR THE WATERPLAY COMPONENTS AND RILL MUST BE CARRIED OUT BY THE CONTRACTOR AND A SUITABLY QUALIFIED HYDRAULIC EXPERT. CONSTRUCTION DRAWINGS SHALL BE SUBMITTED TO THE SUPERINTENDENT FOR APPROVAL.

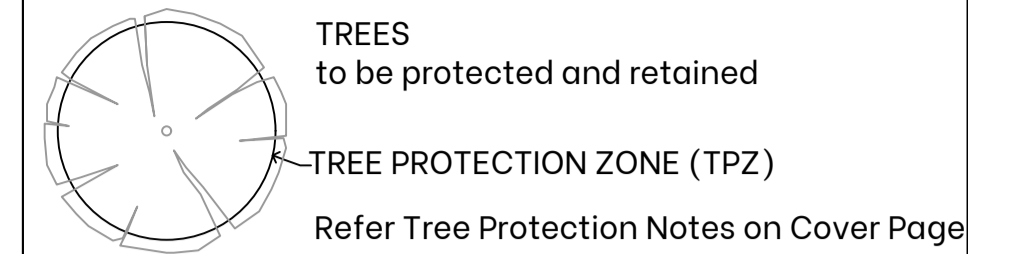


REFER CIVIL DWGS FOR ALL DRAINAGE AND SERVICING

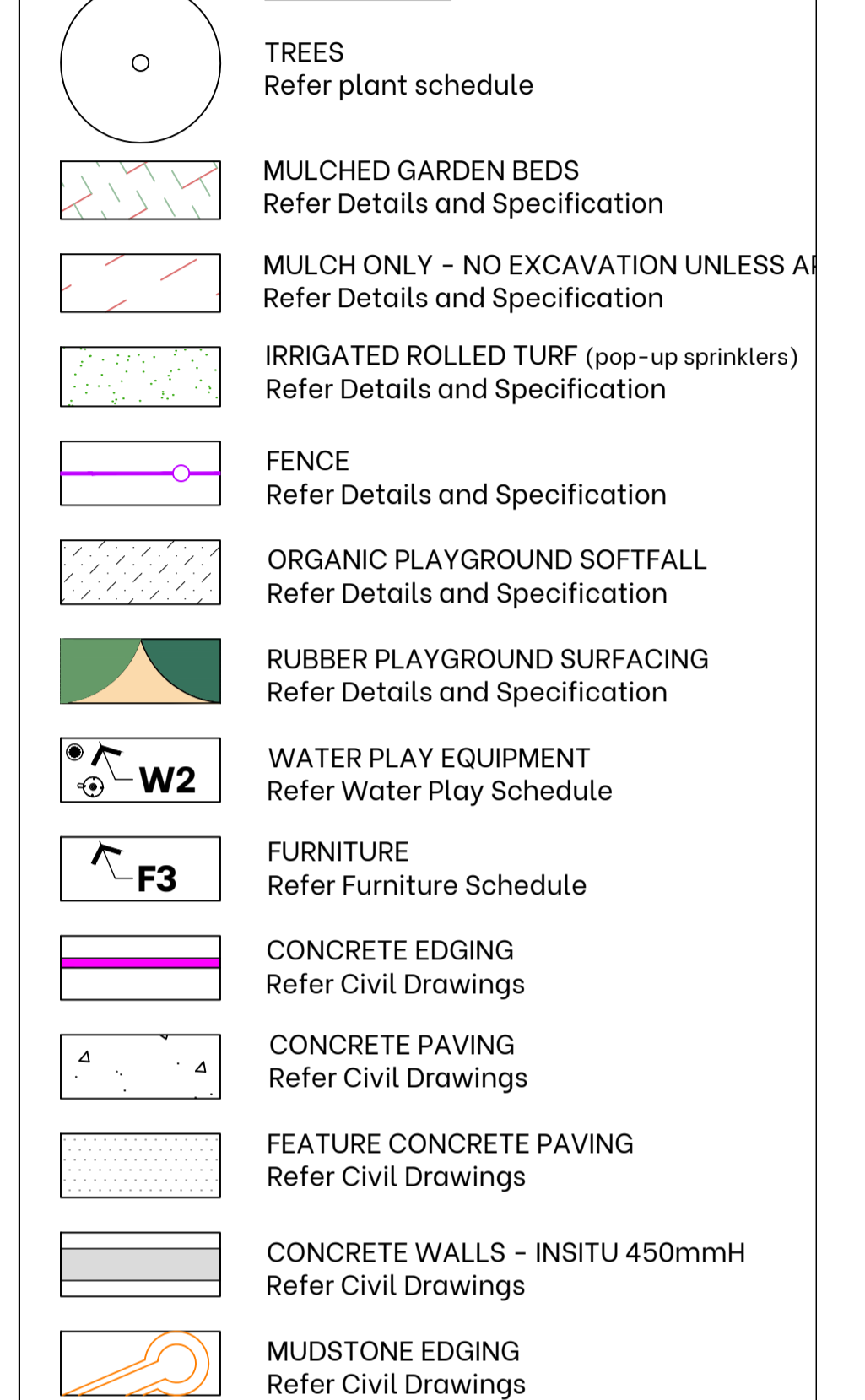
GROUND PLANE NOTES

- ENSURE ALL SURFACES ARE FLUSH WHERE RELEVANT.
- ALL PAVING SHALL HAVE A MINIMUM SLIP RESISTANCE OF P4 AS PER AS4586.
- CONCRETE SURFACES ADJACENT TO WATER PLAY AREAS REQUIRE A TEXTURED NON-SLIP FINISH ACHIEVING A MINIMUM AS4586 CLASS C (WET-BAREFOOT) SLIP-RESISTANCE RATING.

EXISTING



PROPOSED



| Revision | Revision Date | Revision Description | Issued By |
|----------|---------------|-------------------------------------------|-----------|
| A | 25/11/2025 | PRELIMINARY DRAFT TENDER ISSUE FOR REVIEW | TMW |
| B | 01/05/2026 | ISSUE FOR TENDER | TMW |
| C | 18/05/2026 | REISSUE FOR TENDER | FIS |

yonder.

PO Box 1198 Albury NSW 2640
M 0423 811308
E fiona@yonderstudio.com.au
www.yonderstudio.com.au
ABN 68 437 343 209

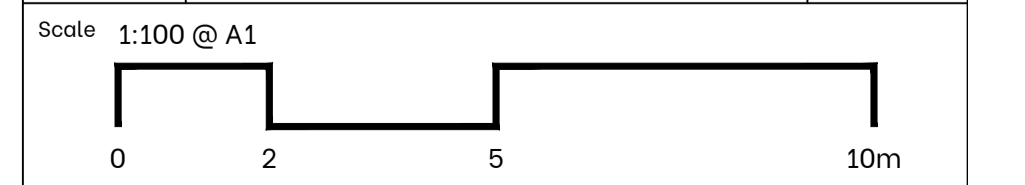
Client: **WOODWARD LAND AND CIVIL**

Project: **WODONGA CREEK ACTIVATION PROJECT LANDSCAPE WORKS**

Sheet Title: **DETAILED LAYOUT PLAN - WATER PLAY**

Drawing No: **L-23050-303 C**

Designed By: FS/TW
Drawn By: TMW
Reviewed By: FS



2 WATER PLAY LANDSCAPE PLAN

1:100 @ A1