

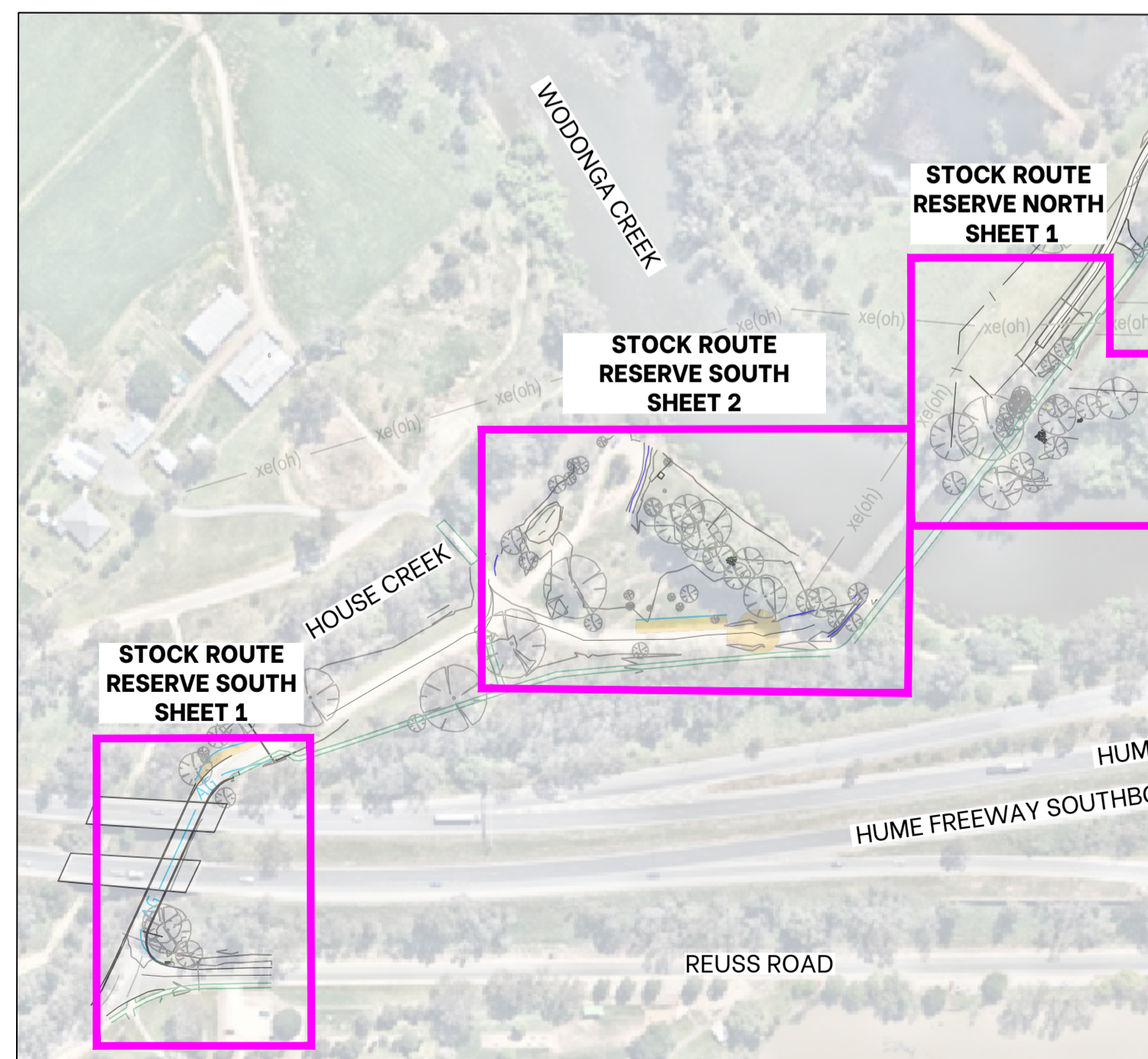
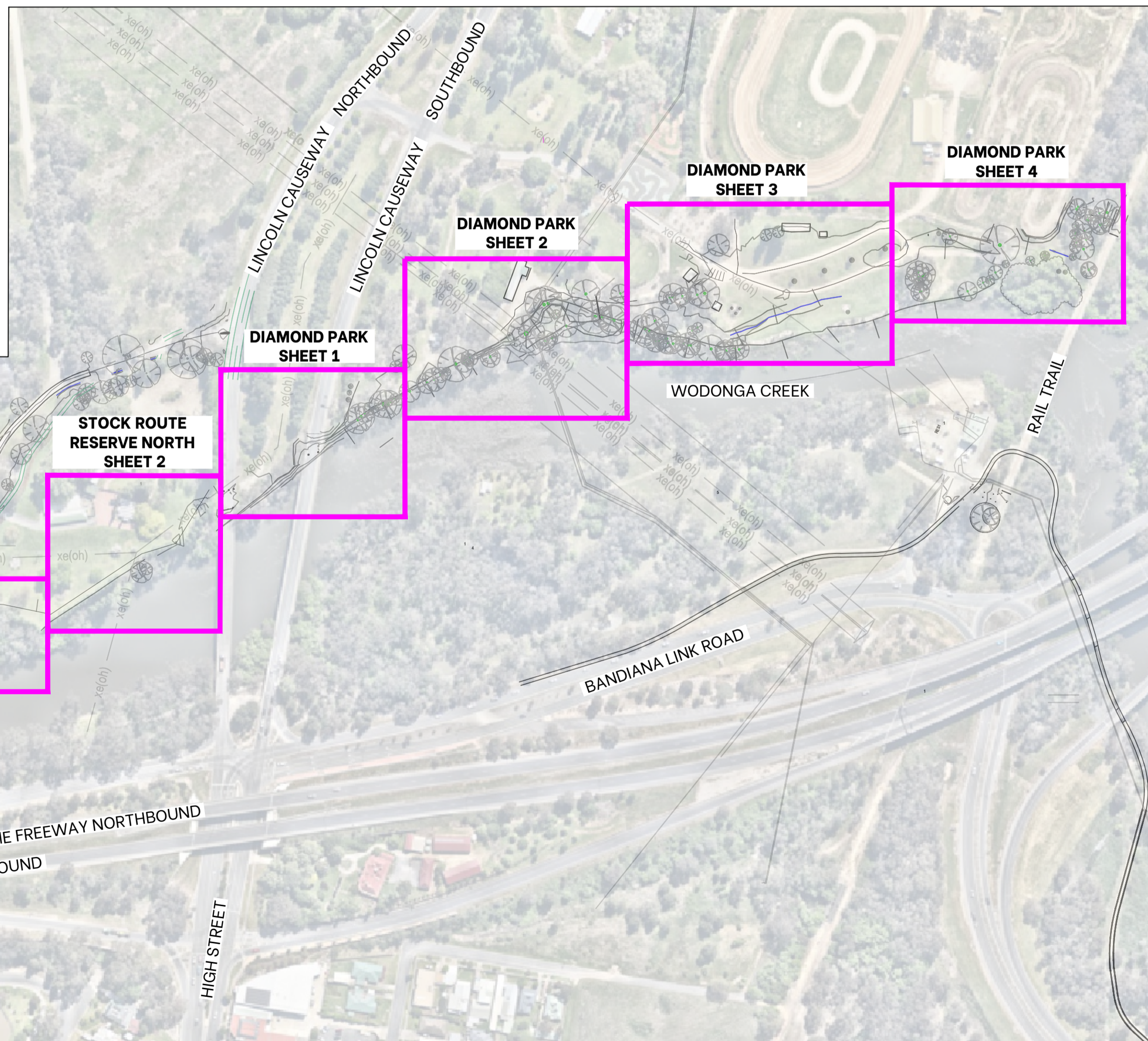
WODONGA CREEK ACTIVATION PROJECT

CITY OF WODONGA

LANDSCAPE WORKS

DRAWING SCHEDULE

DRAWING No.	DRAWING TITLE	SCALE
WODONGA CREEK WORKS		
L-23050-101	LANDSCAPE PLAN - STOCK ROUTE RESERVE SOUTH 1	1:250
L-23050-102	LANDSCAPE PLAN - STOCK ROUTE RESERVE SOUTH 2	1:250
L-23050-103	LANDSCAPE PLAN - STOCK ROUTE RESERVE NORTH 1	1:250
L-23050-104	LANDSCAPE PLAN - STOCK ROUTE RESERVE NORTH 2	1:250
L-23050-105	LANDSCAPE PLAN - DIAMOND PARK SHT 1	1:250
L-23050-106	LANDSCAPE PLAN - DIAMOND PARK SHT 2	1:250
L-23050-107	LANDSCAPE PLAN - DIAMOND PARK SHT3	1:250
L-23050-108	LANDSCAPE PLAN - DIAMOND PARK SHT 4	1:250
PLAYGROUND WORKS		
L-23050-201	DRAINAGE & GRADING PLAN - PLAYGROUND	1:200
L-23050-202	SURFACES AND FINISHES PLAN - PLAYGROUND	1:200
L-23050-203	PLANTING PLAN - PLAYGROUND	1:200
L-23050-301	DETAIL PLAN - ADVENTURE PLAY	1:100
L-23050-302	DETAIL PLAN - TODDLERS PLAY	1:100
L-23050-303	DETAIL PLAN - WATER PLAY	1:100
DETAILS		
L-23050-LD01	LANDSCAPE DETAILS	AS SHOWN
L-23050-LD02	PLAYGROUND MOUND DETAILS	AS SHOWN
L-23050-LD03	SOFT LANDSCAPE DETAILS	AS SHOWN



1 LAYOUT PLAN
1:2500 @ A1

SERVICES NOTE:

The location of underground services shown on this drawing are approximate only - actual site conditions may vary. No guarantee can be given that all existing services are shown on this plan.

The exact positions of the services must be established by the tenderer/contractor on site prior to any works commencing.

DIAL BEFORE YOU DIG

DIAL 1100 BEFORE YOU DIG

PRIOR to undertaking any works on site, the Contractor MUST lodge an enquiry with the 'DIAL BEFORE YOU DIG' service (and any individual service asset owners not members of the 'DIAL BEFORE YOU DIG' service). This action is required to obtain a complete record search of the services in the works area, to obtain approval from authorities and asset owners for excavation in such areas and to obtain any further requirements regarding work practices, etc.

GENERAL NOTE

ALL DIMENSIONS AND EXISTING CONDITIONS SHALL BE CHECKED AND VERIFIED BY THE CONTRACTOR BEFORE PROCEEDING WITH THE WORK.

TREE PROTECTION NOTES

COMPLY WITH THE CURRENT EDITION OF RELEVANT STANDARDS, INCLUDING (BUT NOT LIMITED TO):

- AS 4970 Protection of Trees on Development Sites
- AS 4373 Pruning of Amenity Trees

PROTECTION OF TREES

ALL TREES SHALL BE PRESERVED UNLESS THEY'RE DESIGNATED FOR REMOVAL ON THE CIVIL DRAWINGS. CARE SHALL BE TAKEN TO PROTECT TREES FROM DAMAGE. PROTECT TREES MARKED FOR RETENTION BY MEANS OF A TEMPORARY FENCE LOCATED NO CLOSER TO THE TREE THAN THE EDGE OF THE CANOPY UNLESS OTHERWISE SPECIFIED.

PERSONS, VEHICLES, OR MACHINERY SHALL NOT ENTER THE TREE PROTECTION ZONE WITHOUT THE PERMISSION OF THE SUPERINTENDENT. IF TEMPORARY ACCESS IS REQUIRED WITHIN THE TPZ, BOARDS OR LIKE PROTECTION SHALL BE PLACED OVER THE GROUND, TO MINIMISE COMPACTION OF THE SOIL BY VEHICLES, HEAVY EQUIPMENT, AND PEDESTRIANS.

KEEP AREA WITHIN THE TPZ FREE OF ALL EQUIPMENT, BUILDING MATERIALS AND DEBRIS. DO NOT LEAN MATERIALS, EQUIPMENT, OR DEBRIS AGAINST TRUNKS. STORAGE OF MATERIALS, CHEMICALS, FILL, EQUIPMENT, OR TEMPORARY BUILDING SHALL NOT TAKE PLACE OVER THE ROOT ZONE OF ANY TREE. NOTHING SHALL BE ATTACHED TO TREES INCLUDING TEMPORARY SERVICES WIRES, NAILS, SCREWS, OR ANY OTHER FIXING DEVICE.

IF A TPZ IS TO BE IMPACTED BY CONSTRUCTION WORKS, A 'LEVEL 5' ARBORIST MUST BE CONSULTED. THE CONTRACTOR SHALL PROVIDE A SCOPE OF WORKS TO BE CARRIED OUT WITHIN THE TPZ TO THE 'LEVEL 5' ARBORIST

We acknowledge and respect Traditional Owners as the traditional custodians of our shared lands, waters and seas. We recognise their unique ability to care for Country and their deep spiritual connection with Country. We honour Elders past, present and emerging, whose knowledge and wisdom will ensure the continuation of culture, and the values which uphold them.

Revision	Revision Date	Revision Description	Issued By
A	25/11/2025	PRELIMINARY DRAFT ISSUE FOR REVIEW - WIP	TMW
B	01/05/2026	ISSUE FOR TENDER	TMW
C	18/05/2026	RE-ISSUE FOR TENDER	FIS

yonder.

PO Box 1198 Albury NSW 2640
M 0423 811308
E fiona@yonderstudio.com.au
www.yonderstudio.com.au
ABN 68 437 343 209

Client **WOODWARD LAND AND CIVIL**

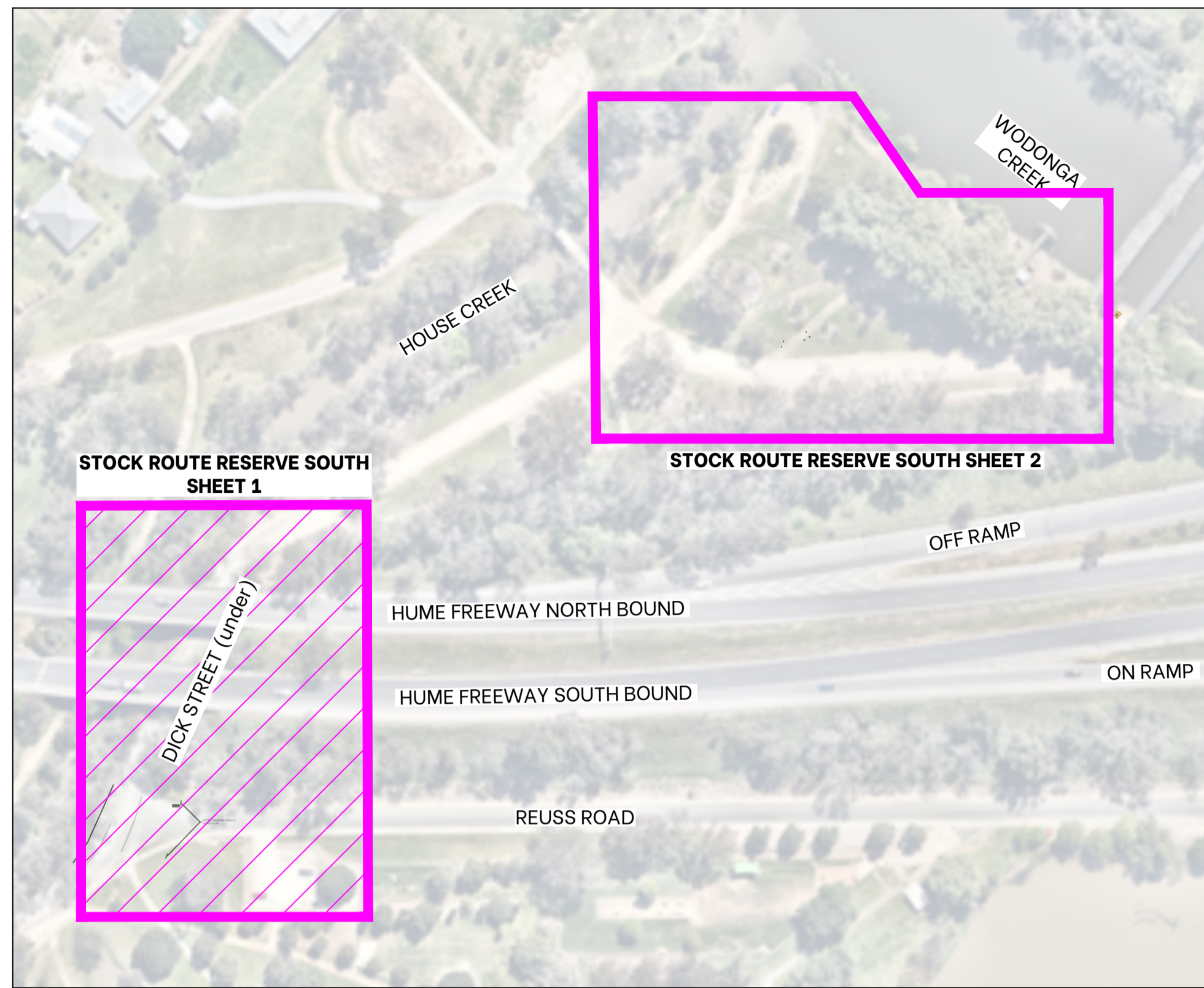
Project **WODONGA CREEK ACTIVATION PROJECT
LANDSCAPE WORKS**

Sheet Title **COVER PAGE**

Drawing No **L-23050 COVER C**

Designed By FS/TW
Drawn By TMW
Reviewed By FS

Scale 1:2,500 @ A1



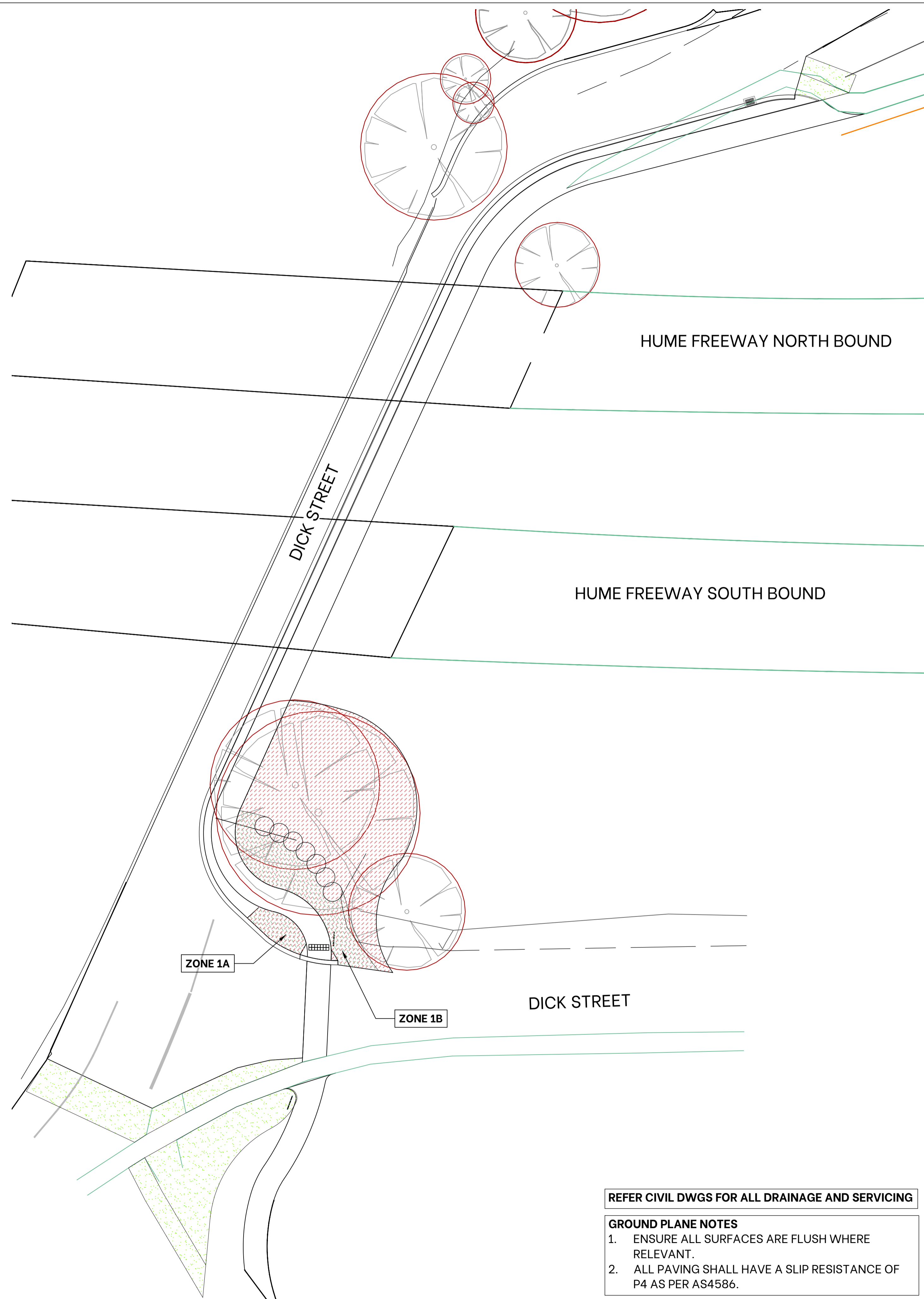
1 STOCK ROUTE RESERVE SOUTH - KEY PLAN
1:1,500 @ A1

PLANT SCHEDULE

Code	Botanical Name	Common Name	Mature Size (H x W)	Min. Supply Size	Density	QTY	
						ZONE 1A	ZONE 1B
						Area (m2)	
						15	63
SHRUBS							
○	<i>Callistemon sieberi</i> 'Sugar Candy'	Sugar Candy Bottlebush	3x2m	150mmpot	As shown	0	7
GROUNDCOVERS AND GRASSY PLANTS							
						(plants/m2)	
■	<i>Carex appressa</i>	Sedge	1x1m	tubestock	2	0	0
■	<i>Dianella revoluta</i>	Blueberry Lily	1x1m	tubestock	2	0	0
■	<i>Hardenbergia violacea</i>	Purple Coral Pea	3x2m	tubestock	1	0	0
■	<i>Lomandra filiformis</i>	Wattle Mat-Rush	0.3-0.6x0.3m	tubestock	3	23	95
■	<i>Poa labillardierei</i>	Common Tussock Grass	1.2x0.5m	tubestock	3	23	95

PLANTING NOTES

1. THE LANDSCAPE CONTRACTOR SHALL CROSS CHECK ALL PLANT QUANTITIES ON THE PLANT SCHEDULE TO THE LANDSCAPE PLAN PRIOR TO ORDERING OF PLANTS.
2. ALL TREES, SHRUBS AND GROUNDCOVERS SHALL BE PLANTED WITH WATER RETENTION CRYSTALS TO REDUCE THE REQUIREMENT OF ONGOING WATERING. ADD WATER CRYSTALS TO EACH PLANTING HOLE IN ACCORDANCE WITH THE MANUFACTURERS SPECIFICATION.
3. ALL TREES, SHRUBS AND GROUNDCOVERS SHALL ALSO BE PLANTED WITH SLOW RELEASE FERTILISER. ENSURE THAT THE FERTILISER FOR NATIVE PLANTS ARE LOW PHOSPHOROUS AND IS FORMULATED SPECIFICALLY FOR NATIVE PLANTS.



2 STOCK ROUTE RESERVE SOUTH - SHEET 1
LANDSCAPE PLAN 1:250 @ A1

REFER CIVIL DWGS FOR ALL DRAINAGE AND SERVICING

- GROUND PLANE NOTES**
1. ENSURE ALL SURFACES ARE FLUSH WHERE RELEVANT.
 2. ALL PAVING SHALL HAVE A SLIP RESISTANCE OF P4 AS PER AS4586.

LEGEND

EXISTING

- TREES to be protected and retained
- TREE PROTECTION ZONE (TPZ) Refer Tree Protection Notes on Cover Page
- MULCHED GARDEN BEDS. Retain and protect
- EXISTING PICNIC SETTINGS on concrete slabs. Retain and protect.

PROPOSED

- Ai** TREES Refer plant schedule
- SHRUBS
- MULCHED GARDEN BEDS WITH SPADE EDGING
- MULCH ONLY - NO EXCAVATION UNLESS APPROVED Refer Details and Specification
- COMPACTED GRANITE GRAVEL WITH STEEL EDGING
- FURNITURE ON CONCRETE SLABS Refer Details and Specification
- GRASSING (SEEDING) Refer Details and Specification
- BANK REHABILITATION WORKS Refer Details and Specification
- ZONE 4** PLANT TAG. Refer Plant Schedule
- F4** FURNITURE. Refer Furniture Schedule
- SHARED PATH 2.5m WIDE Refer Civil Dwgs
- FENCE. Refer Civil Dwgs.
- BOLLARDS. Refer Civil Dwgs.
- LOCKABLE GATE. Refer Civil Dwgs.

Revision	Revision Date	Revision Description	Issued By
A	25/11/2025	PRELIMINARY DRAFT ISSUE FOR REVIEW - WIP	TMW
B	01/05/2026	ISSUE FOR TENDER	TMW
C	18/05/2026	RE-ISSUE FOR TENDER	FIS

yonder.

PO Box 1198 Albury NSW 2640
M 0423 811306
E fiona@yonderstudio.com.au
www.yonderstudio.com.au
ABN 68 437 343 209

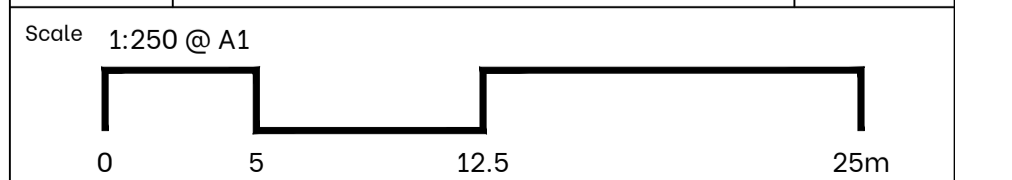
Client **WOODWARD LAND AND CIVIL**

Project **WODONGA CREEK ACTIVATION PROJECT LANDSCAPE WORKS**

Sheet Title **LANDSCAPE PLAN: STOCK ROUTE RESERVE STH - 1**

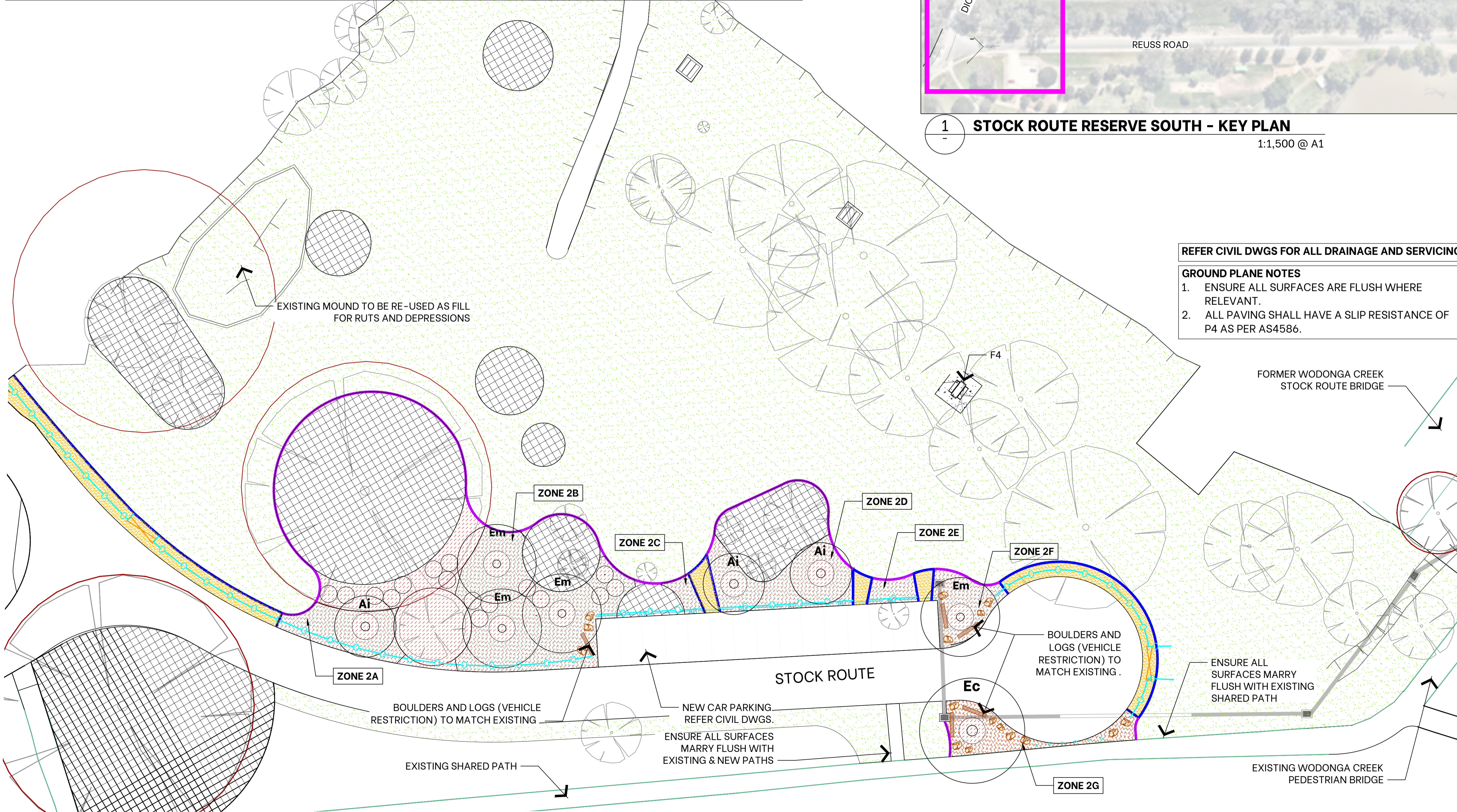
Drawing No **L-23050-101 C**

Designed By FS/TW
Drawn By TMW
Reviewed By FS



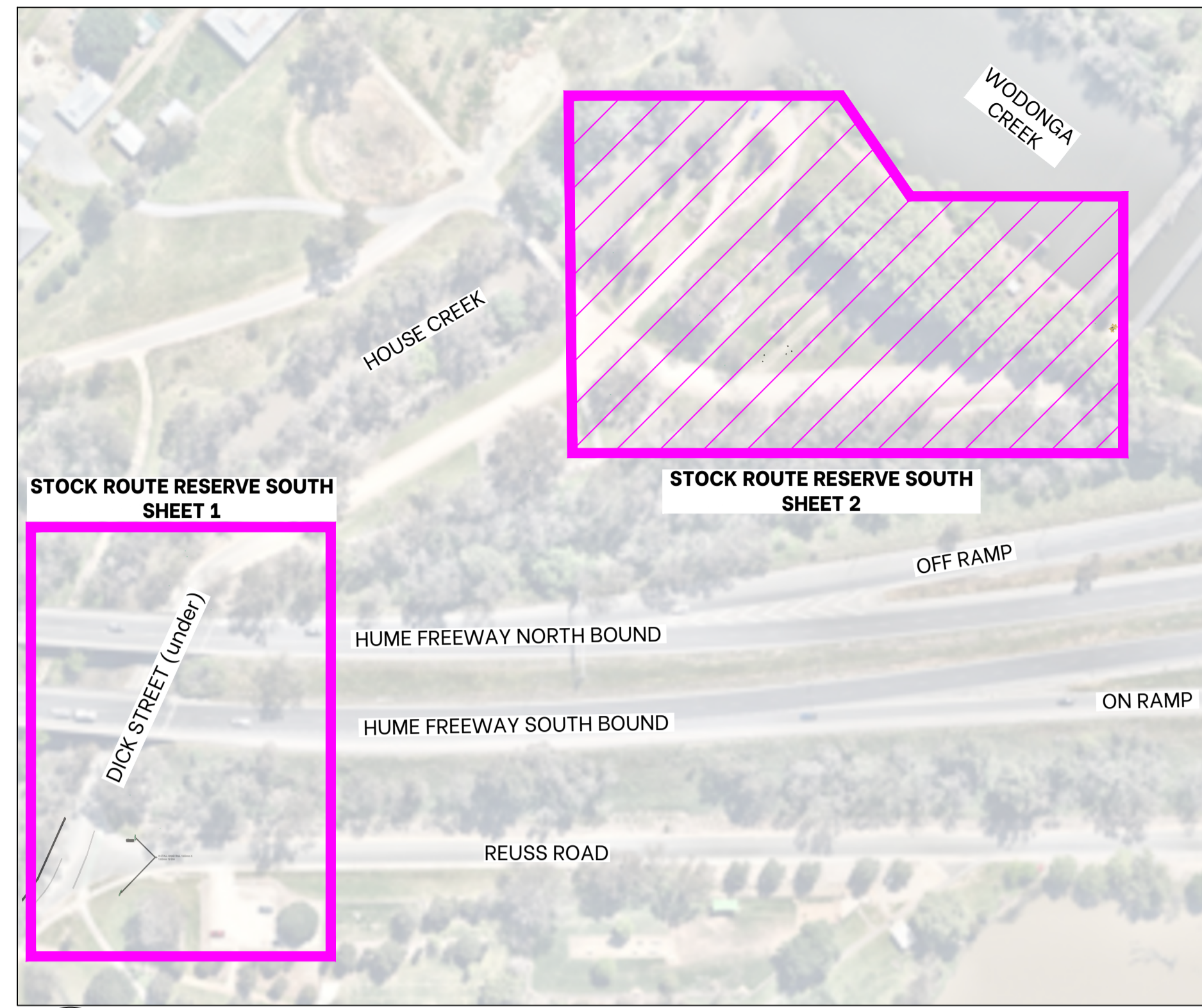
PLANT SCHEDULE

Code	Botanical Name	Common Name	Mature Size (H x W)	Min. Supply Size	Density	QTY							
TREES													
Ai	Acacia implexa	Lightwood	8x7m	27L pot, 1.5m H	As shown	3							
Ec	Eucalyptus camaldulensis	River Red Gum	30x15m	27L pot, 1.5m H	As shown	1							
Em	Eucalyptus melliodora	Yellow Box	15x9m	27L pot, 1.5m H	As shown	4							
							ZONE 2A	ZONE 2B	ZONE 2C	ZONE 2D	ZONE 2E	ZONE 2F	ZONE 2G
SHRUBS (plant in naturalistic grouping of 3 species)													
	Bursaria spinosa	Native Blackthorn	4x3m	tubestock	As shown	3	2	0	0	0	0	0	0
	Callistemon sieberi	River Bottlebrush	3-4x2-3m	tubestock	As shown	5	3	0	0	0	0	0	0
	Callistemon sieberi 'Sugar Candy'	Sugar Candy Bottlebrush	3x2m	150mmpot	As shown	0	0	0	0	0	0	0	0
	Leptospermum obovatum	River Tea-tree	2-3x2-3m	tubestock	As shown	5	3	0	0	0	0	0	0
GROUNDCOVERS AND GRASSY PLANTS													
					(plants/m2)								
	Carex appressa	Sedge	1x1m	tubestock	2	21	63	4	30	6	14	20	
	Dianella revoluta	Blueberry Lily	1x1m	tubestock	2	21	63	4	30	6	14	20	
	Hardenbergia violacea	Purple Coral Pea	3x2m	tubestock	1	16	47	3	23	5	11	15	
	Lomandra filiformis	Wattle Mat-Rush	0.3-0.6x0.3m	tubestock	3	23	71	5	34	7	16	23	
	Poa labillardierei	Common Tussock Grass	1.2x0.5m	tubestock	3	23	71	5	34	7	16	23	



FURNITURE SCHEDULE

#	EQUIPMENT TYPE	SUGGESTED SUPPLIER	MODEL / CODE	FIXING	FINISH	DIMENSIONS	QTY
F4	SHORT PICNIC TABLE SETTING WHEELCHAIR ACCESSIBLE ONE END	GX OUTDOORS	MODA TABLE SETTING	ABOVE GROUND FIXINGS ON CONCRETE PAD	FRAME: PC COLOUR Mamba BATTENS: White Ash Silver	TABLE 2.0mL, WITH BENCH 1.8mL	1



REFER CIVIL DWGS FOR ALL DRAINAGE AND SERVICING

- GROUND PLANE NOTES**
- ENSURE ALL SURFACES ARE FLUSH WHERE RELEVANT.
 - ALL PAVING SHALL HAVE A SLIP RESISTANCE OF P4 AS PER AS4586.

LEGEND

- EXISTING**
- TREES to be protected and retained
 - TREE PROTECTION ZONE (TPZ) Refer Tree Protection Notes on Cover Page
 - MULCHED GARDEN BEDS. Retain and protect
 - EXISTING PICNIC SETTINGS on concrete slabs. Retain and protect.
- PROPOSED**
- TREES Refer plant schedule
 - SHRUBS
 - MULCHED GARDEN BEDS WITH SPADE EDGING
 - MULCH ONLY - NO EXCAVATION UNLESS APPROVED Refer Details and Specification
 - COMPACTED GRANITE GRAVEL WITH STEEL EDGING
 - FURNITURE ON CONCRETE SLABS Refer Details and Specification
 - GRASSING (SEEDING) Refer Details and Specification
 - BANK REHABILITATION WORKS Refer Details and Specification
 - PLANT TAG. Refer Plant Schedule
 - FURNITURE. Refer Furniture Schedule
 - SHARED PATH 2.5m WIDE Refer Civil Dwgs
 - FENCE. Refer Civil Dwgs.
 - BOLLARDS. Refer Civil Dwgs.
 - LOCKABLE GATE. Refer Civil Dwgs.

Revision	Revision Date	Revision Description	Issued By
A	25/11/2025	PRELIMINARY DRAFT ISSUE FOR REVIEW - WIP	TMW
B	01/05/2026	ISSUE FOR TENDER	TMW
C	18/05/2026	RE-ISSUE FOR TENDER	FIS

yonder.

PO Box 1198 Albury NSW 2640
M 0423 811308
E fiona@yonderstudio.com.au
www.yonderstudio.com.au
ABN 68 437 343 209

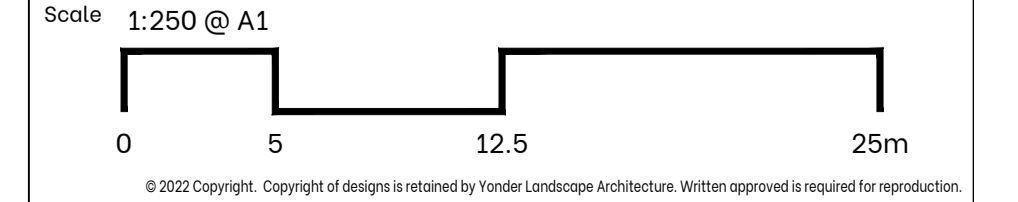
Client: **WOODWARD LAND AND CIVIL**

Project: **WODONGA CREEK ACTIVATION PROJECT LANDSCAPE WORKS**

Sheet Title: **LANDSCAPE PLAN: STOCK ROUTE RESERVE STH - 2**

Drawing No: **L-23050-102** **C**

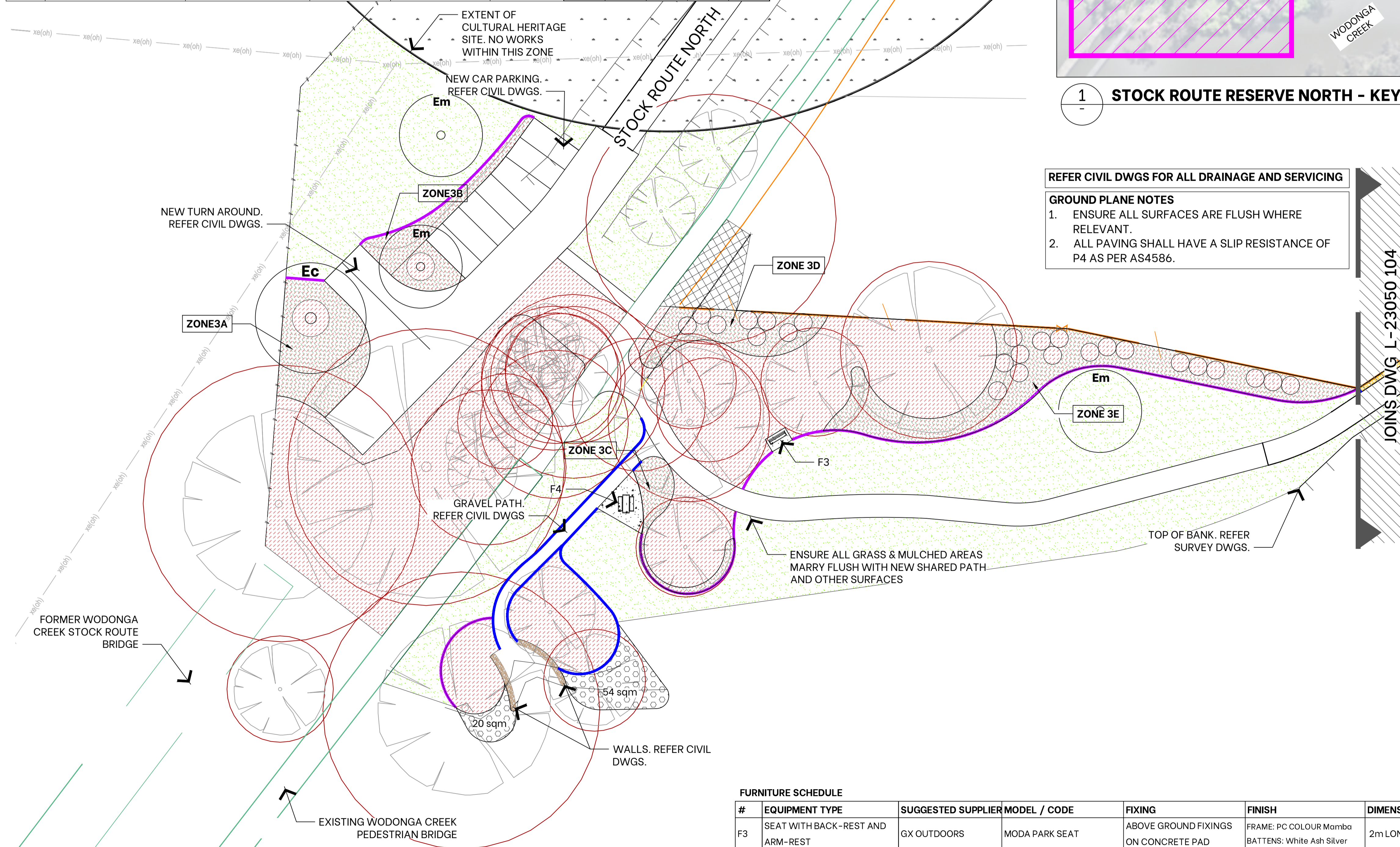
Designed By: FS/TW
Drawn By: TMW
Reviewed By: FS



© 2022 Copyright. Copyright of designs is retained by Yonder Landscape Architecture. Written approval is required for reproduction.

PLANT SCHEDULE

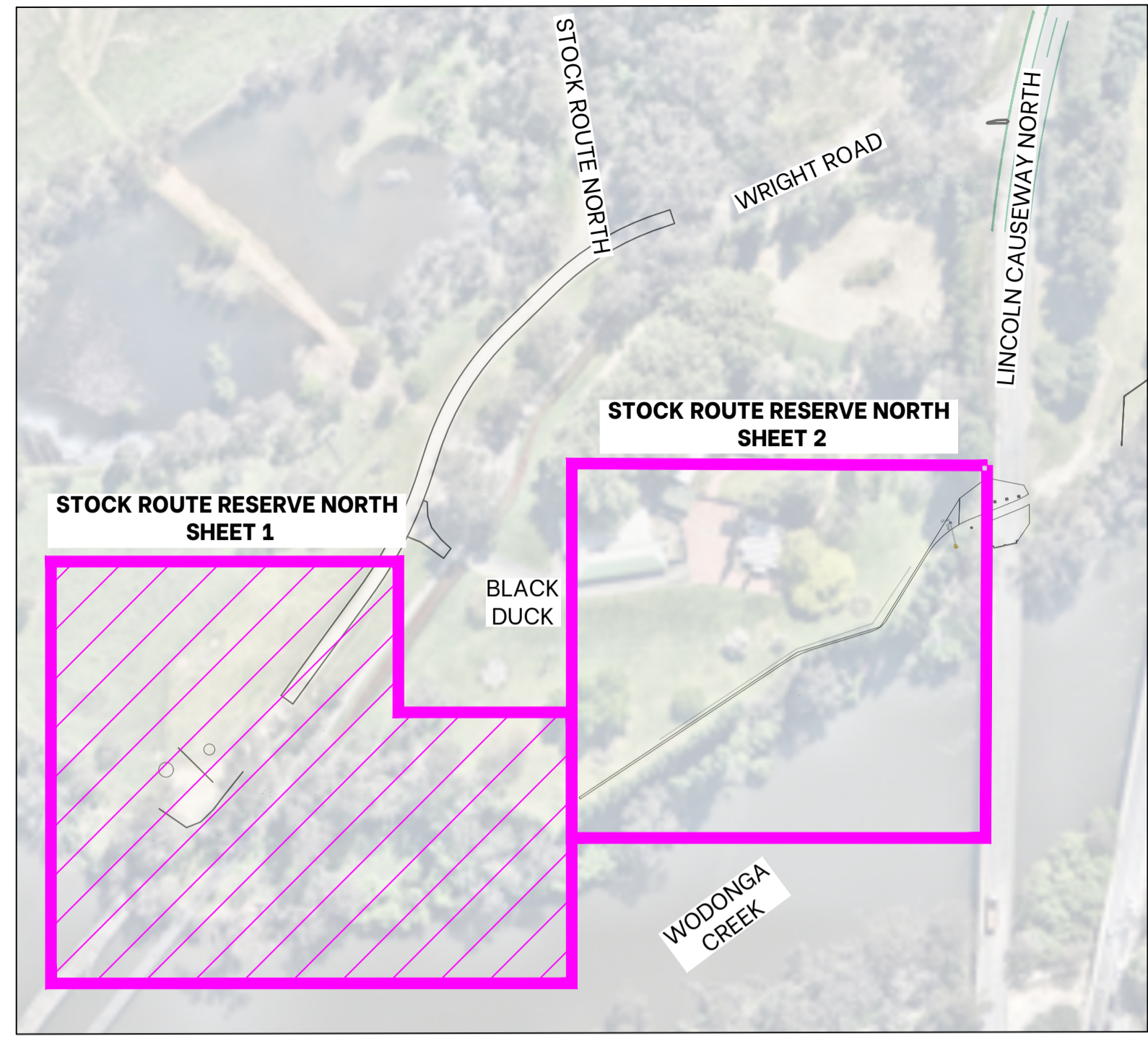
Code	Botanical Name	Common Name	Mature Size (H x W)	Min. Supply Size	Density	QTY					
TREES											
Ai	<i>Acacia implexa</i>	Lightwood	8x7m	27L pot, 1.5m H	As shown	0					
Ec	<i>Eucalyptus camaldulensis</i>	River Red Gum	30x15m	27L pot, 1.5m H	As shown	1					
Em	<i>Eucalyptus melliodora</i>	Yellow Box	15x9m	27L pot, 1.5m H	As shown	3					
						ZONE 3A	ZONE 3B	ZONE 3C	ZONE 3D	ZONE 3E	
SHRUBS (plant in naturalistic grouping of 2 or 3 species)											
Bs	<i>Bursaria spinosa</i>	Native Blackthorn	4x3m	tubestock	As shown	0	0	0	3	7	
Cs	<i>Callistemon sieberi</i>	River Bottlebrush	3-4x2-3m	tubestock	As shown	0	0	0	2	5	
CS	<i>Callistemon sieberi</i> 'Sugar Candy'	Sugar Candy Bottlebrush	3x2m	150mmpot	As shown	0	0	0	0	0	
Ls	<i>Leptospermum obovatum</i>	River Tea-tree	2-3x2-3m	tubestock	As shown	0	0	0	0	5	
GROUNDCOVERS AND GRASSY PLANTS						Area (m2)					
						(plants/m2)	98	68	34	54	164
Cs	<i>Carex appressa</i>	Sedge	1x1m	tubestock	2	39	27	14	22	66	
Ds	<i>Dianella revoluta</i>	Blueberry Lily	1x1m	tubestock	2	39	27	14	22	66	
Hs	<i>Hardenbergia violacea</i>	Purple Coral Pea	3x2m	tubestock	1	29	20	10	16	49	
Ls	<i>Lomandra filiformis</i>	Wattle Mat-Rush	0.3-0.6x0.3m	tubestock	3	44	31	15	24	74	
Po	<i>Poa labillardierei</i>	Common Tussock Grass	1.2x0.5m	tubestock	3	44	31	15	24	74	



2 STOCK ROUTE RESERVE NORTH - SHEET 1
LANDSCAPE PLAN 1:250 @ A1

FURNITURE SCHEDULE

#	EQUIPMENT TYPE	SUGGESTED SUPPLIER	MODEL / CODE	FIXING	FINISH	DIMENSIONS	QTY
F3	SEAT WITH BACK-REST AND ARM-REST	GX OUTDOORS	MODA PARK SEAT	ABOVE GROUND FIXINGS ON CONCRETE PAD	FRAME: PC COLOUR Mamba BATTENS: White Ash Silver	2m LONG	1
F4	SHORT PICNIC TABLE SETTING WHEELCHAIR ACCESSIBLE ONE END	GX OUTDOORS	MODA TABLE SETTING	ABOVE GROUND FIXINGS ON CONCRETE PAD	FRAME: PC COLOUR Mamba BATTENS: White Ash Silver	TABLE 2.0mL, WITH BENCH 1.8mL	1



1 STOCK ROUTE RESERVE NORTH - KEY PLAN
1:1,500 @ A1

REFER CIVIL DWGS FOR ALL DRAINAGE AND SERVICING

- GROUND PLANE NOTES**
- ENSURE ALL SURFACES ARE FLUSH WHERE RELEVANT.
 - ALL PAVING SHALL HAVE A SLIP RESISTANCE OF P4 AS PER AS4586.

JOINS DWG L-23050 104

LEGEND

EXISTING

- TREES to be protected and retained
- TREE PROTECTION ZONE (TPZ) Refer Tree Protection Notes on Cover Page
- MULCHED GARDEN BEDS. Retain and protect
- EXISTING PICNIC SETTINGS on concrete slabs. Retain and protect.

PROPOSED

- Ai** TREES Refer plant schedule
- SHRUBS
- MULCHED GARDEN BEDS WITH SPADE EDGING
- MULCH ONLY - NO EXCAVATION UNLESS APPROVED Refer Details and Specification
- COMPACTED GRANITE GRAVEL WITH STEEL EDGING
- FURNITURE ON CONCRETE SLABS Refer Details and Specification
- GRASSING (SEEDING) Refer Details and Specification
- BANK REHABILITATION WORKS Refer Details and Specification
- ZONE 4** PLANT TAG. Refer Plant Schedule
- F4** FURNITURE. Refer Furniture Schedule
- SHARED PATH 2.5m WIDE Refer Civil Dwgs
- FENCE. Refer Civil Dwgs.
- BOLLARDS. Refer Civil Dwgs.
- LOCKABLE GATE. Refer Civil Dwgs.

Revision	Revision Date	Revision Description	Issued By
A	25/11/2025	PRELIMINARY DRAFT ISSUE FOR REVIEW - WIP	TMW
B	01/05/2026	ISSUE FOR TENDER	TMW
C	18/05/2026	RE-ISSUE FOR TENDER	FIS

yonder.

PO Box 1198 Albury NSW 2640
M 0433 811308
E Fiona@yonderstudio.com.au
www.yonderstudio.com.au
ABN 68 437 343 209

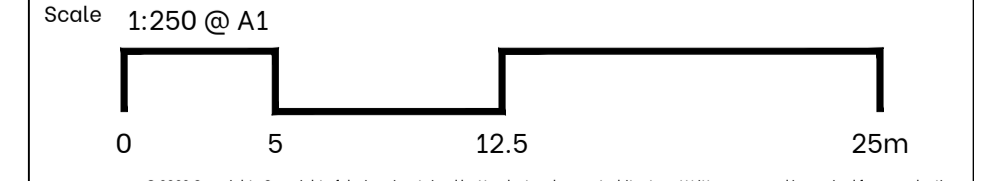
Client **WOODWARD LAND AND CIVIL**

Project **WODONGA CREEK ACTIVATION PROJECT LANDSCAPE WORKS**

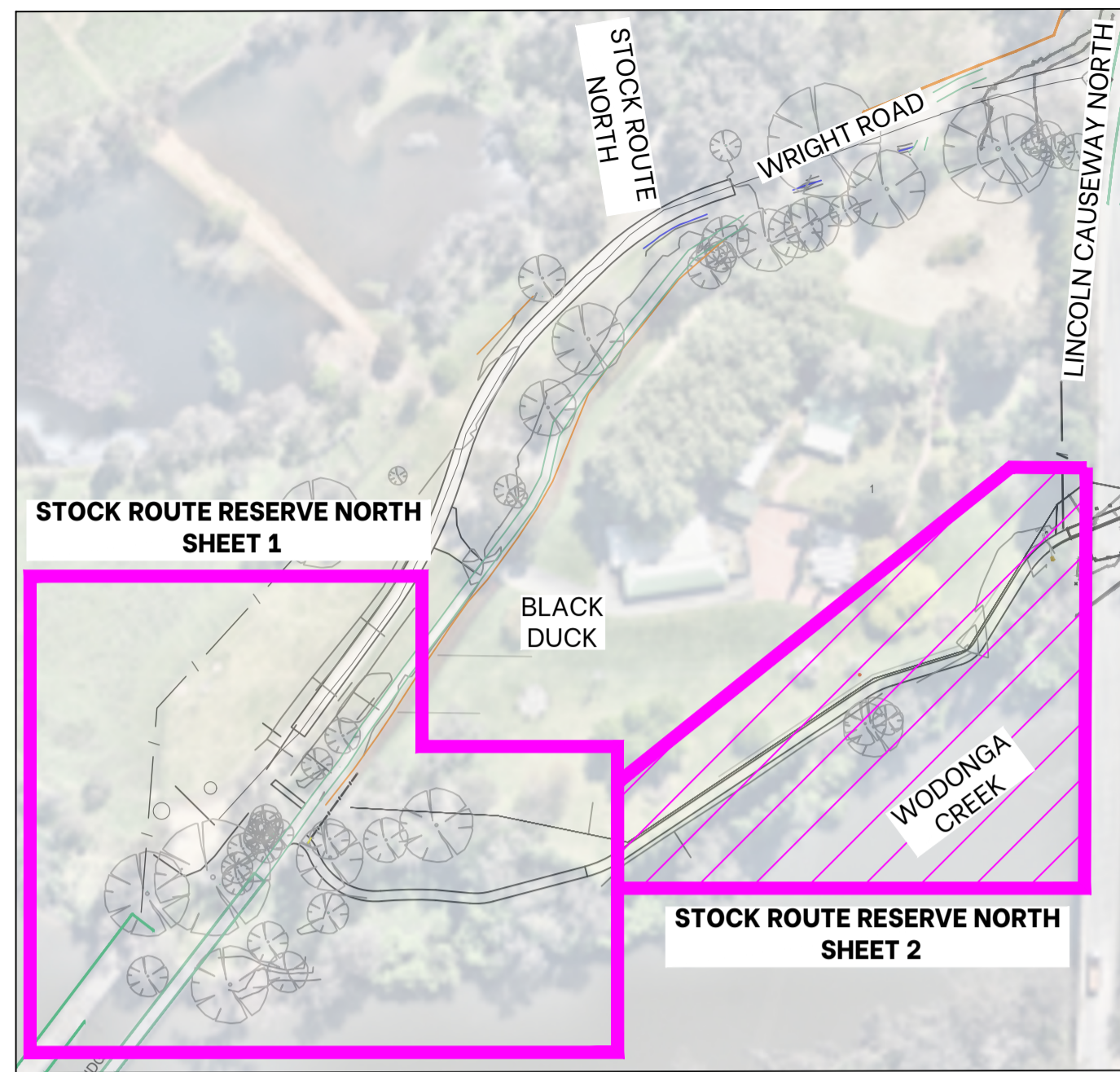
Sheet Title **LANDSCAPE PLAN: STOCK ROUTE RESERVE NTH - 1**

Drawing No **L-23050-103** **C**

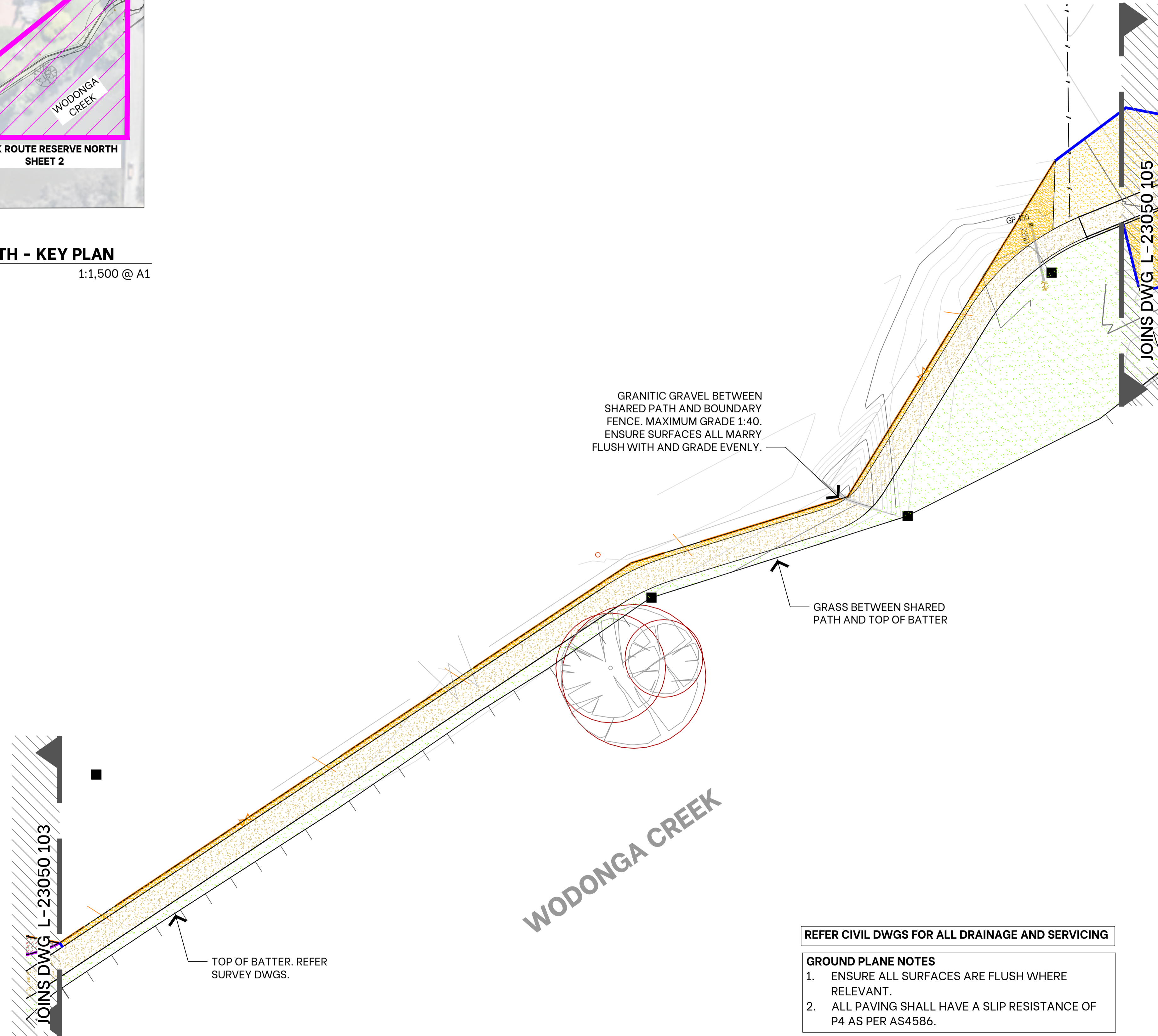
Designed By FS/TW
Drawn By TMW
Reviewed By FS



© 2022 Copyright. Copyright of designs is retained by Yonder Landscape Architecture. Written approval is required for reproduction.



1 STOCK ROUTE RESERVE NORTH - KEY PLAN
1:1,500 @ A1



REFER CIVIL DWGS FOR ALL DRAINAGE AND SERVICING

- GROUND PLANE NOTES**
- ENSURE ALL SURFACES ARE FLUSH WHERE RELEVANT.
 - ALL PAVING SHALL HAVE A SLIP RESISTANCE OF P4 AS PER AS4586.

1 STOCK ROUTE RESERVE NORTH - SHEET 2
LANDSCAPE PLAN 1:250 @ A1

LEGEND

EXISTING

- TREES to be protected and retained
- TREE PROTECTION ZONE (TPZ) Refer Tree Protection Notes on Cover Page
- MULCHED GARDEN BEDS. Retain and protect
- EXISTING PICNIC SETTINGS on concrete slabs. Retain and protect.

PROPOSED

- TREES Refer plant schedule
- SHRUBS
- MULCHED GARDEN BEDS WITH SPADE EDGING
- MULCH ONLY - NO EXCAVATION UNLESS APPROVED Refer Details and Specifications
- COMPACTED GRANITIC GRAVEL WITH STEEL EDGING
- FURNITURE ON CONCRETE SLABS Refer Details and Specifications
- GRASSING (SEEDING) Refer Details and Specifications
- BANK REHABILITATION WORKS Refer Details and Specifications
- PLANT TAG. Refer Plant Schedule
- FURNITURE. Refer Furniture Schedule
- SHARED PATH 2.5m WIDE Refer Civil Dwgs
- FENCE. Refer Civil Dwgs.
- BOLLARDS. Refer Civil Dwgs.
- LOCKABLE GATE. Refer Civil Dwgs.

C:\Users\Fiona\OneDrive\Documents\2023\23050 Wodonga Creek Activation\ACAD\L-23050_STOCK ROUTE RESERVE NORTH.dwg 03/11/2025 11:15 PM

Revision	Revision Date	Revision Description	Issued By
A	25/11/2025	PRELIMINARY DRAFT ISSUE FOR REVIEW - WIP	TMW
B	01/05/2026	ISSUE FOR TENDER	TMW
C	18/05/2026	RE-ISSUE FOR TENDER	FIS



PO Box 1198 Albury NSW 2640
M 0423 811306
E fiona@yonderstudio.com.au
www.yonderstudio.com.au
ABN 68 437 343 209

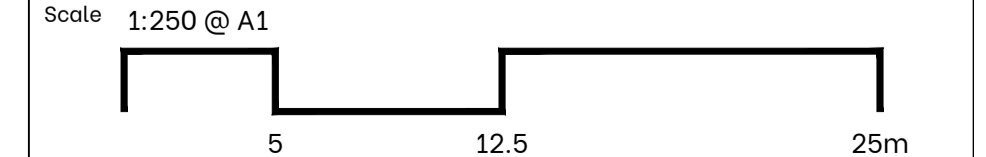
Client **WOODWARD LAND AND CIVIL**

Project **WODONGA CREEK ACTIVATION PROJECT LANDSCAPE WORKS**

Sheet Title **LANDSCAPE PLAN: STOCK ROUTE RESERVE NTH - 2**

Drawing No **L-23050-104** **C**

Designed By FS/TW
Drawn By TMW
Reviewed By FS



© 2022 Copyright. Copyright of designs is retained by Yonder Landscape Architecture. Written approval is required for reproduction.