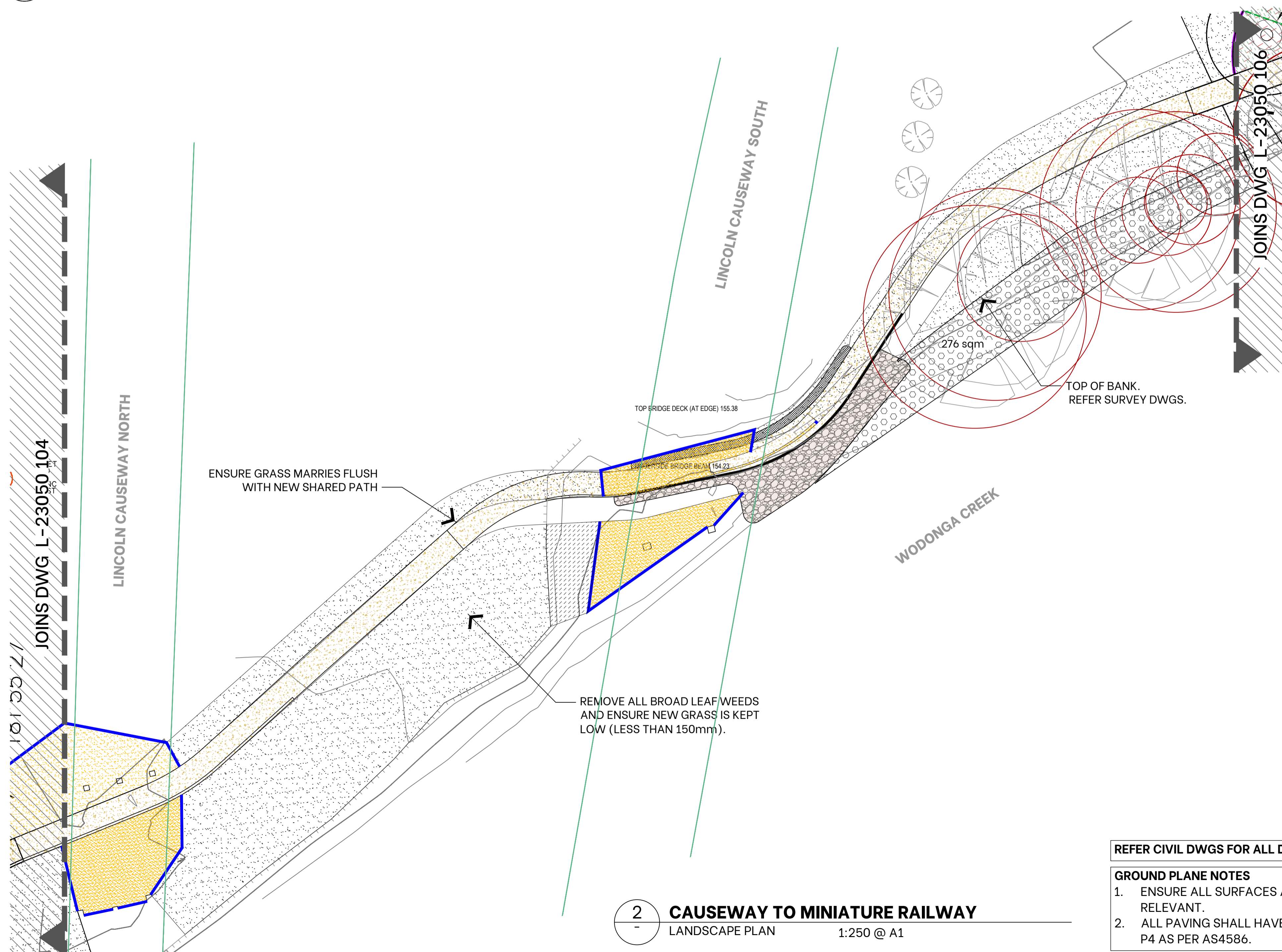


1 LINCOLN CAUSEWAY / DIAMOND PARK - KEY PLAN
1:1,500 @ A1



2 CAUSEWAY TO MINIATURE RAILWAY
LANDSCAPE PLAN 1:250 @ A1

REFER CIVIL DWGS FOR ALL DRAINAGE AND SERVICING

GROUND PLANE NOTES

- ENSURE ALL SURFACES ARE FLUSH WHERE RELEVANT.
- ALL PAVING SHALL HAVE A SLIP RESISTANCE OF P4 AS PER AS4586.

LEGEND

EXISTING

- TREES to be protected and retained
- TREE PROTECTION ZONE (TPZ) Refer Tree Protection Notes on Cover Page
- TREES to be protected and retained

PROPOSED

- Ai** TREES Refer plant schedule
- SHRUBS
- MULCHED GARDEN BEDS WITH SPADE EDGING
- MULCH ONLY - NO EXCAVATION UNLESS APPROVED Refer Details and Specification
- COMPACTED GRANITE GRAVEL WITH 150mm WIDE CONCRETE EDGE Refer Details and Specification
- GRASSING (SEEDING) Refer Details and Specification
- BANK REHABILITATION WORKS Refer Details and Specification
- FURNITURE Refer Schedule and Specification
- ZONE 4** PLANT TAG. Refer Plant Schedule
- F4 FURNITURE. Refer Furniture Schedule
- SHARED PATH 2.5m WIDE Refer Civil Dwgs
- FENCE. Refer Civil Dwgs.
- BOLLARDS. Refer Civil Dwgs.
- LOCKABLE GATE. Refer Civil Dwgs.

C:\Users\Fiona\OneDrive\Documents\2023\23050 Wodonga Creek Activation\ACAD\L-23050_DIAMOND PARK.dwg (2023-3-16 PM)

Revision	Revision Date	Revision Description	Issued By
A	25/11/2025	PRELIMINARY DRAFT ISSUE FOR REVIEW - WIP	TMW
B	01/05/2026	ISSUE FOR TENDER	TMW
C	18/05/2026	RE-ISSUE FOR TENDER	FIS

yonder.

PO Box 1198 Albury NSW 2640
M 0423 811308
E fiona@yonderstudio.com.au
www.yonderstudio.com.au
ABN 68 437 343 209

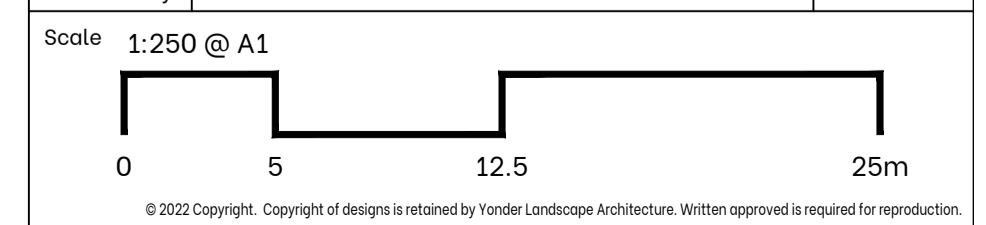
Client **WOODWARD LAND AND CIVIL**

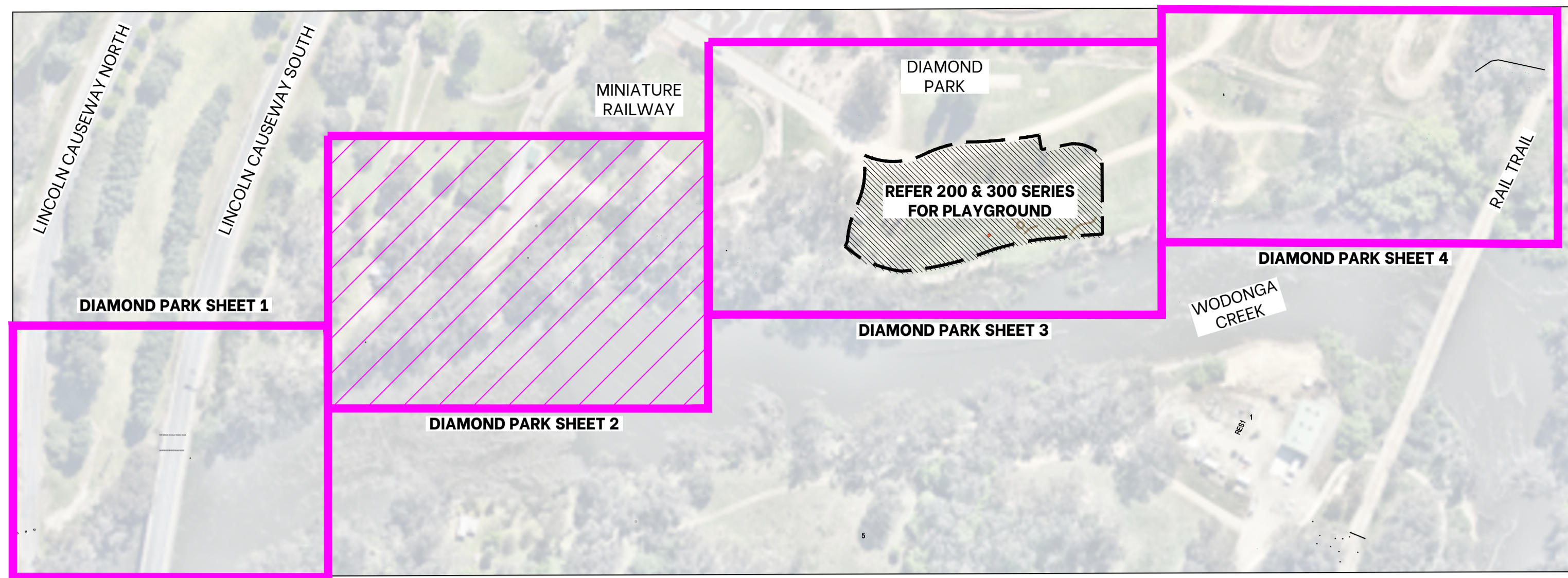
Project **WODONGA CREEK ACTIVATION PROJECT LANDSCAPE WORKS**

Sheet Title **LANDSCAPE PLAN - DIAMOND PARK SHT 1**

Drawing No **L-23050-105** **C**

Designed By FS/TW
Drawn By TMW
Reviewed By FIS





1 LINCOLN CAUSEWAY / DIAMOND PARK - KEY PLAN
1:1,500 @ A1

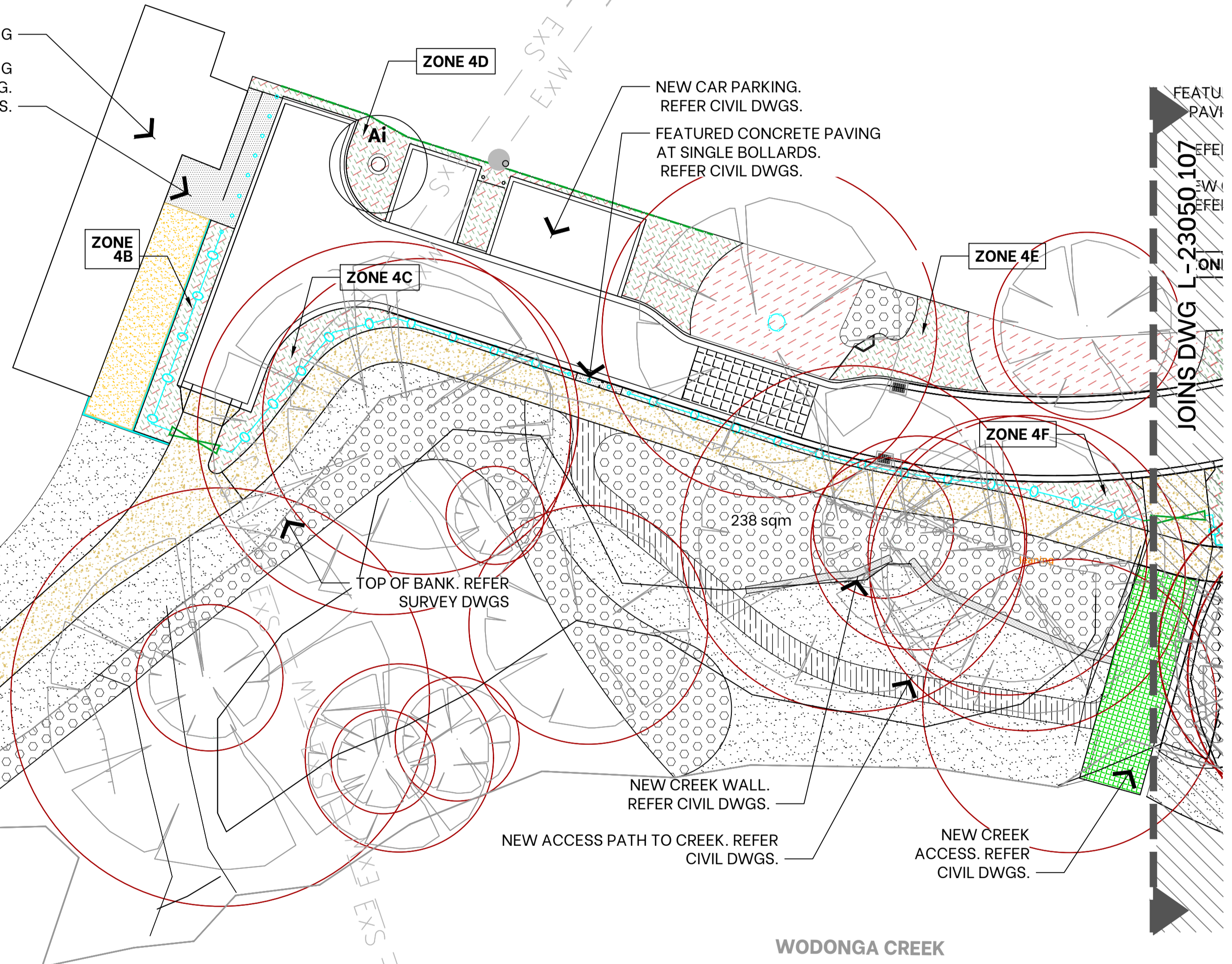
- PLANTING NOTES**
1. THE LANDSCAPE CONTRACTOR SHALL CROSS CHECK ALL PLANT QUANTITIES ON THE PLANT SCHEDULE TO THE LANDSCAPE PLAN PRIOR TO ORDERING OF PLANTS.
 2. ALL TREES, SHRUBS AND GROUNDCOVERS SHALL BE PLANTED WITH WATER RETENTION CRYSTALS TO REDUCE THE REQUIREMENT OF ONGOING WATERING. ADD WATER CRYSTALS TO EACH PLANTING HOLE IN ACCORDANCE WITH THE MANUFACTURERS SPECIFICATION.
 3. ALL TREES, SHRUBS AND GROUNDCOVERS SHALL ALSO BE PLANTED WITH SLOW RELEASE FERTILISER. ENSURE THAT THE FERTILISER FOR NATIVE PLANTS ARE LOW PHOSPHOROUS AND IS FORMULATED SPECIFICALLY FOR NATIVE PLANTS.

REFER CIVIL DWGS FOR ALL DRAINAGE AND SERVICING

GROUND PLANE NOTES

1. ENSURE ALL SURFACES ARE FLUSH WHERE RELEVANT.
2. ALL PAVING SHALL HAVE A SLIP RESISTANCE OF P4 AS PER AS4586.

MINIATURE RAILWAY BUILDING
FEATURE CONCRETE PAVING AT ENTRANCE TO BUILDING. REFER CIVIL DWGS.



LEGEND

EXISTING

- TREES to be protected and retained
- TREE PROTECTION ZONE (TPZ) Refer Tree Protection Notes on Cover Page
- TREES to be protected and retained

PROPOSED

- Ai** TREES Refer plant schedule
- SHRUBS
- MULCHED GARDEN BEDS WITH SPADE EDGING
- MULCH ONLY - NO EXCAVATION UNLESS APPROVED Refer Details and Specification
- COMPACTED GRANITE GRAVEL WITH 150mm WIDE CONCRETE EDGE
- GRASSING (SEEDING) Refer Details and Specification
- BANK REHABILITATION WORKS Refer Details and Specification
- FURNITURE Refer Schedule and Specification
- ZONE 4** PLANT TAG. Refer Plant Schedule
- F4 FURNITURE. Refer Furniture Schedule
- SHARED PATH 2.5m WIDE Refer Civil Dwgs
- FENCE. Refer Civil Dwgs.
- BOLLARDS. Refer Civil Dwgs.
- LOCKABLE GATE. Refer Civil Dwgs.

C:\Users\Fiona\Documents\2023\23050 Wodonga Creek Activation\CAD\L-23050_DIAMOND PARK.dwg 2024/3/14 PM

Revision	Revision Date	Revision Description	Issued By
A	25/11/2025	PRELIMINARY DRAFT ISSUE FOR REVIEW - WIP	TMW
B	01/05/2026	ISSUE FOR TENDER	TMW
C	18/05/2026	RE-ISSUE FOR TENDER	FIS

yonder.

PO Box 1198 Albury NSW 2640
M 0423 811308
E fiona@yonderstudio.com.au
www.yonderstudio.com.au
ABN 68 437 343 209

Client: **WOODWARD LAND AND CIVIL**

Project: **WODONGA CREEK ACTIVATION PROJECT LANDSCAPE WORKS**

Sheet Title: **LANDSCAPE PLAN - DIAMOND PARK SHT 2**

Drawing No: **L-23050-106 C**

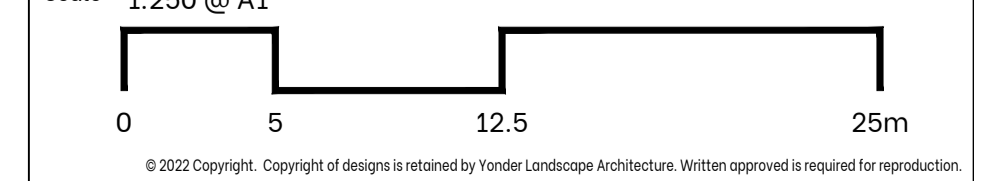
Designed By: FS/TW
Drawn By: TMW
Reviewed By: FS

Scale: 1:250 @ A1

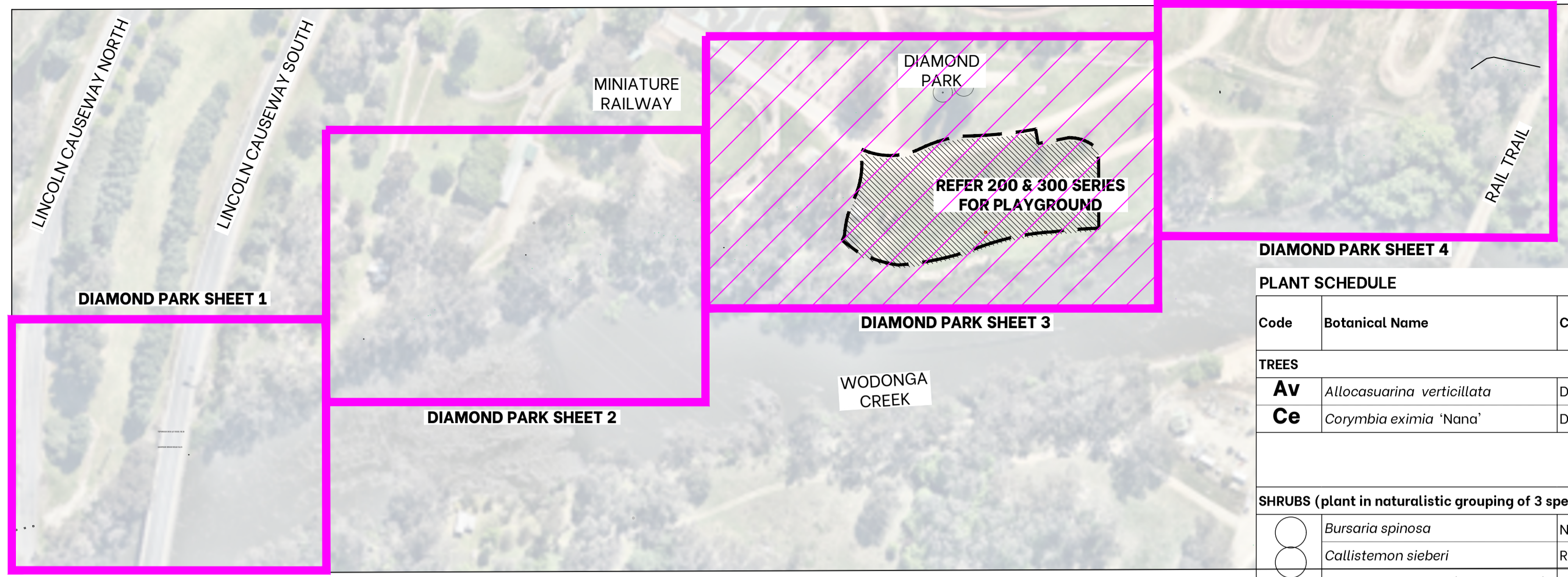
PLANT SCHEDULE

Code	Botanical Name	Common Name	Mature Size (H x W)	Min. Supply Size	Density	QTY						
						ZONE 4A	ZONE 4B	ZONE 4C	ZONE 4D	ZONE 4E	ZONE 4F	
TREES												
Ai	<i>Acacia implexa</i>	Lightwood	8x7m	27L pot, 1.5m H	As shown	1						
Ec	<i>Eucaalyptus camaldulensis</i>	River Red Gum	30x15m	27L pot, 1.5m H	As shown	1						
GROUNDCOVERS AND GRASSY PLANTS												
						Area (m2)						
						(plants/m2)	71	32	47	83	40	37.5
	<i>Carex appressa</i>	Sedge	1x1m	tubestock	2	28	0	0	0	0	0	
	<i>Dianella revoluta</i>	Blueberry Lily	1x1m	tubestock	2	28	0	0	0	0	0	
	<i>Hardenbergia violacea</i>	Purple Coral Pea	3x2m	tubestock	1	21	0	0	0	0	0	
	<i>Lomandra filiformis</i>	Wattle Mat-Rush	0.3-0.6x0.3m	tubestock	3	32	48	71	37	18	17	
	<i>Poa labillardierei</i>	Common Tussock Grass	1.2x0.5m	tubestock	3	32	48	71	37	18	17	

2 MINIATURE RAILWAY TURNAROUND TO EMERGENCY ACCESS
LANDSCAPE PLAN 1:250 @ A1



© 2022 Copyright. Copyright of designs is retained by Yonder Landscape Architecture. Written approval is required for reproduction.



1 LINCOLN CAUSEWAY / DIAMOND PARK - KEY PLAN
1:1,500 @ A1

REFER CIVIL DWGS FOR ALL DRAINAGE AND SERVICING

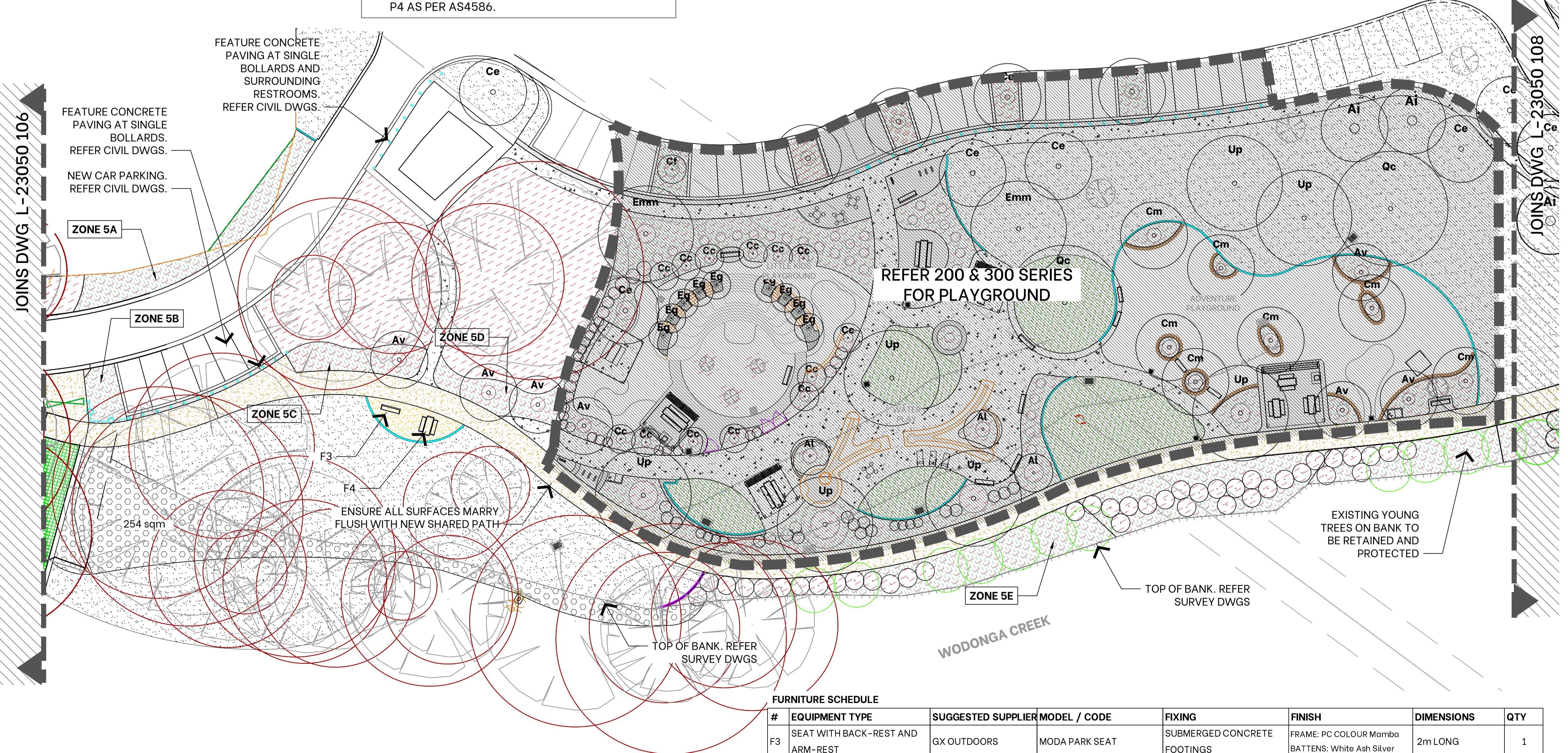
GROUND PLANE NOTES

- ENSURE ALL SURFACES ARE FLUSH WHERE RELEVANT.
- ALL PAVING SHALL HAVE A SLIP RESISTANCE OF P4 AS PER AS4586.

DIAMOND PARK SHEET 4

PLANT SCHEDULE

Code	Botanical Name	Common Name	Mature Size (H x W)	Min. Supply Size	Density	QTY					
TREES											
Av	<i>Allocasuarina verticillata</i>	Drooping She-oak	10x6m	27L pot, 1.5m H	As shown	3					
Ce	<i>Corymbia eximia 'Nana'</i>	Dwarf Yellow Bloodwood	6-8x4-6m	27L pot, 1.5m H	As shown	1					
SHRUBS (plant in naturalistic grouping of 3 species)											
	<i>Bursaria spinosa</i>	Native Blackthorn	4x3m	tubestock	As shown	0	0	0	0	10	
	<i>Callistemon sieberi</i>	River Bottlebrush	3-4x2-3m	tubestock	As shown	0	0	0	0	10	
	<i>Callistemon sieberi 'Sugar Candy'</i>	Sugar Candy Bottlebrush	3x2m	150mmpot	As shown	0	0	0	0	10	
	<i>Leptospermum obovatum</i>	River Tea-tree	2-3x2-3m	tubestock	As shown	0	0	0	0	10	
GROUNDCOVERS AND GRASSY PLANTS											
	<i>Carex appressa</i>	Sedge	1x1m	tubestock	2	29	0	15	14	86	
	<i>Dianella revoluta</i>	Blueberry Lily	1x1m	tubestock	2	29	0	15	14	86	
	<i>Hardenbergia violacea</i>	Purple Coral Pea	3x2m	tubestock	1	22	0	11	10	65	
	<i>Lomandra filiformis</i>	Wattle Mat-Rush	0.3-0.6x0.3m	tubestock	3	33	32	17	16	97	
	<i>Poa labillardierei</i>	Common Tussock Grass	1.2x0.5m	tubestock	3	33	32	17	16	97	



FURNITURE SCHEDULE

#	EQUIPMENT TYPE	SUGGESTED SUPPLIER	MODEL / CODE	FIXING	FINISH	DIMENSIONS	QTY
F3	SEAT WITH BACK-REST AND ARM-REST	GX OUTDOORS	MODA PARK SEAT	SUBMERGED CONCRETE FOOTINGS	FRAME: PC COLOUR Mamba BATTENS: White Ash Silver	2m LONG	1
F4	SHORT PICNIC TABLE SETTING WHEELCHAIR ACCESSIBLE ONE END	GX OUTDOORS	MODA TABLE SETTING	SUBMERGED CONCRETE FOOTINGS	FRAME: PC COLOUR Mamba BATTENS: White Ash Silver	TABLE 2.0mL, WITH BENCH 1.8mL	1

LEGEND

EXISTING

- TREES to be protected and retained
- TREE PROTECTION ZONE (TPZ) Refer Tree Protection Notes on Cover Page
- TREES to be protected and retained

PROPOSED

- TREES Refer plant schedule
- SHRUBS
- MULCHED GARDEN BEDS WITH SPADE EDGING
- MULCH ONLY - NO EXCAVATION UNLESS APPROVED Refer Details and Specification
- COMPACTED GRANITE GRAVEL WITH 150mm WIDE CONCRETE EDGE
- GRASSING (SEEDING) Refer Details and Specification
- BANK REHABILITATION WORKS Refer Details and Specification
- FURNITURE Refer Schedule and Specification
- PLANT TAG. Refer Plant Schedule
- FURNITURE. Refer Furniture Schedule
- SHARED PATH 2.5m WIDE Refer Civil Dwgs
- FENCE. Refer Civil Dwgs.
- BOLLARDS. Refer Civil Dwgs.
- LOCKABLE GATE. Refer Civil Dwgs.

C:\Users\Fiona\Documents\2023\23050 Wodonga Creek Activation\LCAD\L-23050_DIAMOND PARK.dwg (2024-3-16 PM)

Revision	Revision Date	Revision Description	Issued By
A	25/11/2025	PRELIMINARY DRAFT ISSUE FOR REVIEW - WIP	TMW
B	01/05/2026	ISSUE FOR TENDER	TMW
C	18/05/2026	RE-ISSUE FOR TENDER	FIS

yonder.

PO Box 1198 Albury NSW 2640
M 0423 811398
E fiona@yonderstudio.com.au
www.yonderstudio.com.au
ABN 68 437 343 209

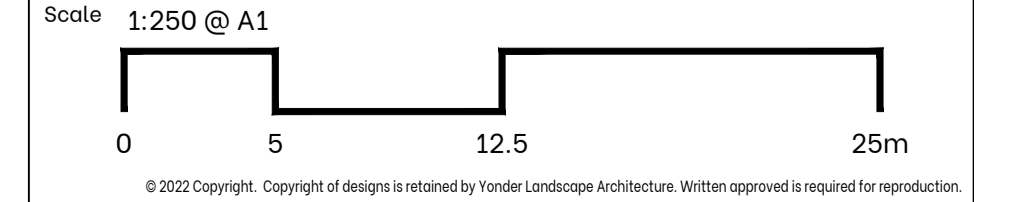
Client: **WOODWARD LAND AND CIVIL**

Project: **WODONGA CREEK ACTIVATION PROJECT LANDSCAPE WORKS**

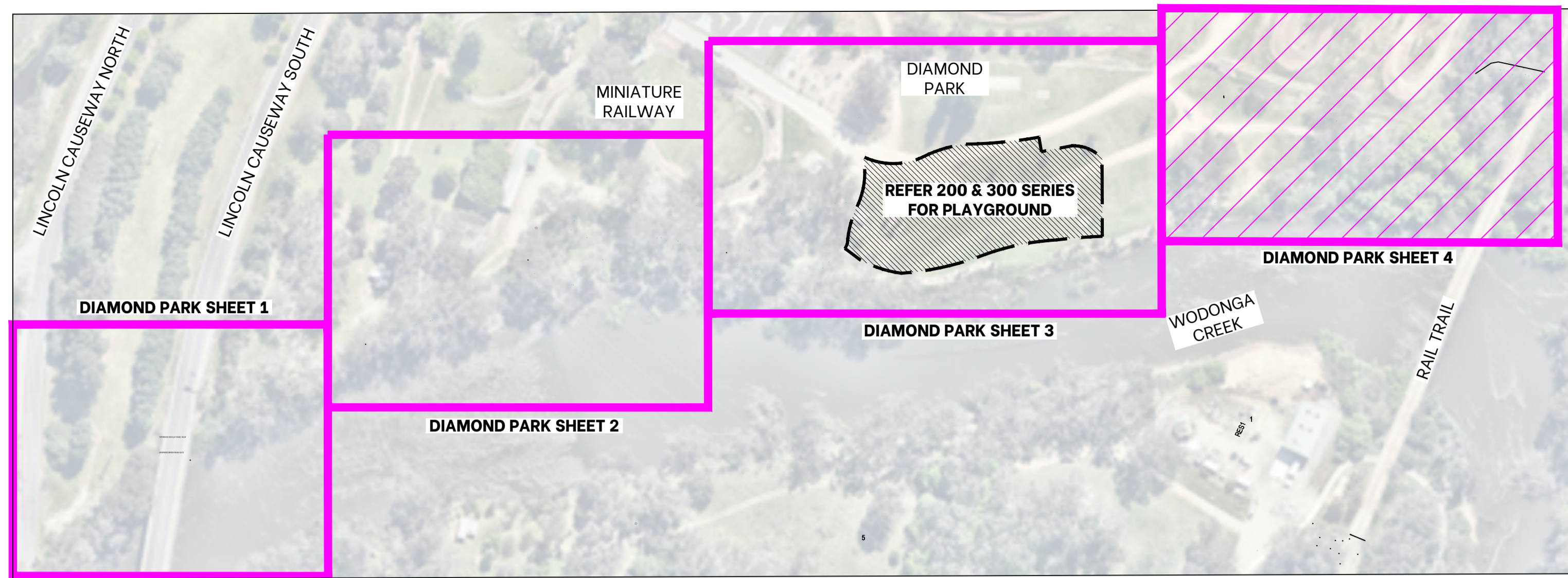
Sheet Title: **LANDSCAPE PLAN - DIAMOND PARK SHT 3**

Drawing No: **L-23050-107** **C**

Designed By: FS/TW
Drawn By: TMW
Reviewed By: FS



2 EMERGENCY ACCESS TO PLAYGROUND EAST
LANDSCAPE PLAN 1:250 @ A1

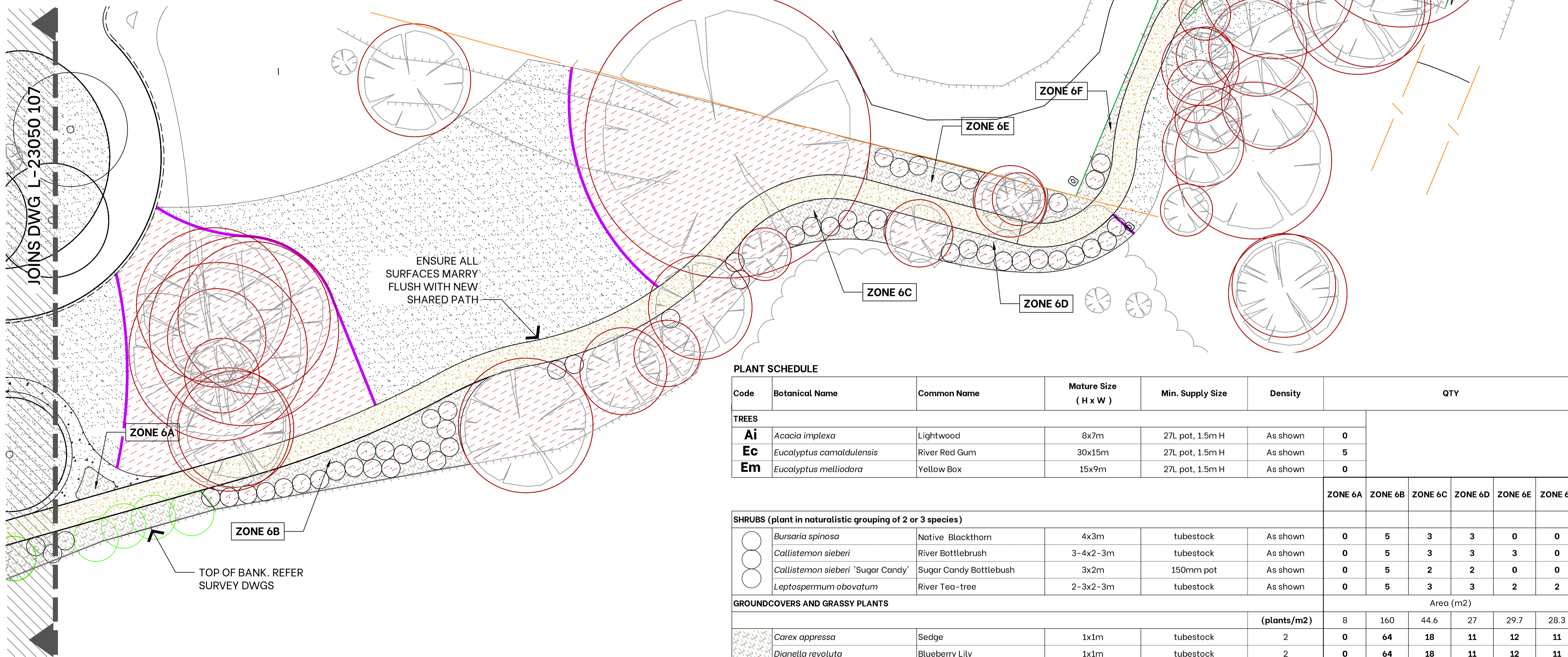


1 LINCOLN CAUSEWAY / DIAMOND PARK - KEY PLAN
1:1,500 @ A1

REFER CIVIL DWGS FOR ALL DRAINAGE AND SERVICING

GROUND PLANE NOTES

- ENSURE ALL SURFACES ARE FLUSH WHERE RELEVANT.
- ALL PAVING SHALL HAVE A SLIP RESISTANCE OF P4 AS PER AS4586.



2 PLAYGROUND EAST TO RAIL TRAIL
LANDSCAPE PLAN 1:250 @ A1

LEGEND

EXISTING

- TREES to be protected and retained
- TREE PROTECTION ZONE (TPZ) Refer Tree Protection Notes on Cover Page
- TREES to be protected and retained

PROPOSED

- TREES Refer plant schedule
- SHRUBS
- MULCHED GARDEN BEDS WITH SPADE EDGING
- MULCH ONLY - NO EXCAVATION UNLESS APPROVED Refer Details and Specification
- COMPACTED GRANITE GRAVEL WITH 150mm WIDE CONCRETE EDGE
- GRASSING (SEEDING) Refer Details and Specification
- BANK REHABILITATION WORKS Refer Details and Specification
- FURNITURE Refer Schedule and Specification
- PLANT TAG. Refer Plant Schedule
- FURNITURE. Refer Furniture Schedule
- SHARED PATH 2.5m WIDE Refer Civil Dwgs
- FENCE. Refer Civil Dwgs.
- BOLLARDS. Refer Civil Dwgs.
- LOCKABLE GATE. Refer Civil Dwgs.

Revision	Revision Date	Revision Description	Issued By
A	25/11/2025	PRELIMINARY DRAFT ISSUE FOR REVIEW - WIP	TMW
B	01/05/2026	ISSUE FOR TENDER	TMW
C	18/05/2026	RE-ISSUE FOR TENDER	FIS

yonder.
PO Box 1198 Albury NSW 2640
M 0423 811308
E fiona@yonderstudio.com.au
www.yonderstudio.com.au
ABN 68 437 343 209

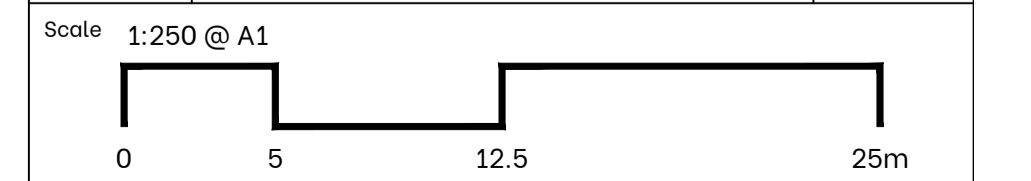
Client **WOODWARD LAND AND CIVIL**

Project **WODONGA CREEK ACTIVATION PROJECT LANDSCAPE WORKS**

Sheet Title **LANDSCAPE PLAN - DIAMOND PARK SHT 4**

Drawing No **L-23050-108 C**

Designed By FS/TW
Drawn By TMW
Reviewed By FS



© 2022 Copyright. Copyright of designs is retained by Yonder Landscape Architecture. Written approval is required for reproduction.

PLANT SCHEDULE

Code	Botanical Name	Common Name	Mature Size (H x W)	Min. Supply Size	Density	QTY						
TREES												
Ai	<i>Acacia implexa</i>	Lightwood	8x7m	27L pot, 1.5m H	As shown	0						
Ec	<i>Eucalyptus camaldulensis</i>	River Red Gum	30x15m	27L pot, 1.5m H	As shown	5						
Em	<i>Eucalyptus melliodora</i>	Yellow Box	15x9m	27L pot, 1.5m H	As shown	0						
SHRUBS (plant in naturalistic grouping of 2 or 3 species)												
	<i>Bursaria spinosa</i>	Native Blackthorn	4x3m	tubestock	As shown	0	5	3	3	0	0	
	<i>Callistemon sieberi</i>	River Bottlebrush	3-4x2-3m	tubestock	As shown	0	5	3	3	3	0	
	<i>Callistemon sieberi</i>	'Sugar Candy'	3x2m	150mm pot	As shown	0	5	2	2	0	0	
	<i>Leptospermum obovatum</i>	River Tea-tree	2-3x2-3m	tubestock	As shown	0	5	3	3	2	2	
GROUNDCOVERS AND GRASSY PLANTS							Area (m2)					
					(plants/m2)	8	160	44.6	27	29.7	28.3	
	<i>Carex appressa</i>	Sedge	1x1m	tubestock	2	0	64	18	11	12	11	
	<i>Dianella revoluta</i>	Blueberry Lily	1x1m	tubestock	2	0	64	18	11	12	11	
	<i>Hardenbergia violacea</i>	Purple Coral Pea	3x2m	tubestock	1	0	48	13	8	9	8	
	<i>Lomandra filiformis</i>	Wattle Mat-Rush	0.3-0.6x0.3m	tubestock	3	12	240	20	12	13	13	
	<i>Poa labillardierei</i>	Common Tussock Grass	1.2x0.5m	tubestock	3	12	240	20	12	13	13	