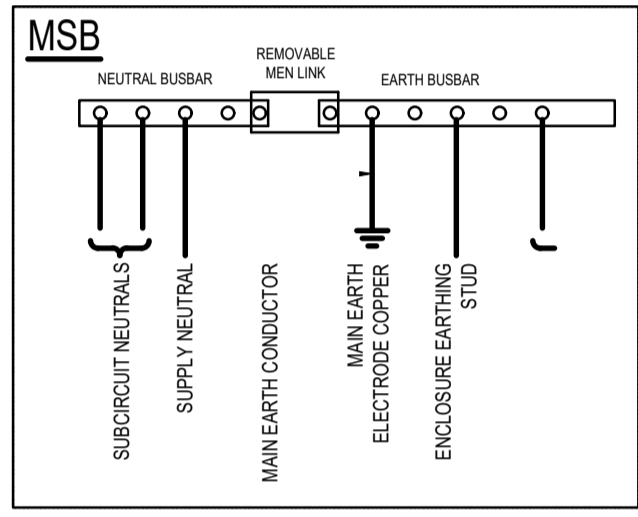
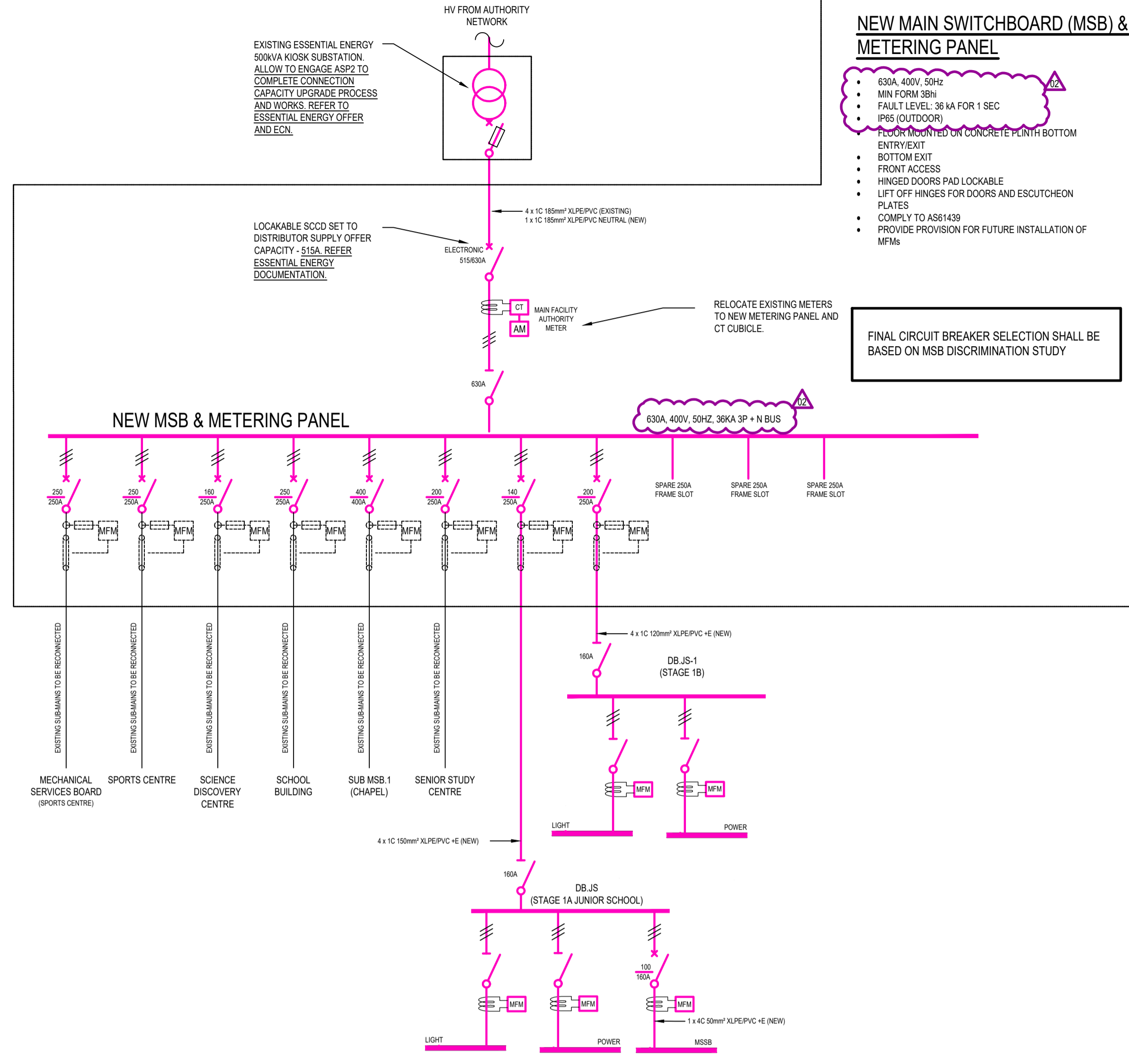


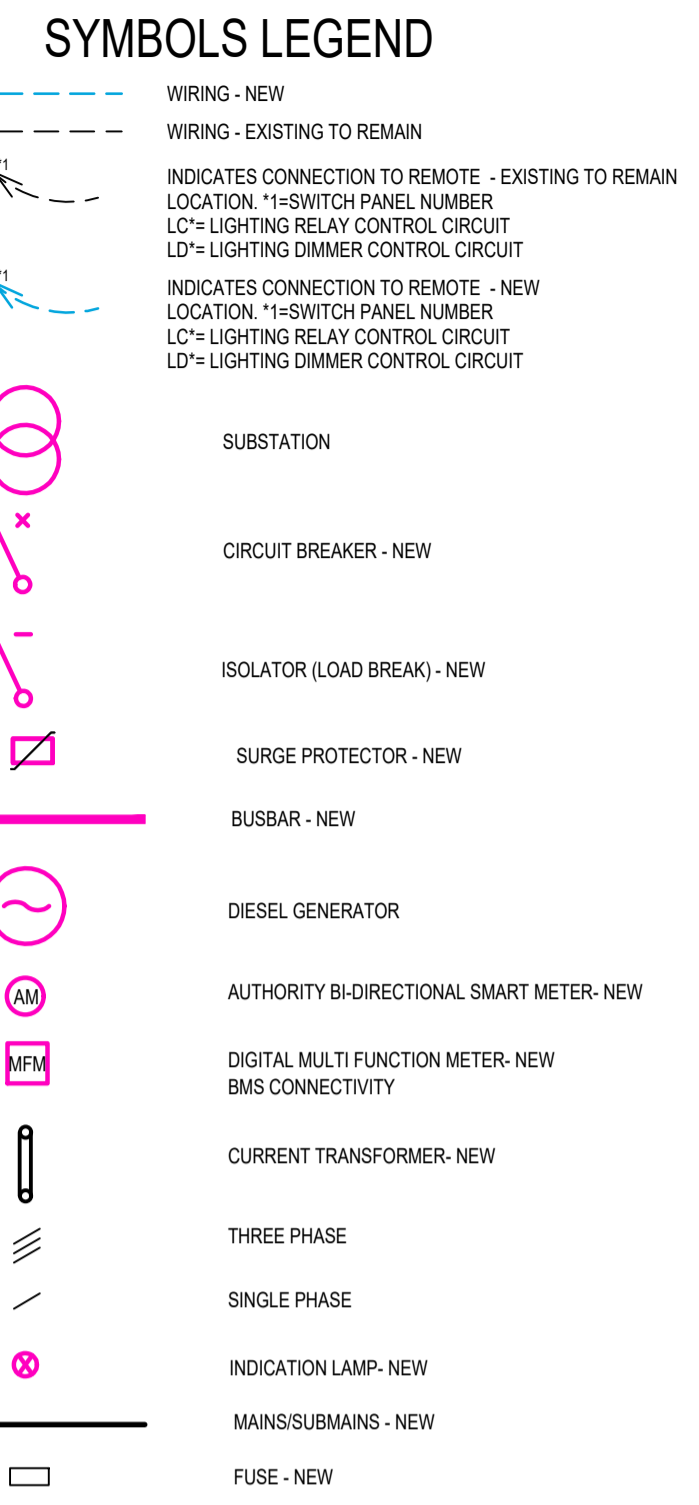
- EXISTING MSB TO BE REMOVED. CONSUMER MAINS CABLES TO BE RECONNECTED TO NEW MSB SUBSTATION FACILITY AND DUPLICATED WITH SECOND SET.
- ALL EXISTING DISTRIBUTION BOARDS SUBMANS ARE TO BE RECONNECTED TO NEW MSB MCCBs.
- EXISTING SPD MUST BE CHECKED FOR CAPACITY CONTROL TO MATCH ESSENTIAL ENERGY OFFER. ALLOW TO ENGAGE ASP2 TO COMPLETE CAPACITY UPGRADE WORKS.
- MAIN SWITCH SHALL BE ABLE TO BE FITTED WITH APPROVED POWER INDUSTRY LOCK. LOCKABLE ON/OFF.
- THE SCHEMATIC IS INDICATIVE ONLY AND REPRESENTS THE INTENTION OF HOW THE SWITCHBOARDS SHALL OPERATE.
- THE ELECTRICAL CONTRACTOR SHALL SUBMIT SHOP DRAWINGS AND A DISCRIMINATION STUDY FOR REVIEW BY THE CONSULTANT PRIOR TO MANUFACTURE OF THE SWITCHBOARDS.
- ALL CIRCUIT BREAKERS SHALL BE OF SAME MANUFACTURE.
- REFER TO EARTHING DETAIL FOR EARTHING ARRANGEMENTS.
- THE SWITCHBOARDS ARRANGEMENTS SHALL BE REVIEWED AND APPROVED BY REC AND AUTHORITY ELECTRICAL INSPECTOR PRIOR TO MANUFACTURE OF SWITCHBOARDS.
- ALL CHECK METERING IN MSB (AND IN EACH SUB BOARD) TO BE BMS CONNECTION CAPABLE. CONFIRM THE BMS PROTOCOL PRIOR TO MANUFACTURE.
- CHANGE OVER TO NEW MSB TO OCCUR AT SCHOOL HOLIDAY PERIOD OR WEEKEND OUT OF HOURS WORKS AS AGREED WITH CLIENT. OUT OF HOURS WORKS SHALL BE ALLOWED FOR.



- DETAIL EARTHING DETAIL**
- THE EARTHING SYSTEM SHALL COMPLY TO AS/NZS 3000 REQUIREMENTS.
 - ALL EARTH CABLES COPPER AND PVC (GREEN/YELLOW) INSULATED.

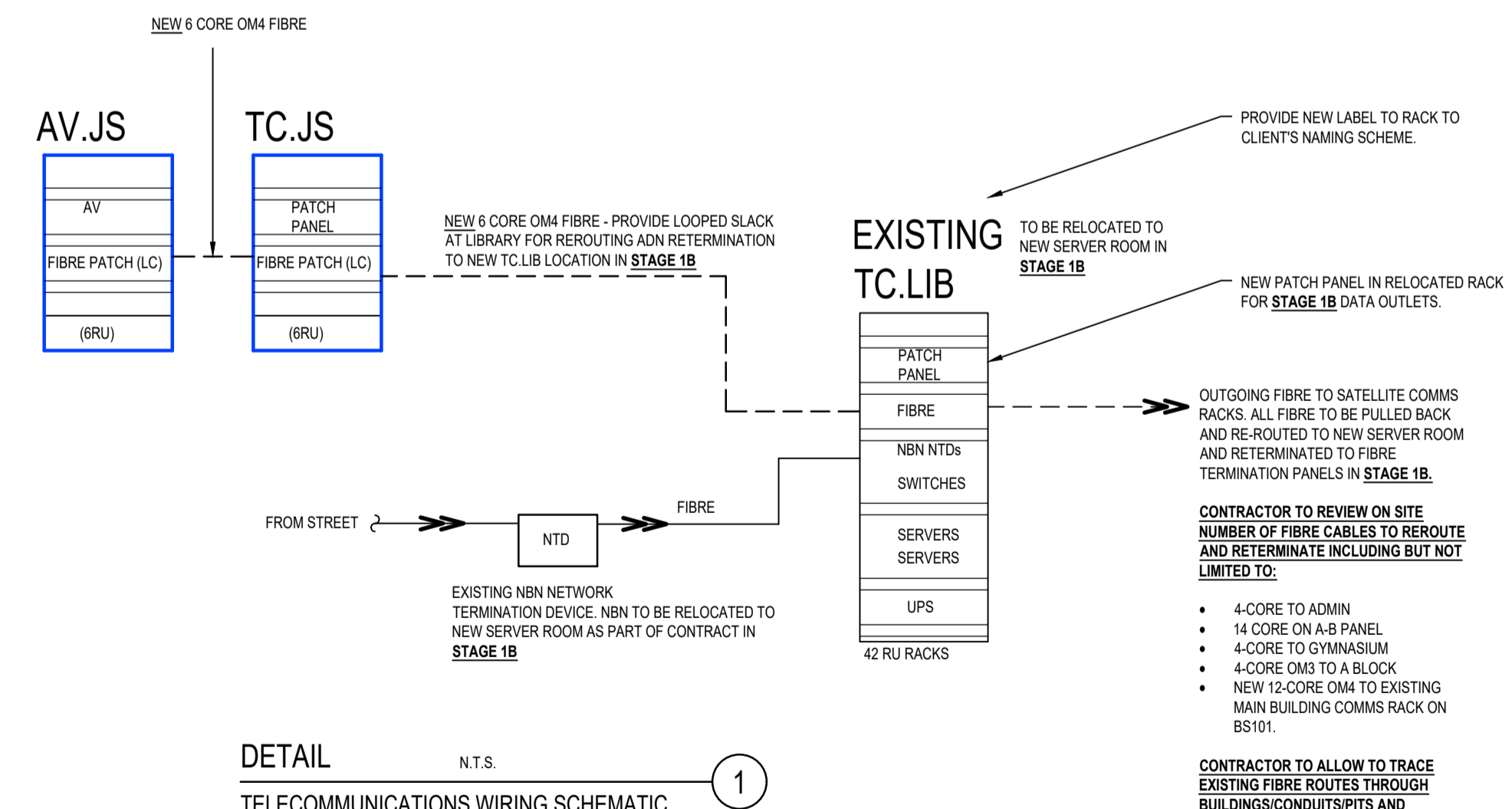


- NEW MAIN SWITCHBOARD (MSB) & METERING PANEL**
- 630A, 400V, 50Hz
 - MIN FORM 30N
 - FAULT LEVEL: 36 kA FOR 1 SEC
 - IP65 (OUTDOOR)
 - FLOOR MOUNTED ON CONCRETE PLINTH BOTTOM ENTRY/EXIT
 - BOTTOM EXIT
 - FRONT ACCESS
 - HINGED DOORS PAD LOCKABLE
 - LIFT OFF HINGES FOR DOORS AND ESCUTCHEON PLATES
 - COMPLY TO AS61439
 - PROVIDE PROVISION FOR FUTURE INSTALLATION OF MFMs
- FINAL CIRCUIT BREAKER SELECTION SHALL BE BASED ON MSB DISCRIMINATION STUDY**



SCHEDULE OF LIGHT FITTINGS

DES.	MANUFACTURE	MODEL NO.	FITTING TYPE / MOUNTING	LAMP TYPE	LAMP COLOUR	FITTING COLOUR	IP RATING	DIMMING	COMMENTS
A	LIMELITE	LIN-P300-XLG-1200	RECESSED LINEAR	23W LED	4000K	WHITE	IP20	NO	
D	ELS	LX110.500.80.94.61	RECESSED DOWNLIGHT	19W LED	4000K	WHITE		NO	
D1	ELS	LX90.250.80.94.61	RECESSED DOWNLIGHT	10W LED	4000K	WHITE		NO	
D2	LIGMAN	NI-80501-S-W-8030	RECESSED DOWNLIGHT	13W LED	3000K	STAINLESS STEEL	IP65	NO	
E	CLEVERTRONICS	CLIFE-PRO-SM	SURFACE EMERGENCY LUMINAIRE	2.3W LED	N/A	WHITE	IP20	NO	AS.2293; CO=D80 C90=D80
E1	CLEVERTRONICS	CLIFE-PRO-CT	RECESSED EMERGENCY LIGHT					NO	AS.2293; CO=D80 C90=D80
F	CLEVERTRONICS	ULTRABLADE PRO	SURFACE MOUNTED EXT	3.7W LED	N/A	WHITE	IP20	NO	
K1	ELS	SK50.12.94.F.XXXX	SURFACE MOUNTED LINEAR	12Wm LED	4000K	TBC	IP54	NO	
K2	KLK SYSTEMS	LEDSTREAM CM FOCUS	SURFACE MOUNTED LINEAR	24W LED	4000K	TBC		DALI	
K3	KLK SYSTEMS	KALLI AKWA 060 BOX D	SURFACE MOUNTED LINEAR	16Wm LED	4000K	TBC	IP66	NO	
P1	LIGMAN	BIU-90008.T4	POLE MOUNTED	55W LED	4000K	BLACK	IP66	NO	8m POLES TO CARPARK AREA - POWDERCOATED BLACK
P2	LIGMAN	BIU-90008.T2	POLE MOUNTED	37W LED	4000K	BLACK	IP66	NO	4m POLES TO PATHWAYS - POWDERCOATED BLACK
S	ELS	NANO 7 RECESSED	RECESSED LED STRIP	6W LED	4000K	WHITE		NO	
U1	ELS	SL30.9.94.F.XXXX	SURFACE MOUNTED LINEAR	9Wm	4000K	TBC	IP54	NO	
U2	LIGMAN	KI-60741-500-M-8030-00	IN-GROUND FLOODLIGHT	12W LED	3000K	STAINLESS STEEL	IP67	NO	



- DETAIL TELECOMMUNICATIONS WIRING SCHEMATIC**
- N.T.S.

02	MSB UPDATES AS CLOSED	30/08/2024	DW
01	INITIAL TENDER ISSUE	20/08/2023	DW
REV	DESCRIPTION OF ISSUE	DATE	INITIAL
1:500	0m 5m 10m 20m 30m	22.5m	
1:200	1m 2m 3m 5m 10m 15m	18m	
1:100	1m 2m 3m 4m 5m 6m 7m 8m 9m	15m	

- Notes**
- THIS DRAWING IS STRICTLY COPYRIGHT & SHALL NOT BE COPIED IN WHOLE OR IN PART WITHOUT THE WRITTEN CONSENT OF BRT CONSULTING ENGINEERS.
 - CONTRACTOR MUST VERIFY ALL DIMENSIONS ON SITE BEFORE COMMENCING ANY WORK OR PREPARING ANY SHOP DRAWINGS.
 - CONTRACTOR TO REFER TO ARCHITECTS REFLECTED CEILING PLANS & DETAIL DRAWINGS FOR EXACT LOCATION OF FITTINGS AND EQUIPMENT.
 - WRITTEN DIMENSIONS TAKE PRECEDENCE OVER SCALED DIMENSIONS.
 - THIS DRAWING IS REQUIRED TO BE PRINTED IN COLOUR. FAILURE TO DO SO MAY RESULT IN LOSS OF INFORMATION.

BRT Consulting Pty Ltd
 159 Victoria Parade
 Collingwood VIC 3066
 03 9417 2971
 melb@brt.com.au

PMDL **mcglashan everist**
 pmdl-mas.com.au
PMDL ARCHITECTURE + DESIGN (A/C) PTY LTD
 PMDL ARCHITECTURE + DESIGN (P/L) PTY LTD ABN 66 062 961 377

Project THE SCOTS SCHOOL - STAGE 1 393 PERRY STREET ALBURY				Title ELECTRICAL SERVICES ELECTRICAL DETAILS 2			
Scale	Creation Date	Drafter	Engineer	Director	Stage Description	Job No	Dwg No
1:100 @ A1	21/03/2024	DG	DW	AG	TH-TENDER ISSUE	12132	E301
							TI
							02