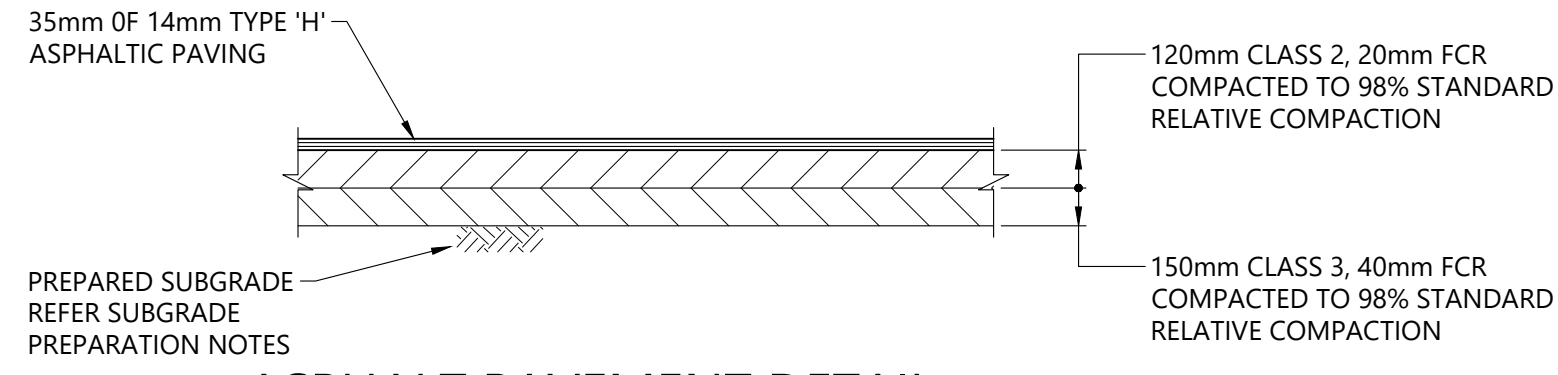


TYPICAL CONCRETE PAVEMENT DETAIL

AT CONNECTION TO EXISTING USE N12 DOWELLS * 250mm LONG AT ALLOW TO PROVIDE TOOLED JOINTS AT 1500mm MAX. CTS. 450 CTS.

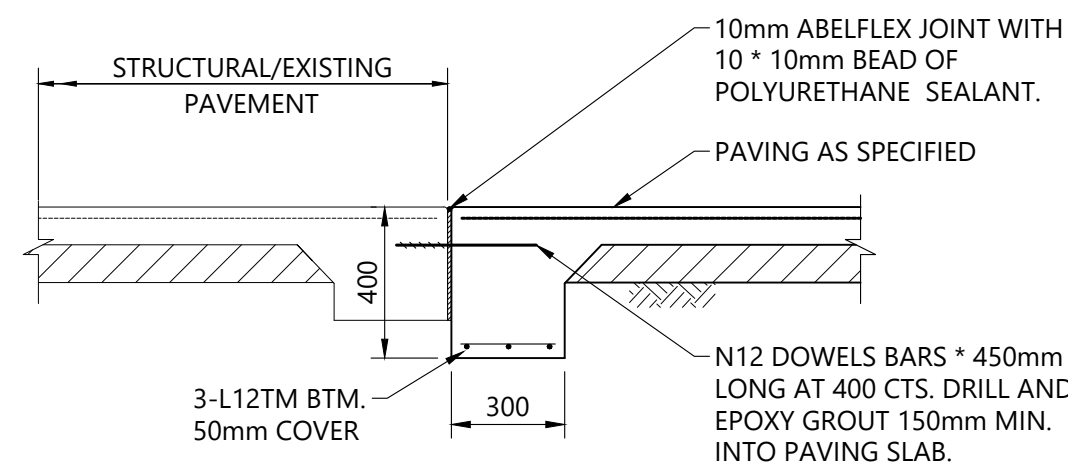


ASPHALT PAVEMENT DETAIL

PREPARED SUBGRADE REFER SUBGRADE PREPARATION NOTES

SUBGRADE PREPARATION NOTES

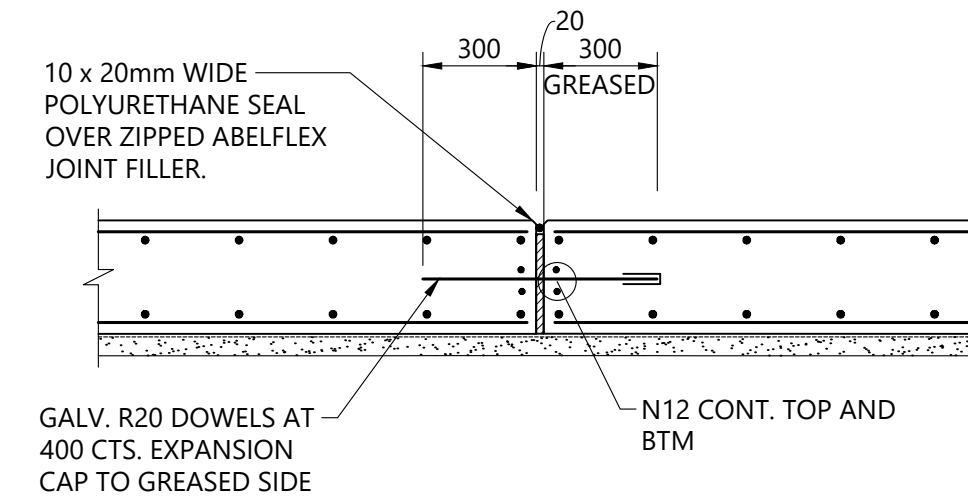
- SHOULD ROCK BE EXPOSED ABOVE SUBGRADE LEVEL OR AT A DEPTH WHICH IS 150MM OR LESS BELOW SUBGRADE LEVEL. IT SHOULD BE OVER-EXCAVATED TO A DEPTH OF AT LEAST 150MM BELOW SUBGRADE LEVEL. THE FORMATION SHOULD THEN BE INFILLED TO SUBGRADE LEVEL USING CLASS 3 CRUSHED ROCK.
- SUBGRADE SHOULD BE COMPACTED TO A MINIMUM DRY DENSITY OF 98% OF STANDARD COMPACTION AT MOISTURE CONTENT OF 2% OF STANDARD OPTIMUM MOISTURE CONTENT
- EXCAVATE IN AREAS NEEDED TO A LEVEL REQUIRED TO CONSTRUCT NEW PAVEMENT. COMPACT SUB-GRADE WITH 4 PASSES EACH WAY OF A VIBRATING SMOOTH WHEELED ROLLER OF NOT LESS THAN 10 TONNE/m
- REMOVE ANY SOFT SPOTS DETECTED AND REPLACE WITH CLASS 4, 40mm CRUSHED ROCK PLACED AND COMPACTED IN 150mm LOOSE THICKNESS LAYERS TO 98% STANDARD RELATIVE COMPACTION.
- SUBGRADE IMPROVEMENT CAN BE PROVIDED BY STABILISING THE CLAY WITH LIME RATHER THAN USING AN IMPORTED SELECT FILL. IN SITU STABILISATION OF THE FORMATION SHALL MEET THE REQUIREMENTS OF VICROADS SECTION 290 - LIME STABILISATION OF EARTHWORKS MATERIALS.



NEW PAVEMENT TO STRUCTURAL/EXISTING PAVEMENT DETAIL

TRENCH BACK FILLING DETAIL UNDER LANDSCAPED AREAS

SCALE 1:20

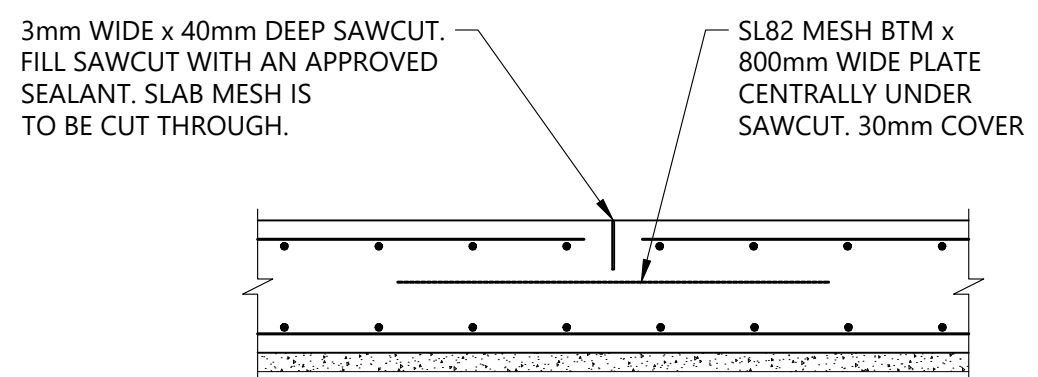


TYPICAL EXPANSION JOINT (E.J.) DETAIL

SCALE 1:20

TRENCH BACK FILLING DETAIL UNDER NEW ROAD/KERB/FOOTPATH AREAS

SCALE 1:20

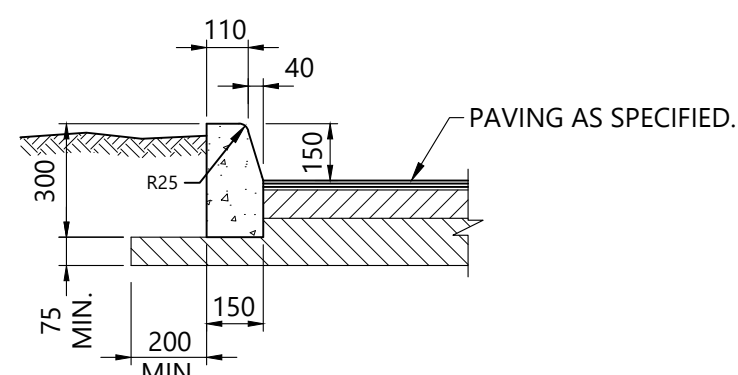


SAWCUT JOINT DETAIL (S.C.)

SCALE 1:20

SAWCUTS ARE TO BE PLACED BETWEEN 12 AND 24 HOURS AFTER COMPLETION OF POUR, DEPENDING ON CONCRETE CONDITIONS, REFER TO CEMENT AND CONCRETE ASSOCIATION "INDUSTRIAL FLOORS AND PAVEMENTS" MANUAL SECTION 8.2 "SAWN JOINTS" FOR FURTHER ADVICE.

THE TIMING OF SAWING IS CRITICAL, AND SHOULD COMMENCE AS EARLY AS POSSIBLE BEFORE RANDOM CRACKING CAN OCCUR, BUT AFTER THE CONCRETE HAS HARDENED SUFFICIENTLY TO PREVENT RAVELLING OR TEARING OF THE SURFACE UNDER THE ACTION OF THE SAW.

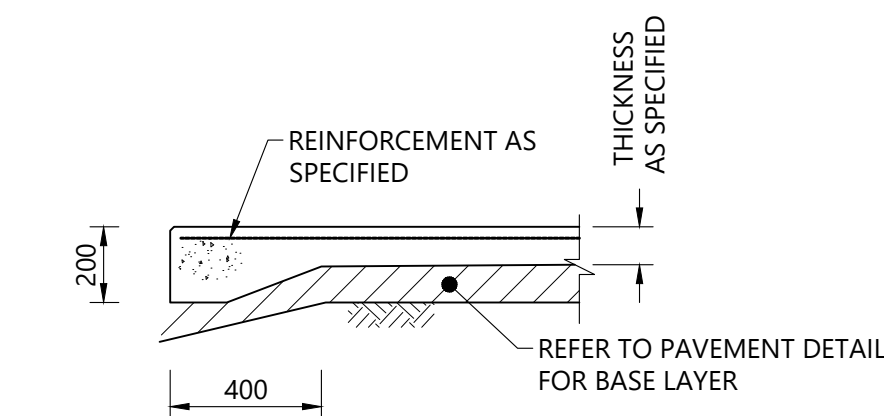


BARRIER KERB DETAIL

DENOTED AS 'BK' ON PLAN
REFER ALSO TO THE LOCAL COUNCIL STANDARD DETAILS.
ALLOW TO PROVIDE TOOLED JOINTS AT 1500mm MAX. CTS.

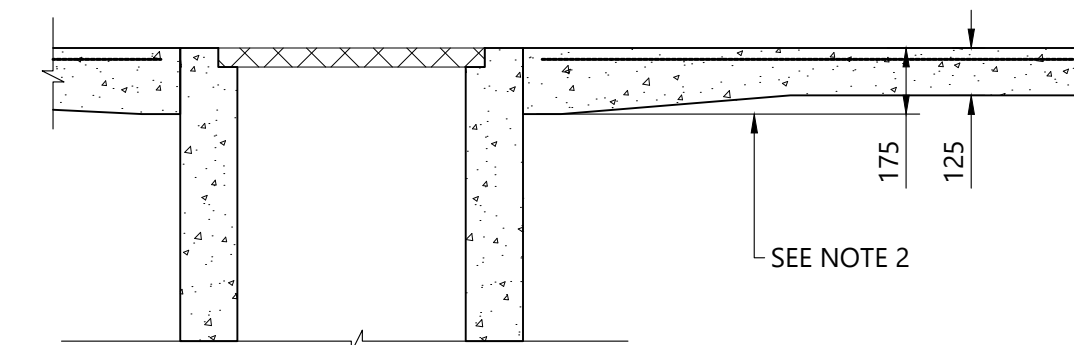
TIMBER EDGE STRIP (TE) DETAIL

SCALE 1:10



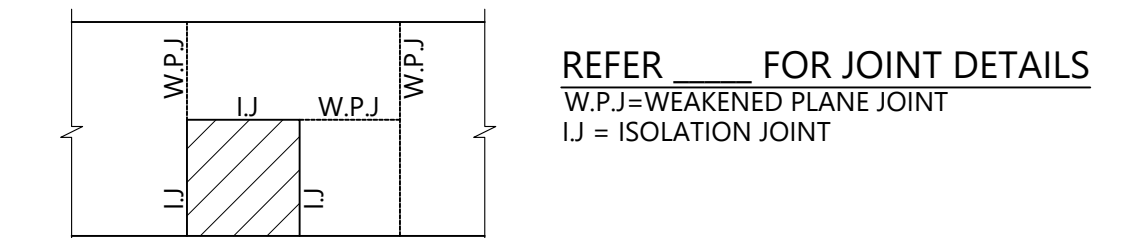
TYPICAL EDGE THICKENING DETAIL

SCALE 1:20



FOOTPATH THICKENING AROUND PITS

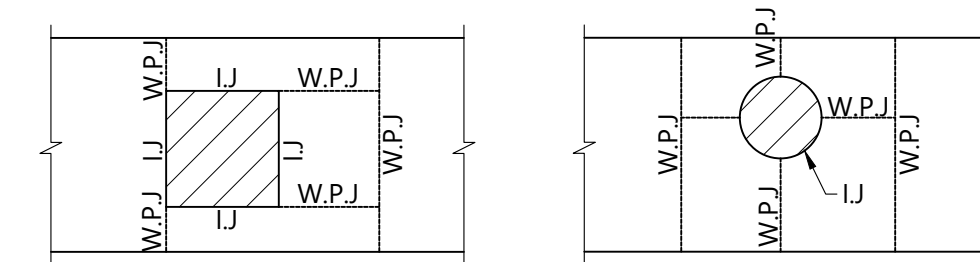
SCALE 1:20



PIT / ACCESS HOLE AT EDGE (PLAN)

SCALE 1:20

EDCM 402



PIT / ACCESS HOLE NOT AT EDGE (PLAN)

SCALE 1:20

EDCM 402

JOINT DETAIL FOR PITS WITHIN PATHS

SCALE 1:20

EDCM 402

NOTES

- FOR JOINT & CONCRETE DETAILS REFER _____
- FOOTPATH THICKENING AT PIT TO EXTEND FROM PIT TO NEW W.P.J OR 500 WHICH EVER IS THE GREATER
- ISOLATION JOINTS (I.J) ARE NOT REQUIRED AROUND TELECOM AND ELECTRICITY PITS

PIT NO	PIT TYPE	COVER CLASS	LENGTH	WIDTH	PIT COVER LEVEL	INLET IL	OUTLET IL	PIT DEPTH	COMMENT
1	JP	B	600	600	166.67	165.97	165.95	750	CONCRETE INFILL
2	GP	B	600	600	166.55	166.12	166.10	500	-
3	GP	B	600	600	166.59	-	166.06	550	HEEL SAFE COVER
4	GP	B	600	600	166.68	-	166.28	450	-
5	GP	B	600	600	166.53	-	166.12	450	HEEL SAFE COVER
6	GP	B	600	600	166.45	-	166.00	450	-
7	GP	B	600	600	166.52	165.82	165.80	750	HEEL SAFE COVER
8	GP	B	900	900	166.70	165.54	165.52	1200	HEEL SAFE COVER
9	JP	B	600	600	166.64	-	165.80	850	CONCRETE COVER
10	GP	D	600	600	166.50	-	165.85	700	HEEL SAFE COVER
11	GP	D	600	600	166.40	165.57	165.55	850	HEEL SAFE COVER
12	GP	D	900	900	166.35	165.27	165.25	1100	HEEL SAFE COVER
13	GP	D	600	600	166.40	-	165.65	750	HEEL SAFE COVER
14	GP	D	600	600	166.05	165.25	165.23	850	HEEL SAFE COVER
15	GP	D	600	600	166.05	165.26	165.24	850	HEEL SAFE COVER
16	GP	D	600	600	166.00	-	165.45	600	HEEL SAFE COVER
17	GP	B	600	600	166.63	165.86	165.84	800	-
18	GP	B	600	600	166.63	166.01	165.99	650	-
19	GP	B	600	600	166.63	-	166.10	550	-
20	JP	D	1200	1200	166.46	165.19	165.17	1300	CONCRETE INFILL
21	JP	D	900	900	166.28	165.05	165.03	1250	CONCRETE INFILL

3891-C200-ROAD AND DRAINAGE DETAILS.dwg - C200-19 August 2024 - 5:08 PM - Ben Naley - Miglic Macleod

Issue	Description	Drwn	Ckd	Appd	Date
T1	TENDER ISSUE				A.M. A.M. A.M. 19.08.2029
PT1	PRELIMINARY ISSUE				A.M. A.M. A.M. 06.08.2024
P3	PRELIMINARY ISSUE				A.M. A.M. A.M. 28.06.2024
P2	PRELIMINARY ISSUE				A.M. A.M. A.M. 17.06.2024
P1	PRELIMINARY ISSUE				A.M. A.M. A.M. 29.05.2024

THIS DOCUMENT IS SUBJECT TO COPYRIGHT AND PROPERTY OF MIGLIC MACLEOD. ANY UNAUTHORISED USE OR DISCLOSURE IS STRICTLY PROHIBITED

	THE SCOTS SCHOOL ALBURY JUNIOR SCHOOL PRECINCT 393 PERRY STREET ALBURY NSW, 2640	Designed by A.MAHDABI Drawn by A.MAHDABI Date MAY 2024	 Level 5, Suite 1, 390 St Kilda Road, Melbourne, VIC 3004 T 1300 30 40 79 W miglicmacleod.com.au
	CIVIL AND DRAINAGE DETAILS	Scale Status TENDER NOT FOR CONSTRUCTION	